

HIGH EFFICIENCY / HIGH AMBIENT /  
OPTIMIZED IPLU

FORM 201.21-EG1 (209)



BY JOHNSON CONTROLS

MODEL #: YCAV0157NA46WAACT XXXXL XXXX445 XXXXHXSA XXXX5 XXXXNJ XXXX

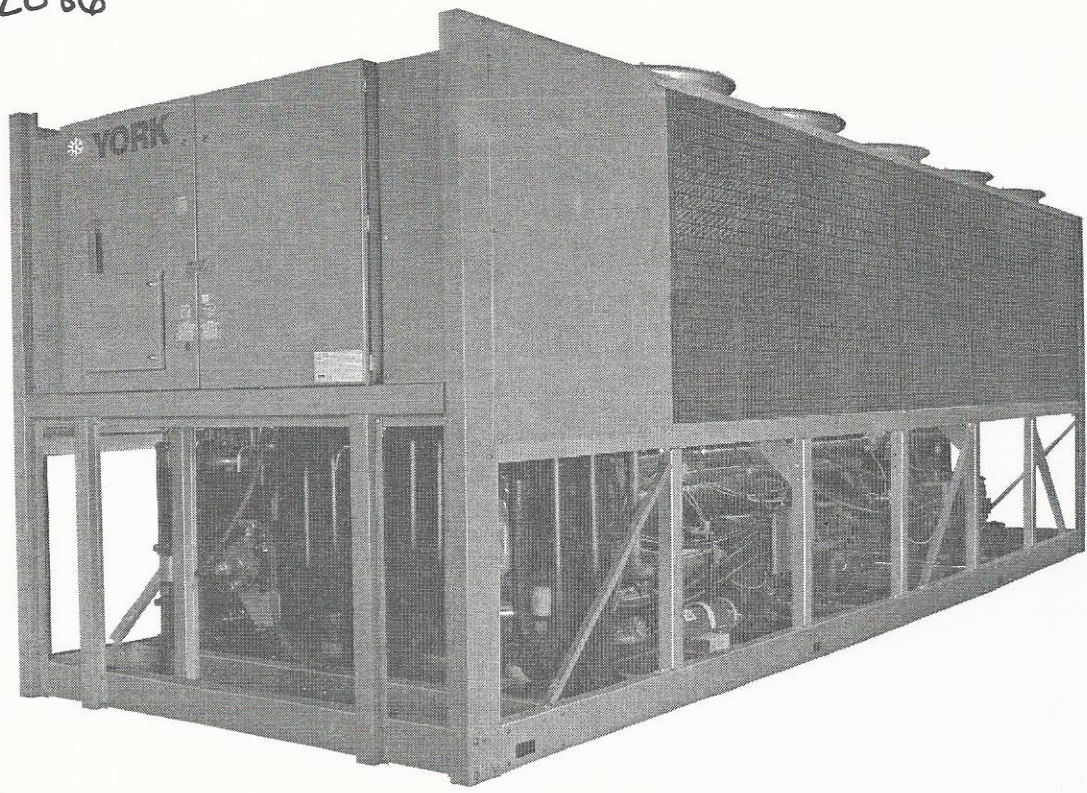
S/N: R6PM012086

YR: 2005

150 TONS

460-3-60

R-134A



**Model YCAV Air-Cooled Screw Compressor Liquid Chillers  
Style A**



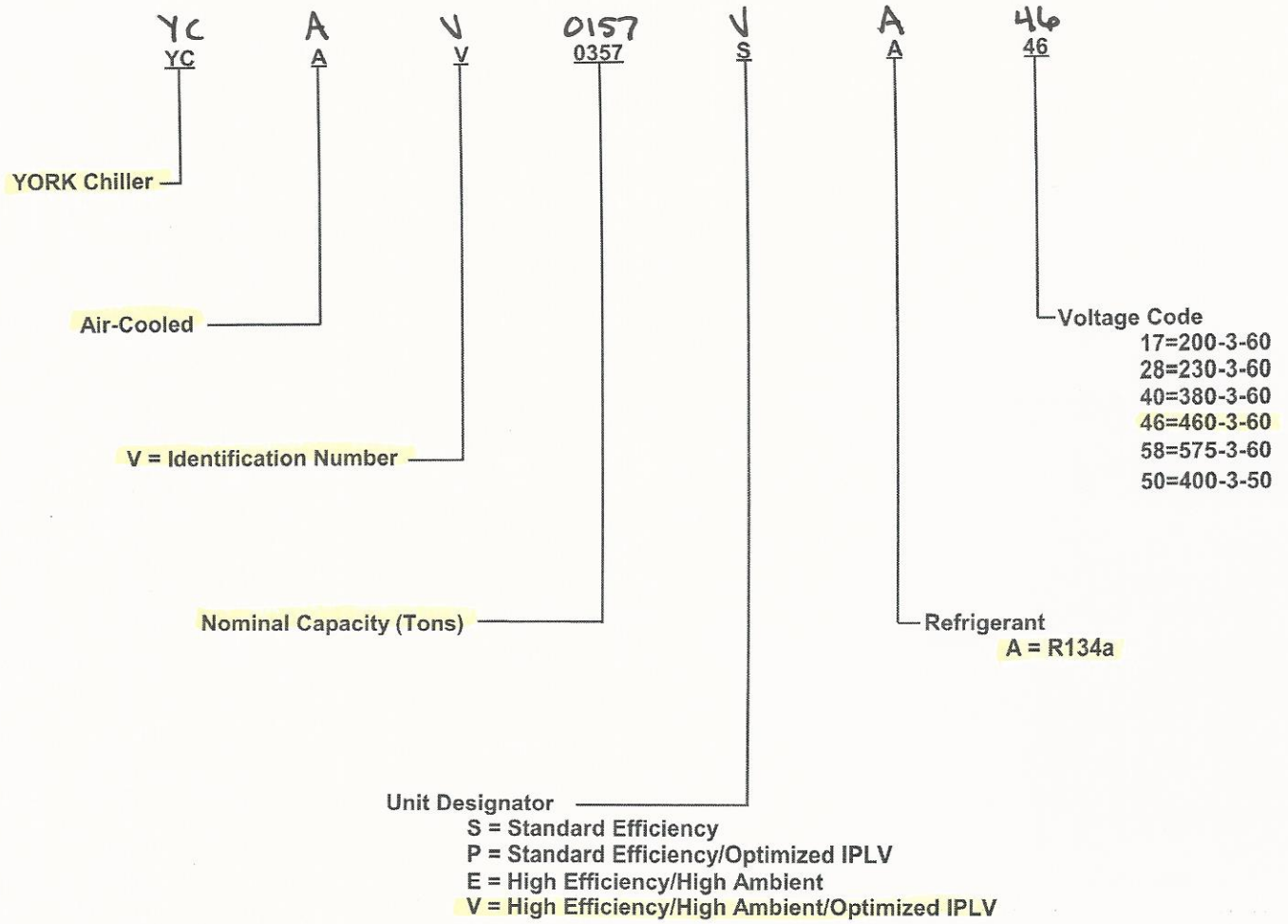
150 - 385 TONS & 385 - 515 TONS  
527 - 1354 kW & 1354 - 1804 kW  
60 Hz 50 & 60 Hz  
ASHRAE 90.1 Compliant



# Nomenclature

## NOMENCLATURE

The Model Number denotes the following characteristics of the unit:

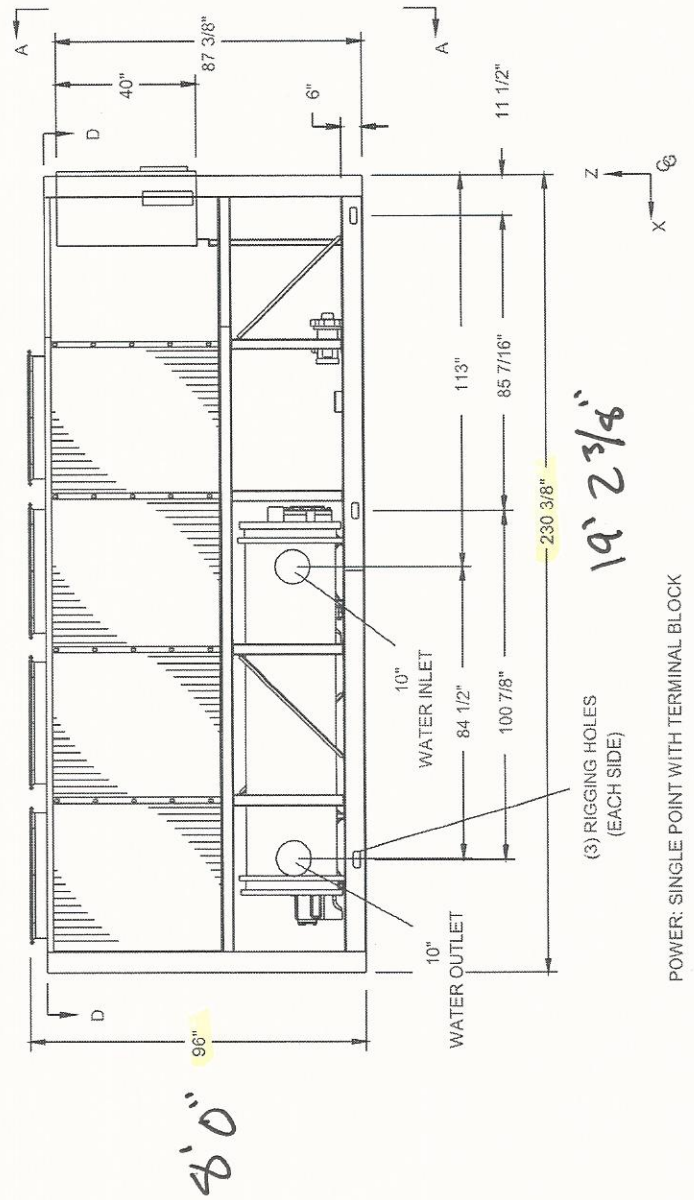
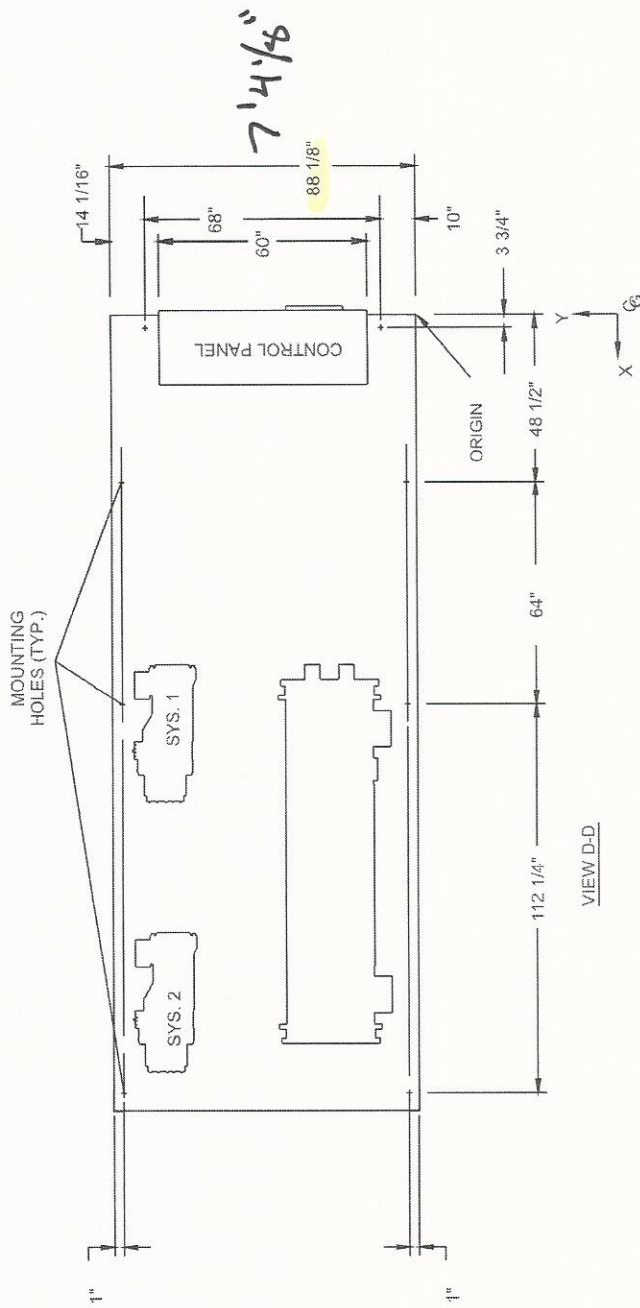


# Physical Data (English - High Efficiency)

Refrigerant R-134a	HIGH EFFICIENCY						
	MODEL NUMBER (YCAV						E/V)
	YCAV0157	YCAV0177	YCAV0187	YCAV0197	YCAV0207	YCAV0227	YCAV0247
<b>General Unit Data</b>							
Number of Independent Refrigerant Circuits	2	2	2	2	2	2	2
Refrigerant Charge, R-134a, Ckt.-1/Ckt.-2, lbs	170/170	185/170	185/185	192/192	225/192	225/225	230/230
Oil Charge, Ckt.-1/Ckt.-2, gal.	5/5	5/5	5/5	5/5	5/5	5/5	5/5
Compressors, Semi-hermetic Screw Qty per Chiller	2	2	2	2	2	2	2
<b>Condensers, High Efficiency Fin/Tube with Integral Subcooler</b>							
Total Chiller Coil Face Area, ft <sup>2</sup>	235	264	293	293	323	352	352
Number of Rows	3	3	3	3	3	3	3
Fins per Inch	17	17	17	17	17	17	17
<b>Condenser Fans</b>							
Number, Ckt.-1/Ckt.-2	4/4	5/4	5/5	5/5	6/5	6/6	6/6
<b>Low Sound Fans</b>							
Fan Motor, HP	2	2	2	2	2	2	2
Fan & Motor Speed, revs./min.	1140	1140	1140	1140	1140	1140	1140
Fan Diameter, inches	35.4	35.4	35.4	35.4	35.4	35.4	35.4
Fan Tip Speed, ft./min.	10575	10575	10575	10575	10575	10575	10575
Total Chiller Airflow, cfm	104000	117000	130000	130000	143000	156000	156000
<b>Ultra Quiet Fans</b>							
Fan Motor, HP	2	2	2	2	2	2	2
Fan & Motor Speed, revs./min.	838	838	838	838	838	838	838
Fan Diameter, inches	35.4	35.4	35.4	35.4	35.4	35.4	35.4
Fan Tip Speed, ft./min.	7774	7774	7774	7774	7774	7774	7774
Total Chiller Airflow, cfm	104000	117000	130000	130000	143000	156000	156000
<b>Evaporator, Direct Expansion</b>							
Water Volume, gals.	95.0	95.0	95.0	110.0	110.0	110.0	140.0
Maximum Water Side Pressure, psig <sup>1</sup>	150	150	150	150	150	150	150
Maximum Refrigerant Side Pressure, psig	235	235	235	235	235	235	235
Minimum Chilled Water Flow Rate, gpm	160	160	160	180	180	180	180
Maximum Chilled Water Flow Rate, gpm	750	750	750	750	750	750	800
Water Connections, inches	10	10	10	10	10	10	10

<sup>1</sup> Optional 300 psig Waterside available

Contact your nearest Johnson Controls Sales Office for weight data.



Model/IPIN

YCAV0157VA46VAACSTXXXXLXXXX44SXXXXHXXSAXXXXX5XXXXXNJXXXX

SERIAL # RGP012086

Refrigerant

R-134a

Max. Allowable Pressure -Bar (psig):

High Side 350

Low Side 235

System Pressure Test On 1 AUG 2005 at High Side 350

OUTDOOR USE

Volt-Phase-Hertz

460-3PH-60HZ

Utilization Range

414-508V

Min. Circuit Ampacity (Amps)

270

Max. Dual Element Fuse Size (Amps)

450

Max. Circuit Breaker Size (Amps)

700

Short Circuit Withstand

65KA

Unit Power Supply:

Protection Device Size-Amps

Systems No. Min. Circuit Ampacity

1&2 ---

Max. Dual Element Fuse Size

---

SYS No.

1

Compressor

RLA

110

Fans

LRA

18

Refrigerant

Kg (lb)

77 (170)

3&4 ---

---

2

110

18

77 (170)



YORK INTERNATIONAL CORP. 029-24572-000 York, PA



REV. -

No.

1

Volts-Phase-Hertz

460V-1PH-60Hz

KVA

1.8

Unit Shipping Weight Kg (lb)

4974(10957)