



Product Catalog

Stealth™ Air-Cooled Chillers Model RTAE 150 to 300 Nominal Tons

Model # RTAE200

Serial # U15B01252

Year: 2015

Size: 200 Ton



Shipping Weight: 13,808 lbs.

Operating Weight: 14,007 lbs.

L: 28' 1"

W: 7' 5"

H: 8'



General Data

Table 1. General data table

Unit Size (tons)		150	165	180	200	225	250	275	300	150SC	165SC
Compressor Model		CHHSR	CHHSR	CHHSR	CHHSR	CHHSS	CHHSS	CHHSS	CHHSS	CHHSS	CHHSS
Quantity	#	2	2	2	2	2	2	2	2	1	1
Evaporator											
Water Storage	(gal)	17.5	18.7	21.9	23.9	26.6	28.7	33.0	36.0	17.3	17.3
	(L)	66.1	70.9	82.8	90.5	100.6	108.8	125.0	136.1	65.6	65.6
2 Pass arrangement											
Minimum Flow	(gpm)	171	187	202	228	261	288	318	354	169	169
	(l/s)	10.8	11.8	12.7	14.4	16.5	18.2	20.1	22.3	10.7	10.7
Maximum Flow	(gpm)	626	684	742	835	957	1055	1165	1299	620	620
	(l/s)	39.5	43.1	46.8	52.7	60.4	66.5	73.5	81.9	39.1	39.1
3 Pass arrangement											
Minimum Flow	(gpm)	114	124	135	152	174	192	212	236	113	113
	(l/s)	7.2	7.8	8.5	9.6	11.0	12.1	13.4	14.9	7.1	7.1
Maximum Flow	(gpm)	417	456	495	557	638	703	777	866	414	414
	(l/s)	26.3	28.8	31.2	35.1	40.2	44.3	49.0	54.6	26.1	26.1
Condenser											
Qty of Coils		8	10	10	12	12	12	14	16	8	10
Coil Length	(in)	78.74	78.74	78.74	78.74	78.74	78.74	78.74	78.74	78.74	78.74
	(mm)	2000	2000	2000	2000	2000	2000	2000	2000	2000	2000
Coil Height	(in)	50	50	50	50	50	50	50	50	50	50
	(mm)	1270	1270	1270	1270	1270	1270	1270	1270	1270	1270
Fins/Ft		192	192	192	192	192	192	192	192	192	192
Rows		3	3	3	3	3	3	3	3	3	3
Condenser Fans											
Quantity	#	8	10	10	12	12	12	14	16	8	10
Diameter	(in)	37.5	37.5	37.5	37.5	37.5	37.5	37.5	37.5	37.5	37.5
	(mm)	953	953	953	953	953	953	953	953	953	953
Total Airflow	(cfm)	107,392	134,240	134,240	161,088	161,088	161,088	187,936	214,784	107,392	132,240
	(m3/hr)	182,460	228,075	228,075	273,690	273,690	273,690	319,305	364,920	182,460	228,075
Tip Speed	(ft/min)	8700	8700	8700	8700	8700	8700	8700	8700	8700	8700
	(M/S)	44.2	44.2	44.2	44.2	44.2	44.2	44.2	44.2	44.2	44.2
Ambient Temperature Range											
Standard Ambient	°F (°C)	32 to 105 (0 to 40.6)									
Low Ambient	°F (°C)	0 to 105 (-17.7 to 40.6)									
Extreme Low Ambient	°F (°C)	-20 to 105 (-28.9 to 40.6)									
High Ambient	°F (°C)	32 to 125 (0 to 52)									
Wide Ambient	°F (°C)	0 to 125 (-17.7 to 52)									
General Unit											
Refrigerant		HFC-134a									HFC-134a
Refrigerant Ckts	#	2									1
Minimum Load	%	20	18	17	15	20	18	16	15	30	27
Refrigerant Charge/ckt	(lbs)	172	181	210	218	265	261	318	325	322	346
	(kg)	78	82	95	99	120	118	144	148	146	157
Oil		Trane OIL00311									
Oil Charge/ckt	(gal)	3.0	3.0	3.0	3.0	4.0	4.0	4.0	4.0	4.0	4.0
	(L)	11.4	11.4	11.4	11.4	15.1	15.1	15.1	15.1	15.1	15.1

Table 2. Drive cooling

	Unit Size (tons)							
	Standard Length Unit				Extended Length Units ^(a)			
	150S - 165S	150	165-250	275-300	150S - 165S	150	165-250	275-300
Drive Cooling Fluid Type	Trane Heat Transfer Fluid CHM01023							
Fluid Volume (gal)								
Ckt 1	1.28	1.14	1.23	1.32	1.37	1.30	1.32	1.41
Ckt2	n/a	1.32	1.67	1.81	n/a	1.67	1.81	1.95
Total	1.28	2.46	2.89	3.12	1.37	2.97	3.12	3.36
Fluid Volume (l)								
Ckt1	4.86	4.30	4.64	4.98	5.20	4.93	4.98	5.33
Ckt2	n/a	5.01	6.31	6.84	n/a	6.31	6.84	7.38
Total	4.86	9.31	10.95	11.83	5.20	11.23	11.83	12.71

(a) Units are extended length if either of the following are selected:
 Transformer (model number digit 28 = 1)
 Harmonic Filtration Option (model number digit 29 = 1)
 Units without Harmonic Filtration Option or Transformer (digits 28, 29 = 0X) are standard length.



Dimensions and Weights

Unit Length

Units are EXTENDED length if either of the following are selected:

- Transformer: Model number digit 28 = 1
- Harmonic Filtration Option: Model number digit 29 = 1

Units without Harmonic Filtration Option or Transformer (digits 28, 29 = 0X) are STANDARD length.

Weights

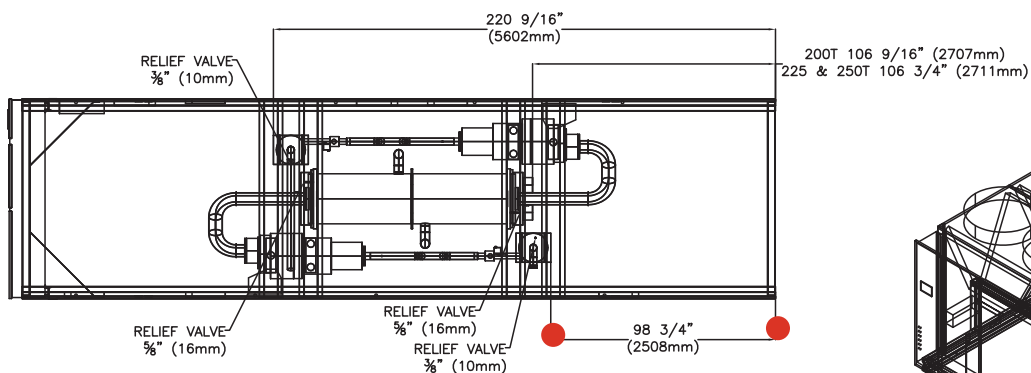
Table 7. Weights

Unit Size (tons)	Standard Length Unit				Extended Length Unit ^(a)			
	Shipping		Operating		Shipping		Operating	
	lbs	kg	lbs	kg	lbs	kg	lbs	kg
InvisiSound™ Standard or Superior^(b)								
150S	9436	4280	9596	4353	11013	4995	11173	5068
165S	10451	4741	10611	4813	12011	5448	12171	5521
150	11333	5141	11479	5207	13492	6120	13638	6186
165	12377	5614	12533	5685	14532	6592	14688	6662
180	12698	5760	12880	5843	14853	6737	15035	6820
200	13808	6263	14007	6354	15991	7254	16213	7354
225	15244	6915	15466	7015	17427	7905	17649	8005
250	15622	7086	15861	7195	17805	8076	18044	8185
275	16820	7630	17095	7754	18975	8607	19250	8732
300	17965	8149	18265	8285	20121	9127	20421	9263
InvisiSound Ultimate^(c)								
150S	10236	4643	10396	4716	11813	5358	11973	5431
165S	11251	5103	11411	5176	12811	5811	12971	5884
150	12133	5504	12279	5570	14292	6483	14438	6549
165	13177	5977	13333	6048	15332	6955	15488	7025
180	13498	6123	13680	6205	15653	7100	15835	7183
200	14608	6626	14807	6716	16791	7616	17013	7717
225	16044	7278	16266	7378	18227	8268	18449	8368
250	16422	7449	16661	7557	18605	8439	18844	8548
275	17620	7992	17895	8117	19775	8970	20050	9095
300	18765	8512	19065	8648	20921	9490	21221	9626

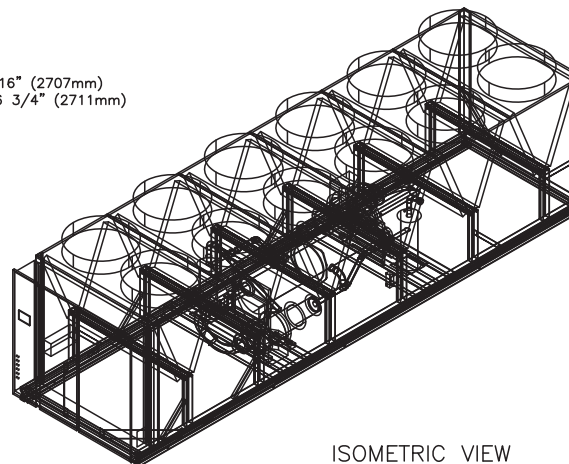
(a) Units are extended length if either of the following are selected:
 Transformer (model number digit 28 = 1)
 Harmonic Filtration Option (model number digit 29 = 1)
 Units without Harmonic Filtration Option or Transformer (digits 28, 29 = 0X) are standard length.
 (b) Model number digit 12 = 1 or 2
 (c) Model number digit 12 = 3

Figure 18. 200-250 ton

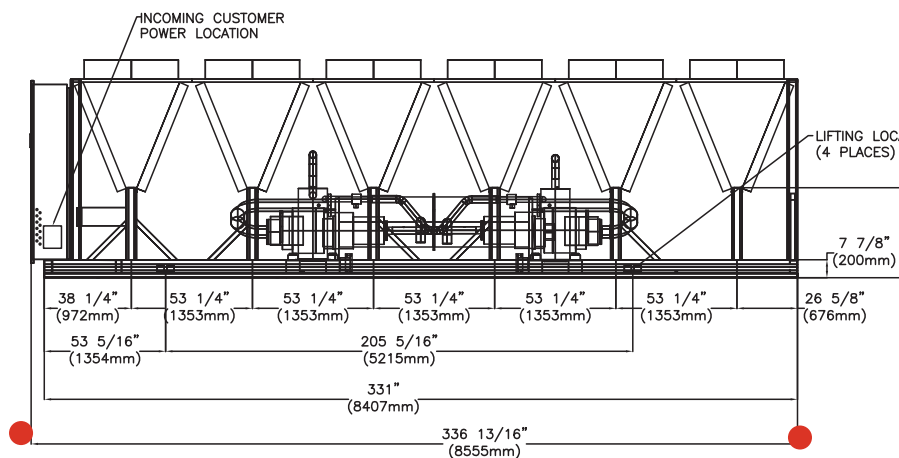
200, 225 & 250T STANDARD LENGTH UNIT
 2 PASS WATER CONNECTION = 6" (150mm)



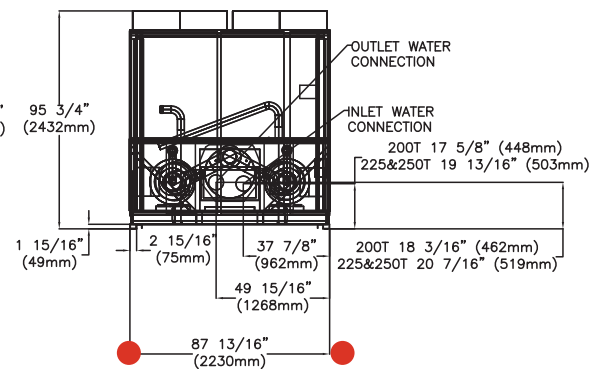
TOP VIEW
 (CONDENSER REMOVED FOR CLARITY)



ISOMETRIC VIEW



RIGHT SIDE VIEW



END VIEW
 (NONE CONTROL PANEL END)

Dimensions and Weights

Figure 27. 200 - 250 ton with harmonic filtration option – right side view

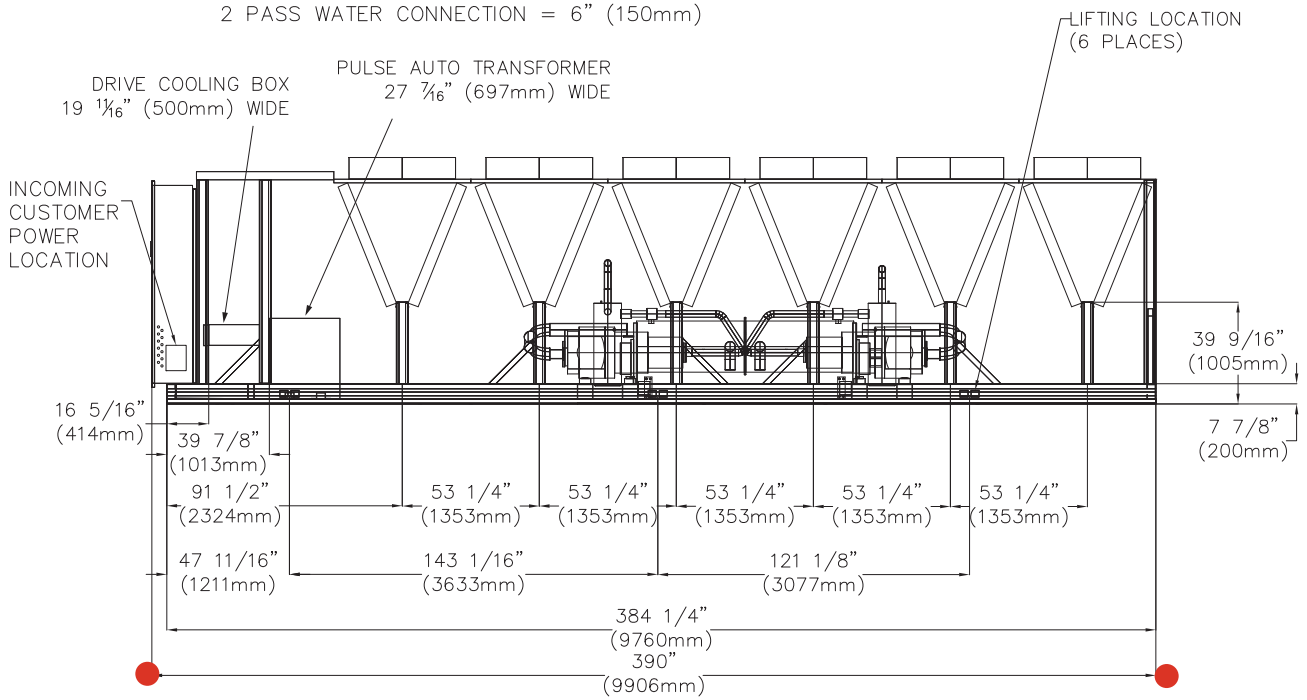
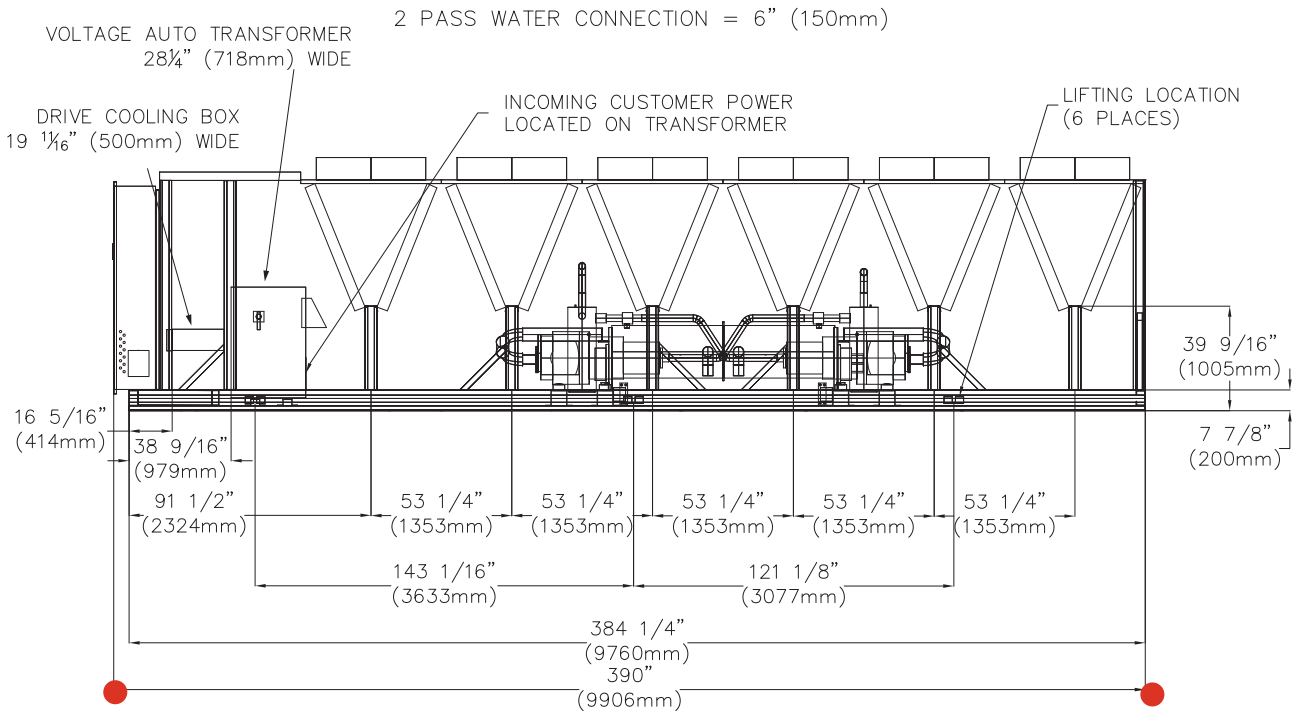
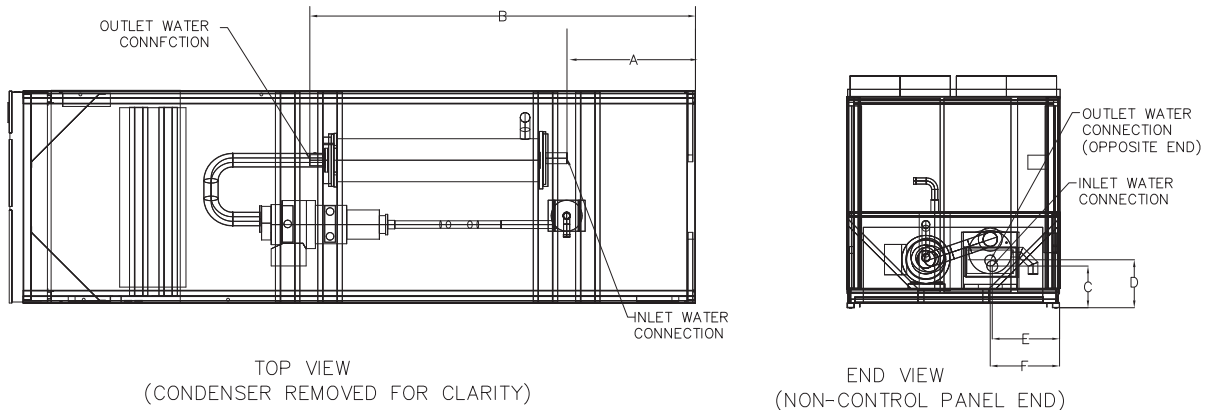


Figure 28. 200 - 250 ton with transformer option (200, 230 or 575V) – right side view



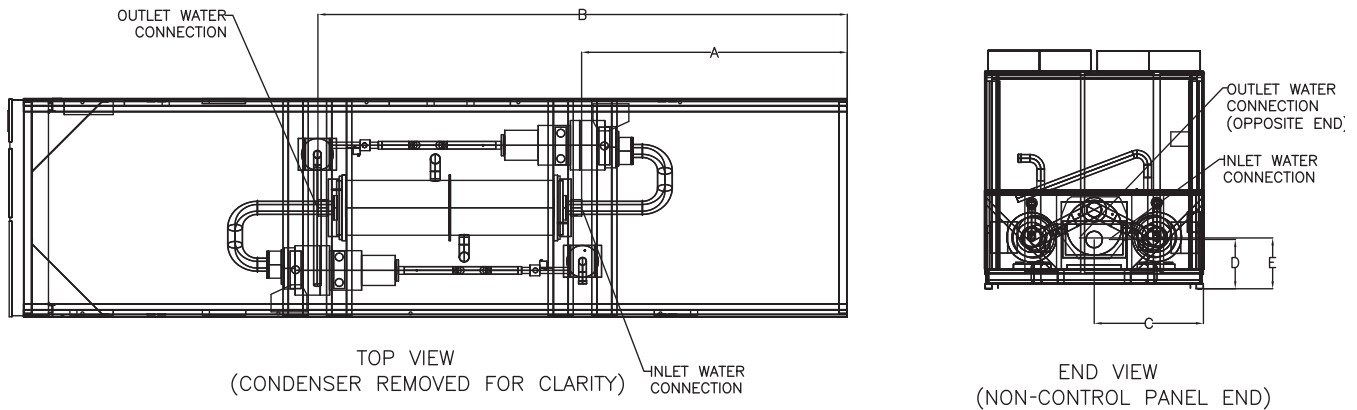
3-Pass Evaporator Dimensions

Figure 33. 3 pass evaporator^(a) — single circuit units



(a) See Table 8 for corresponding dimension values.

Figure 34. 3 pass evaporator^(a) — dual circuit units



(a) See Table 8 for corresponding dimension values.

Table 8. 3-pass evaporator dimensions^(a)

Dim	Unit size (tons)															
	150S		165S		150, 165		180		200		225, 250		275		300	
	in	mm	in	mm	in	mm	in	mm	in	mm	in	mm	in	mm	in	mm
A	15.0625	1348	106.3125	200	53.25	1353	51.50	1308	104.63	2657	104.81	2662	104.56	2656	157.75	4007
B	159.375	4048	212.625	5401	159.44	4050	160.38	4074	213.50	5423	213.69	5428	213.63	5426	266.19	6761
C	17.25	438	17.25	438	44.00	1118	44.00	1118	44.00	1118	44.00	1118	44.00	1118	44.00	1118
D	19.5	495	19.5	495	17.69	449	15.38	391	15.38	391	17.56	446	16.06	408	16.06	408
E	27.8125	706	27.8125	706	20.44	519	19.56	497	19.56	497	21.81	554	20.56	522	20.56	522
F	28.625	727	28.625	727	-	-	-	-	-	-	-	-	-	-	-	-
Water Conn	4	100	4	100	4	100	5	125	5	125	5	125	6	150	6	150

(a) See Figure 33 and Figure 34 for corresponding unit graphics.