

NC[®] 8400 steel

COOLING TOWER

Model #: NC8402GG-14
Serial #: 10087173-A1

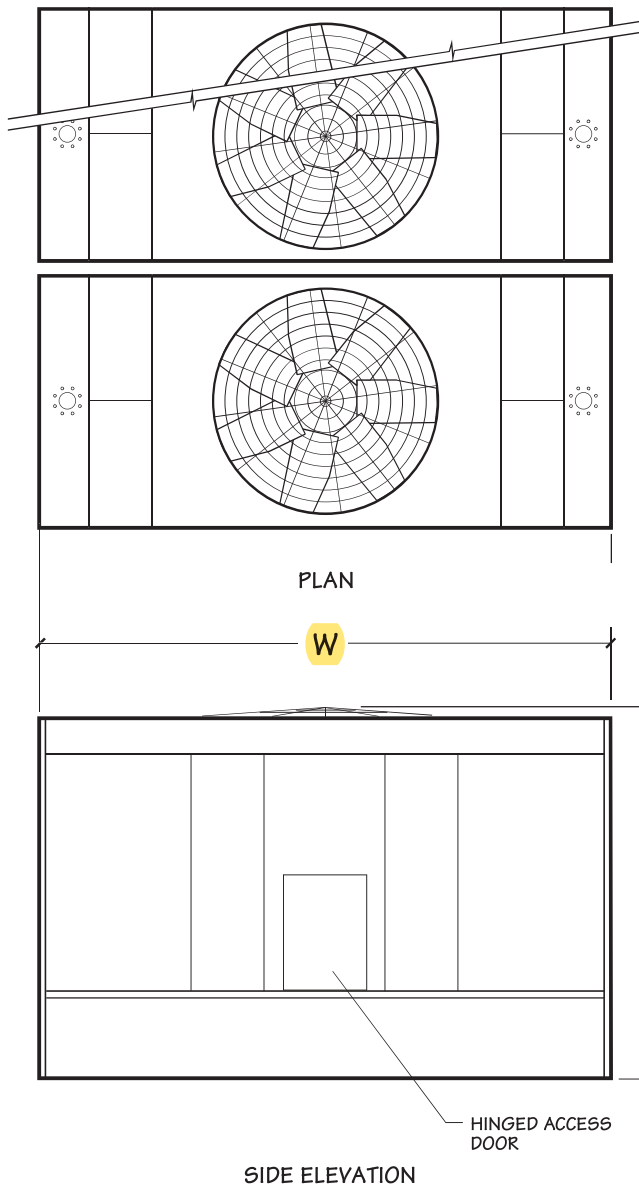
Year: 2014
Size: 200 Tons



Shipping Weight: 4,890 lbs
Operating Weight: 10,319 lbs

L: 14' 2"
W: 8' 5"
H: 10' 3"

NC8401 NC8402 NC8403 NC8405



Use this data for preliminary layouts only. Obtain current drawing from your Marley sales representative.

UPDATE™ web-based selection software, available at spxcooling.com/update provides NC model recommendations based on customer's specific design requirements.

A Sound dBA Approach

Various low sound options are available from 2 to 19 dB reduction from the standard dBA options in the schematic data table. Consult *UPDATE* selection software for performance, sound levels and dimensions.

NC8401 NC8402 NC8403 NC8405

Model note 2	Nominal Tons note 3	Motor hp	dBA 5'-0" from air inlet face	Design Operating Weight lb	Shipping Weight lb	Dimensions			
						L	W	H	A
NC8401G-1	101	2	63	7889	4062	6'-6 1/4"	12'-10"	10'-2 1/2"	6'-9 3/4"
NC8401H-1	117	3	65						
NC8401K-1	139	5	71						
NC8401M-1	159	7.5	73						
NC8401N-1	175	10	76						
NC8401P-1	198	15	78						
NC8402G-1	131	2	64	10319	4890	8'-4 3/4"	14'-2"	10'-3"	8'-8 1/4"
NC8402H-1	148	3	65						
NC8402K-1	175	5	68						
NC8402M-1	205	7.5	74						
NC8402N-1	228	10	76						
NC8402P-1	256	15	79						
NC8402Q-1	277	20	81						
NC8403K-1	213	5	68						
NC8403M-1	243	7.5	72	15844	7442	8'-4 3/4"	18'-2"	11'-11 1/4"	8'-8 1/4"
NC8403N-1	275	10	76						
NC8403P-1	312	15	79						
NC8403Q-1	342	20	80						
NC8403R-1	366	25	81						
NC8403S-1	386	30	84						
NC8403T-1	423	40	85						
NC8405N-1	331	10	74						
NC8405P-1	377	15	76						
NC8405Q-1	412	20	78						
NC8405R-1	445	25	81						
NC8405S-1	472	30	84						
NC8405T-1	515	40	87						

NOTE

- 1 Use this bulletin for preliminary layouts only. Obtain current drawings from your Marley sales representative. All table data is per cell.
- 2 Last numeral of model number indicates number of cells. Change as appropriate for your selection.
- 3 Nominal tons are based upon 95°F HW, 85°F CW, 78°F WB and 3 GPM/ton. The UPDATE web-based selection software provides NC model recommendations based on specific design requirements.
- 4 Standard overflow is a 4" dia. standpipe in the collection basin floor. The standpipe removes for flush-out and draining. See page 18 for side overflow option.
- 5 Outlet sizes vary according to GPM and arrangement. See pages 18 and 19 for outlet sizes and details.
- 6 Makeup water connection may be 1" or 2" dia., depending upon tower heat load, water pressure, and desired connections. See page 13 for additional information.