

Model #: 15425R
Serial #: U014586501-02-03-04-05

Year: 2001
Size: 425 Tons



October 25, 2001

Baltimore Aircoil Company

Shipping Weight: 7,740 lbs
Operating Weight: 14,900 lbs

Series 1500 Cooling Tower Mechanical Specifications

L: 12' 2"
W: 11' 10"
H: 15' 7"

Stainless Steel Cold Water Basin & Hot Water Basin with Remaining Components Protected with the BALTIBOND® Corrosion Protection System

Project Name: Cook Park 48 Bldg 3/Bloomington, IN
Customer Name: Commercial Service of Bloomington Inc./Bloomington, IN
Purchase Order No.: 01-0265004
Engineer Name: Commercial Service/Bloomington, IN
Model Number: (5) 15425R
B.A.C. Serial No.: U014586501-02-03-04,05

Unit Type: Factory assembled, induced draft, crossflow cooling tower with vertical air discharge. The edges of the hot-dip galvanized steel components are given a protective coat of zinc-rich compound.

Thermal Performance: Thermal performance is certified by the Cooling Technology Institute in accordance with CTI Certification Standard STD-201.

Quality Assurance: Each unit is manufactured under closely-controlled conditions using standardized parts to ensure each unit is built precisely to the same high-quality design and construction standards. The design, manufacture, and business processes are ISO 9001 certified.

Cold Water Basin: Constructed of Type 304 stainless steel. Basin includes a depressed section with drain/clean-out connection.

Strainer: Type 304 stainless steel, large area, lift out, strainer screen has perforated openings sized smaller than the water distribution nozzle orifices. Strainer includes anti-vortexing baffle to prevent air entrainment.

Water Level Control: Water level control and strainer are omitted for remote sump application.

Casing: Casing is constructed entirely from heavy gauge, G-235 (Z700 metric) hot-dip galvanized steel panels protected by the BALTIBOND® Corrosion Protection System.

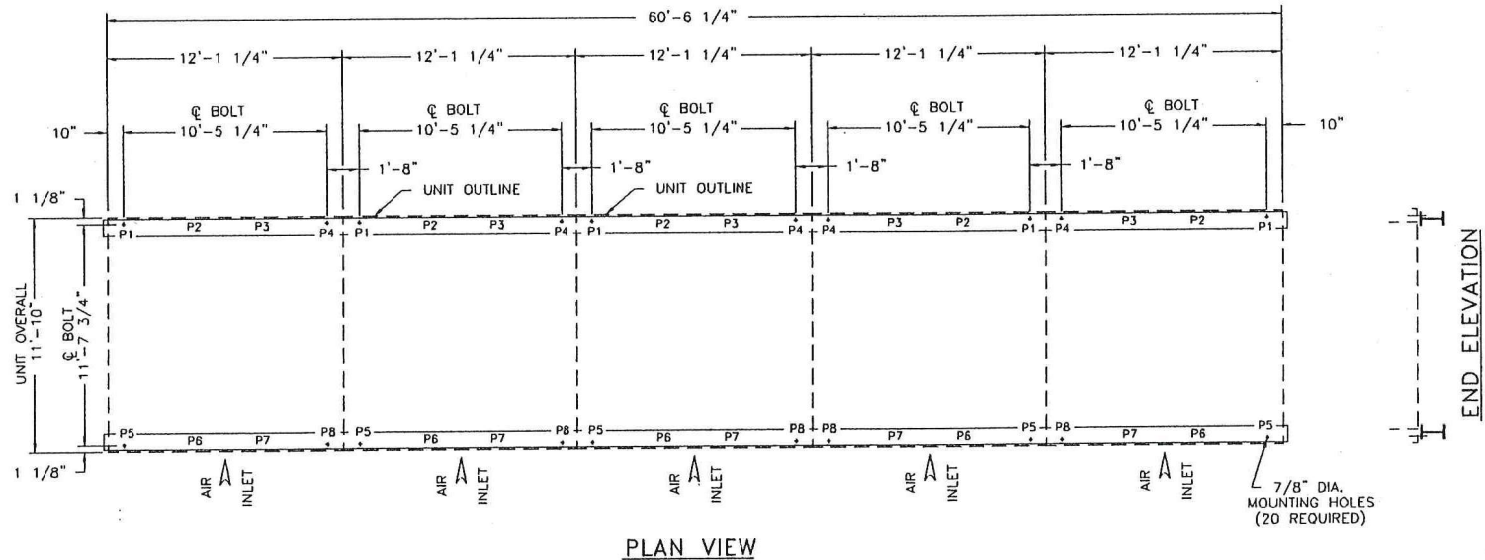
Access: Hinged 27" X 43" (686 mm X 1092 mm) access doors are provided on both end walls of the tower for access to the eliminators and fan plenum section. Access doors are constructed of heavy gauge, G-235 (Z700) hot-dip galvanized steel protected with the BALTIBOND® Corrosion Protection System.

Air Inlet Louvers: Air inlet louvers are wave-formed, fiberglass-reinforced polyester (FRP), spaced to minimize air resistance and prevent water splash-out.

MODEL NUMBER	SHIPPING WEIGHT	FLOW RATE (USGPM)		WEIGHT LOADING (LBS.)																	
		NOMINAL FLOW	MAXIMUM FLOW	⊙ NOMINAL FLOW								⊙ MAXIMUM FLOW									
				OPER. WEIGHT	P1	P2	P3	P4	P5	P6	P7	P8	OPER. WEIGHT	P1	P2	P3	P4	P5	P6	P7	P8
15296-5	33750	4440	7105	64600	1530	1320	1320	1530	3195	415	415	3195	77700	1845	1555	1555	1845	3825	545	545	3825
15325-5	34000	4375	7785	65800	1560	1340	1340	1560	3255	425	425	3255	77950	1855	1560	1560	1855	3835	545	545	3835
15350-5	34250	5250	8370	66900	1590	1365	1365	1590	3305	430	430	3305	78200	1855	1570	1570	1855	3850	545	545	3850
15368-5	34350	5520	8785	67750	1610	1380	1380	1610	3345	440	440	3345	78300	1860	1570	1570	1860	3855	545	545	3855
15310-5	35350	4650	7500	68200	1620	1395	1395	1620	3370	435	435	3370	85250	2025	1705	1705	2025	4190	605	605	4190
15340-5	35600	5100	8210	69600	1650	1425	1425	1650	3440	445	445	3440	85500	2035	1710	1710	2035	4200	605	605	4200
15365-5	35850	5475	8795	70850	1685	1445	1445	1685	3500	455	455	3500	85750	2040	1715	1715	2040	4215	605	605	4215
15385-5	36000	5775	9620	71800	1705	1465	1465	1705	3545	465	465	3545	85900	2045	1720	1720	2045	4290	605	605	4290
15425-5	37350	6375	10205	74500	1775	1525	1525	1775	3675	475	475	3675	87250	2075	1755	1755	2075	4290	605	605	4290

NOTES:

1. SUPPORTING STEELWORK AND ANCHOR BOLTS TO BE DESIGNED AND FURNISHED BY OTHERS.
2. ALL SUPPORTING STEEL MUST BE LEVEL AT TOP.
3. BEAMS SHOULD BE SELECTED IN ACCORDANCE WITH ACCEPTED STRUCTURAL PRACTICE, MAXIMUM DEFLECTION OF BEAM UNDER UNIT TO BE 1/360 OF SPAN, NOT TO EXCEED 1/2 INCH.
4. ALTERNATELY THE TOWER MAY BE SUPPORTED ON COLUMNS AT THE FOUR CORNERS OF EACH CELL. CONSULT YOUR BAC REPRESENTATIVE FOR DETAILS.
5. IF VIBRATION ISOLATION RAILS ARE USED BETWEEN TOWER AND SUPPORTING STEEL, BE CERTAIN TO ALLOW FOR THE LENGTH OF THE VIBRATION RAILS WHEN DETERMINING LENGTH OF SUPPORTING STEEL. VIBRATION RAIL LENGTH AND MOUNTING HOLE LOCATIONS MAY DIFFER FROM THOSE OF THE COOLING TOWER. REFER TO VIBRATION ISOLATOR DRAWINGS FOR THIS DATA.
6. OPERATING WEIGHT AND WEIGHT LOADING ARE FOR TOWER WITH WATER LEVEL IN PAN AT OVERFLOW.
7. FOR ACTUAL OPERATING WEIGHT INTERPOLATE BETWEEN FLOW RATES GIVEN.

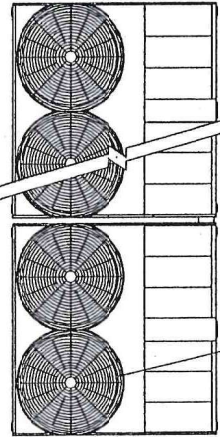


B.A.C. ORDER NO. 10145865-01,02,03,04,05 BALTIMORE AIRCOIL COMPANY
 DATE: 11/5/01

SERIES 1500 STANDARD STEEL SUPPORT
 DRAWING NUMBER: BAC-16584BX05

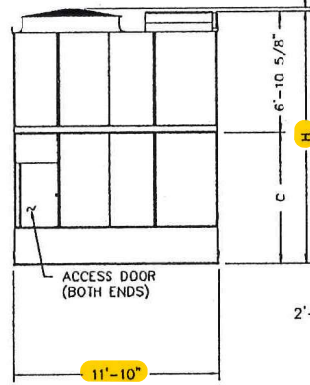
BAC-16581AX09

2001 © Baltimore Aircoil Company. All Rights Reserved.



PLAN VIEW

(8) 5'-6" DIAMETER FANS
(SEE NOTE 4)

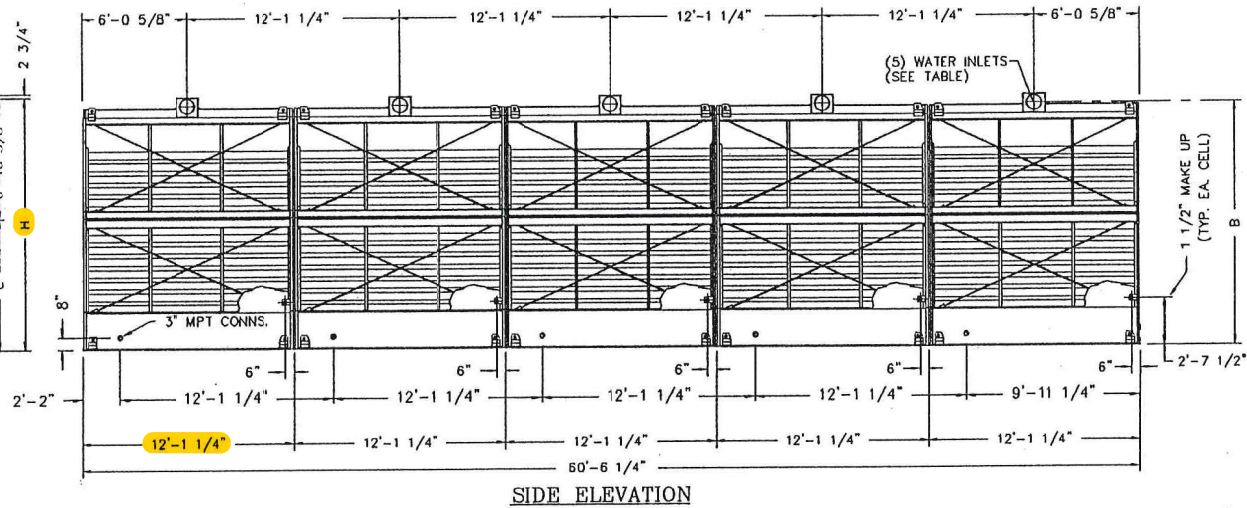


END ELEVATION
(CONNECTIONS SAME BOTH ENDS)

- NOTES:
1. CONNECTIONS 3" & SMALLER ARE MPT. CONNECTIONS 4" & LARGER ARE GROOVED TO SUIT A MECHANICAL COUPLING AND BEVELED FOR WELDING.
 2. ALL DIMENSIONS ARE IN FEET AND INCHES. WEIGHTS ARE IN POUNDS.
 3. FOR WEIGHT LOADING AND SUPPORT REQUIREMENTS REFER TO THE SUGGESTED STEEL SUPPORT DRAWING.
 4. THE AREA ABOVE THE DISCHARGE OF THE FAN MUST BE UNOBSTRUCTED.
 5. FOR ACTUAL OPERATING WEIGHT INTERPOLATE BETWEEN FLOW RATES GIVEN.

MODEL NUMBER	SHIPPING WEIGHT	FLOW RATE (USGPM)		OPER. WEIGHT ϕ		HEAVIEST SECTION (UPPER)	B	C	H
		NOMINAL FLOW	MAXIMUM FLOW	NOMINAL	MAXIMUM				
15296-5	33750	4440	7105	64600	77700	3540	13'-9 1/4"	7'-4 3/4"	14'-3 3/8"
15325-5	34000	4875	7785	65800	77950	3590	13'-9 1/4"	7'-4 3/4"	14'-3 3/8"
15350-5	34250	5250	8370	66900	78200	3640	13'-9 1/4"	7'-4 3/4"	14'-3 3/8"
15368-5	34350	5520	8785	67750	78300	3660	13'-9 1/4"	7'-4 3/4"	14'-3 3/8"
15310-5	35350	4650	7500	68200	85250	3540	15'-1 1/4"	8'-8 3/4"	15'-7 3/8"
15340-5	35600	5100	8210	69600	85500	3590	15'-1 1/4"	8'-8 3/4"	15'-7 3/8"
15365-5	35850	5475	8759	70850	85750	3640	15'-1 1/4"	8'-8 3/4"	15'-7 3/8"
15385-5	36000	5775	9260	71800	85900	3670	15'-1 1/4"	8'-8 3/4"	15'-7 3/8"
15425-5	37350	6375	10205	74500	87250	3940	15'-1 1/4"	8'-8 3/4"	15'-7 3/8"

WATER INLET SIZING	
FLOW RANGE PER CELL	WATER INLET SIZE
500-1350	8"
1351-2050	10"



SIDE ELEVATION

[FIVE CELL WITH BOTTOM OUTLET]

B.A.C. ORDER NO. 0145865-01,02,03,04,05



BALTIMORE AIRCOIL COMPANY

SERIES 1500 COOLING TOWER

DRAWING NUMBER: BAC-16581AX09

DATE: 11/5/01

A