

Model #: YCAL0066EE17XEASDTXHXXRLXXXX42XX1XXXXXXXXSXXXXXXXX1XXXXXXXXNB1XXXX
Serial #: 2FTM000995

2000
60 Ton

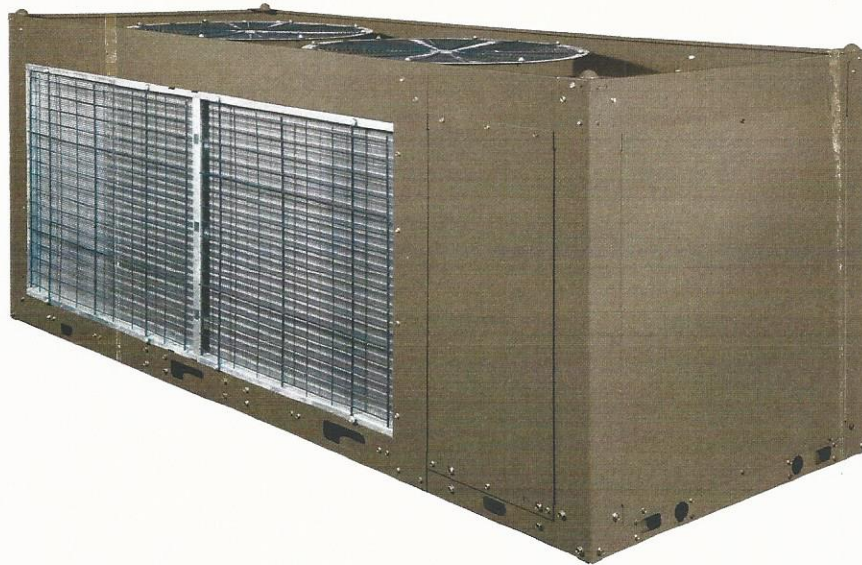
FORM 150.67-EG1 (713)



BY JOHNSON CONTROLS

L: 12' 10"
W: 7' 7"
H: 5' 3"

Shipping Weight: 4,097
Operating Weight: 4,142

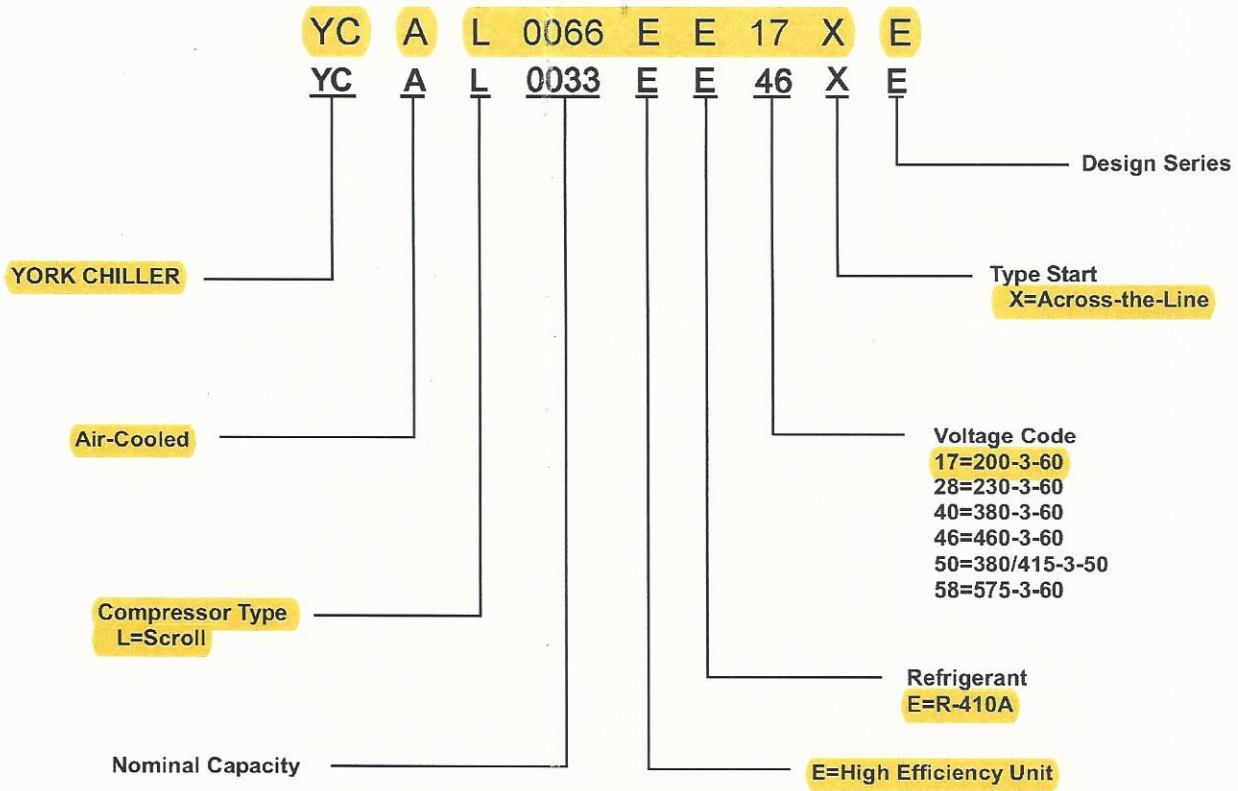


***Model YCAL Air-Cooled Scroll Compressor Liquid Chillers
Style E***

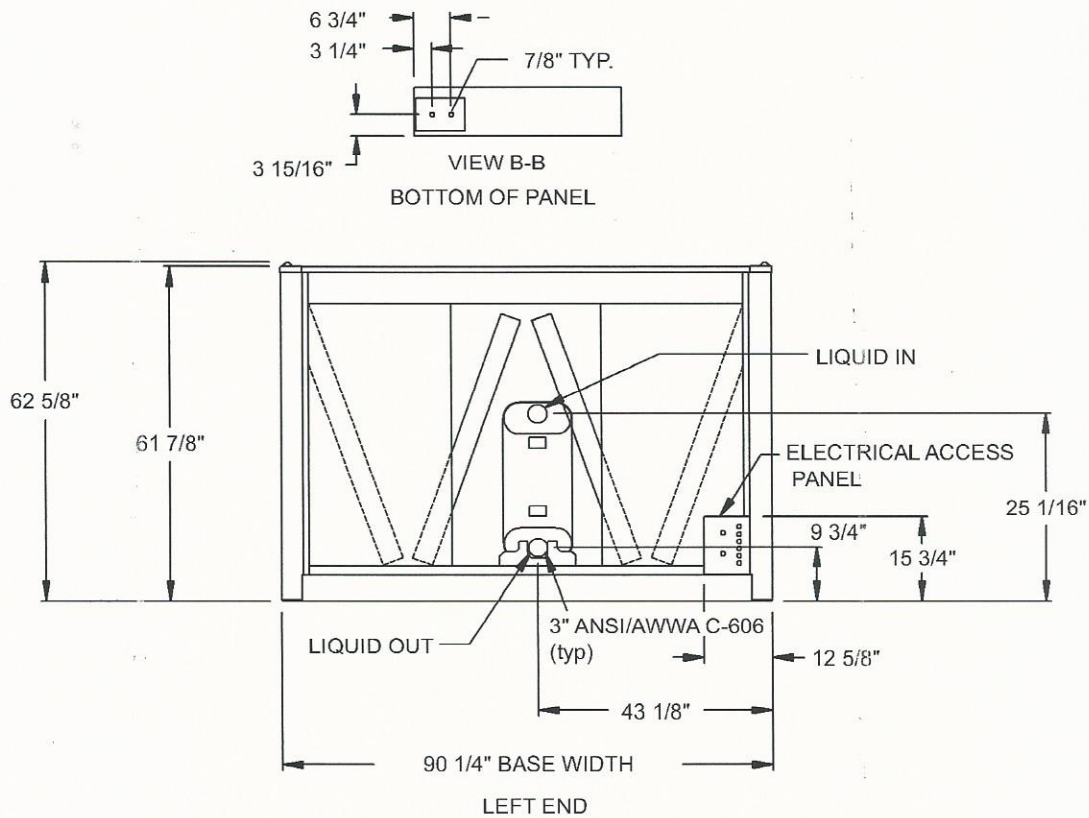
50 and 60Hz
15 – 65 TON
53 – 218 kW
R-410A



Unit Nomenclature

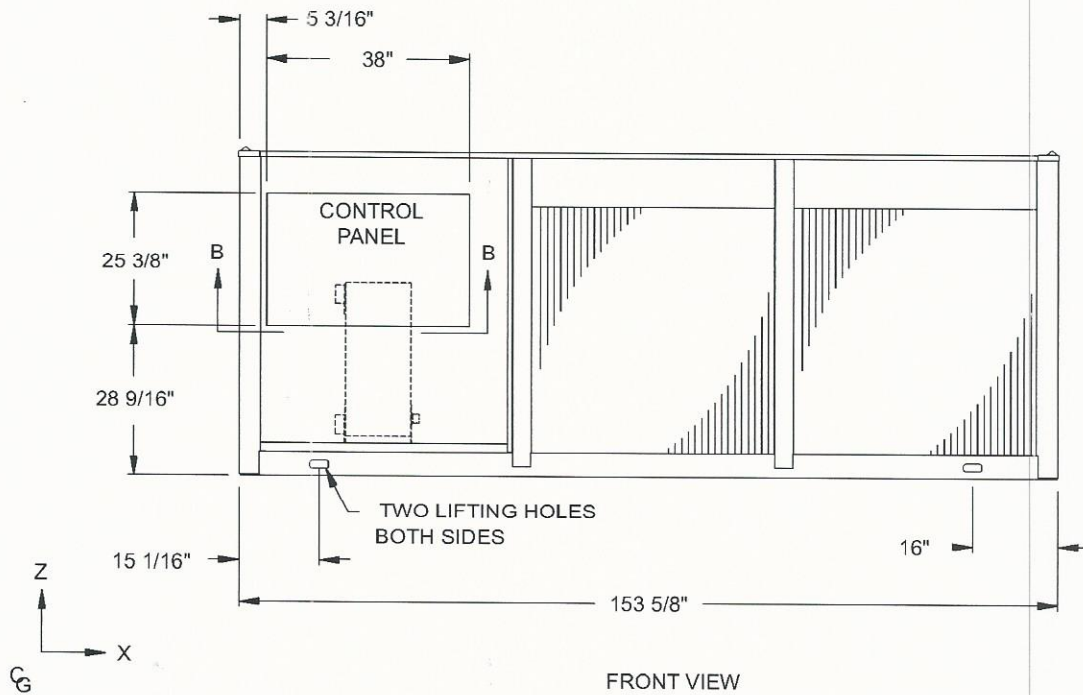
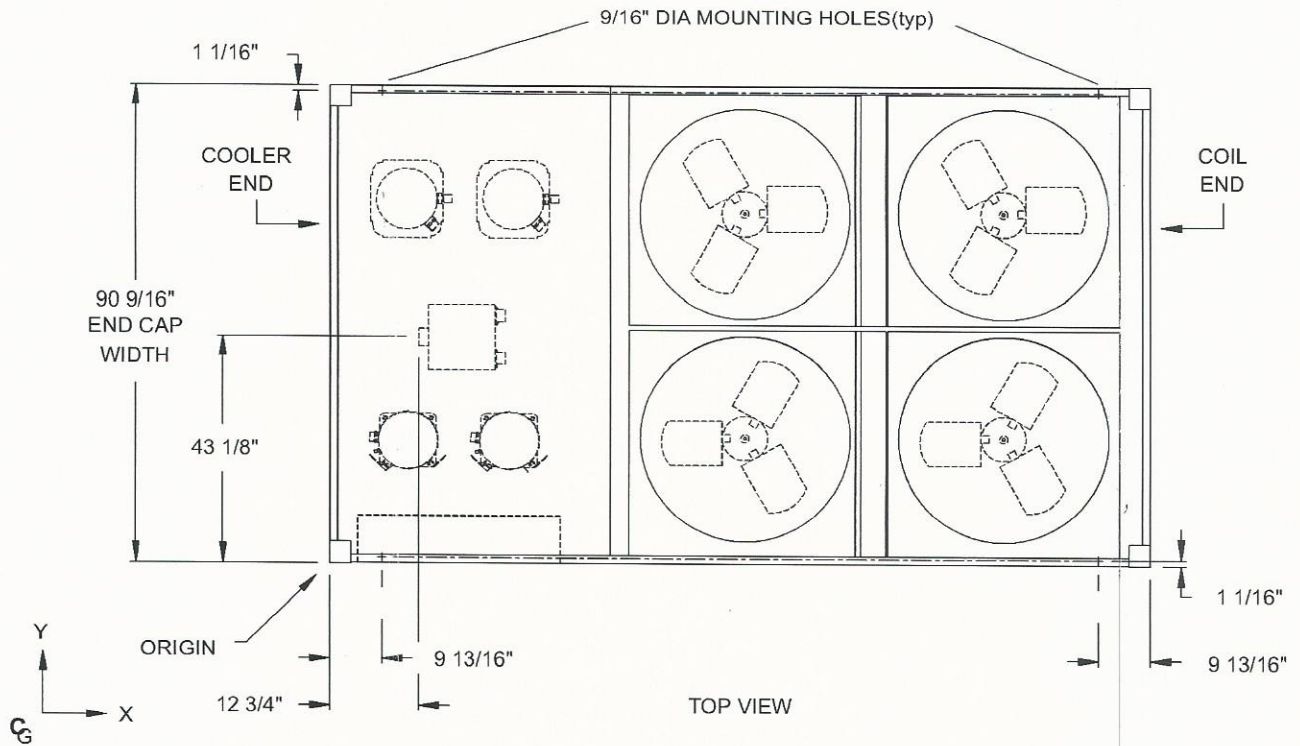


Dimensions - YCAL0066 (English)



NOTE:

Placement on a level surface of free of obstructions (including snow, for winter operation) or air circulation ensures rated performance, reliable operation, and ease of maintenance. Site restrictions may compromise minimum clearances indicated below, resulting in unpredictable airflow patterns and possible diminished performance. YORK's unit controls will optimize operation without nuisance high-pressure safety cutouts; however, the system designer must consider potential performance degradation. Recommended minimum clearances: front to wall - 6"; rear to wall - 6"; cooler end to wall - 4'0"; coil end to wall - 6"; top - no obstructions allowed; distance between adjacent units - 10'. No more than one adjacent wall may be higher than the unit. 1" nominal deflection isolators (not shown) will increase overall unit height by 6".



60Hz

Model YCAL00		19	22	28	33	43	46	52	56	66	
Length		109.8	109.8	118.6	118.6	144.8	144.8	148.8	148.8	153.6	
Width		44.7	44.7	44.7	44.7	90.6	90.6	90.6	90.6	90.6	
Height		46.1	46.1	50	50	47.8	47.8	62.6	62.6	62.6	
Nominal Tons		14.5	17.8	24.3	28	34.9	38	45.2	45.2	60.1	
Number of Refrigerant Circuits		1	1	1	1	2	2	2	2	2	
Refrig. Chg, Opt, R-410A (lbs) ckt1/ckt2		25	30	45	50	35/35	40/35	45/45	50/50	65/65	
Oil Charge, gallons ckt1/ckt2		1.8	1.8	1.7	2.2	1.8/1.8	1.8/1.8	1.7/1.7	1.7/1.7	2.3/2.2	
Shipping Weight	Alum. Fin Coils, lbs	1454	1567	1799	2034	2942	2968	3196	3208	4097	
	Copper Fin Coils, lbs	1597	1781	2005	2240	3300	3326	3673	3685	4703	
Operating Weight	Alum. Fin Coils, lbs	1481	1597	1829	2077	2967	3001	3233	3245	4142	
	Copper Fin Coils, lbs	1624	1811	2035	2283	3325	3359	3710	3722	4748	
Nominal Comp. Capacity	Comp. 1	8	10	15	15	10	12	13	15	20	
	Comp. 2	8	10	13	15	10	12	13	15	20	
	Comp. 3	-	-	-	-	-	-	-	-	-	
	Comp. 4	-	-	-	-	10	10	13	15	15	
	Comp. 5	-	-	-	-	10	10	13	15	15	
	Comp. 6	-	-	-	-	-	-	-	-	-	
Condenser	Total Face Area ft ²	34.7	34.7	43.5	43.5	87	87	116	116	128	
	Number of Rows Deep	Ckt. 1	2	3	3	3	2	2	3	3	3
		Ckt. 2	-	-	-	-	2	2	3	3	3
Fins per Inch		17	17	13	13	17	17	17	17	13	
Condenser Fans, Low Sound	Number of Fans	Ckt. 1	2	2	2	2	2	2	2	2	
		Ckt. 2	-	-	-	-	2	2	2	2	2
	Fan Power hp/fan		0.3	0.3	1.2	1.2	1.2	1.2	1.2	1.2	1.2
	Fan RPM		920	920	950	950	950	950	950	950	950
Total Chiller CFM		10833	10833	20000	20000	39500	39500	43333	43333	43333	
Condenser Fans, Ultra Quiet	Number of Fans	Ckt. 1	2	2	2	2	2	2	2	2	
		Ckt. 2	-	-	-	-	2	2	2	2	2
	Fan Power hp/fan		1.2	1.2	1.2	1.2	1.2	1.2	1.2	1.2	1.2
	Fan RPM		698	698	698	698	698	698	698	698	698
Total Chiller CFM		20000	20000	20000	20000	39500	39500	43333	43333	43333	
Evaporator	Water Volume Gallons		1.2	1.6	2.5	3.2	2.7	3.5	3.5	4.1	4.9
	Max Water Side Pressure PSIG		300	300	300	300	300	300	300	300	300
	Max Refrig Side Pressure PSIG		450	450	450	450	450	450	450	450	450
	Min. Chiller Water Flow GPM		10	10	10	10	40	40	60	60	60
	Max. Chiller Water Flow GPM		150	150	150	150	200	200	300	300	300
	Nom. Water Connections Size Inches		2	2	2	2	3	3	3	3	3