

Model #: YCWL0157HE17XAASDTXXXXLXXXX44SX1XEXXXXXSAXXXXXXXXXXXXXNBXAXXX
Serial #: SGAM-733700

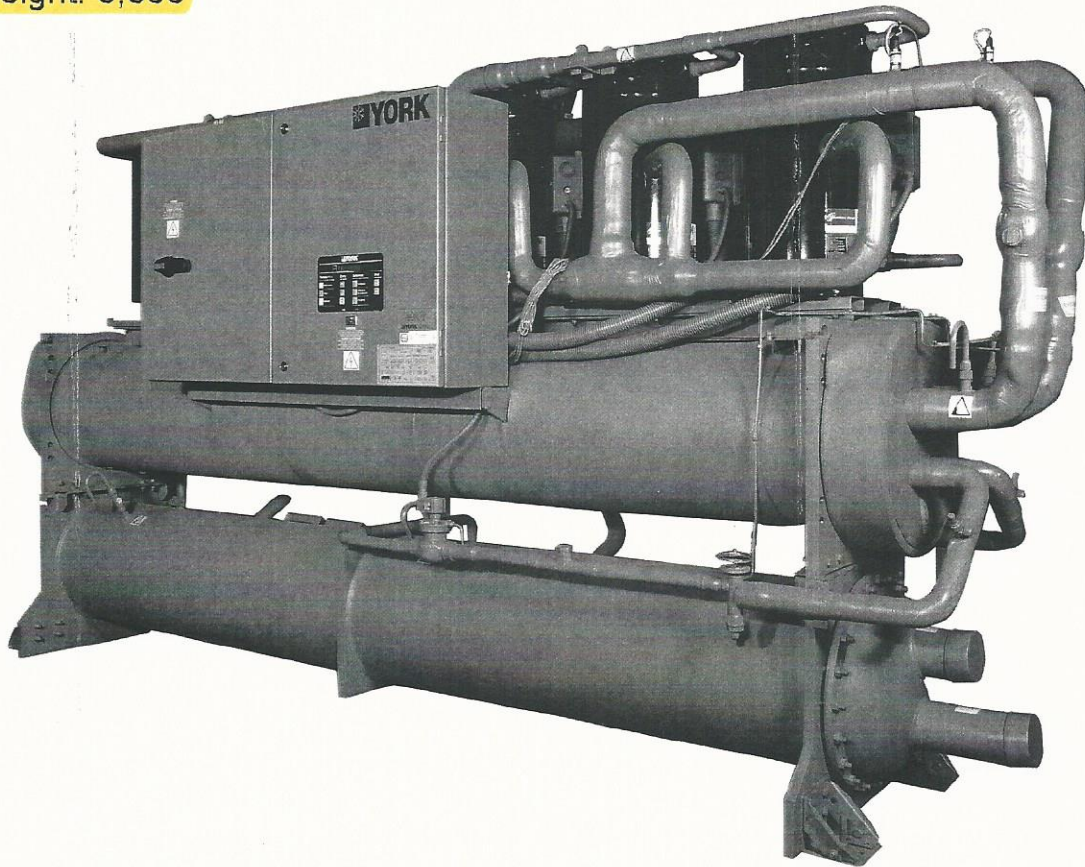
FORM 150.26-EG1 (611)



BY JOHNSON CONTROLS

L: 11' 6"
W: 2' 6"
H: 6' 5"

Shipping Weight: 7,889
Operating Weight: 8,833



**Model YCWL Water-Cooled Scroll Liquid Chiller
Style A**



**50 THROUGH 200 TONS
175kW THROUGH 700 kW
60Hz**



Products are produced at a facility whose quality-management systems are ISO9001 certified



Unit Dimensions - English - Four Compressor

STANDARD EFFICIENCY (SE)									
YCWL	0056SE	0064SE	0074SE	0084SE	0094SE	0104SE	0118SE	0132SE	0157SE
W	34 5/8	34 5/8	33 13/16	33 13/16	33 13/16	33 13/16	33 13/16	33 13/16	34 13/16
H	64 15/32	64 15/32	68 29/32	68 29/32	72 9/32	71 25/32	71 25/32	74 1/2	76 17/32
H*	-	-	70 1/2	70 1/2	-	73 1/2	73 1/2	-	-
H**	-	-	70 1/2	70 1/2	-	73 1/2	75	75	-
L	119 5/8	119 5/8	125 15/16	125 15/16	125 15/16	124 1/8	124 1/8	123 5/16	143 7/16
A	14 1/2	14 1/2	14 1/2	14 1/2	14 1/2	14 1/2	14 1/2	14 1/2	15
B	29	29	29	29	29	29	29	29	30
C	4 1/2	4 1/2	4 1/2	4 1/2	4 1/2	4 1/2	4 1/2	5 9/16	5 9/16
D	15 17/32	15 17/32	15 17/32	15 17/32	11 25/32	15 17/32	15 17/32	16 1/32	16 1/32
E	6 5/8	6 5/8	6 5/8	6 5/8	6 5/8	6 5/8	6 5/8	8 5/8	8 5/8
F	35 15/32	35 15/32	35 15/32	35 15/32	35 15/32	38 1/2	38 1/2	40	41
G	29	29	29	29	29	29	29	29	29
J	17 11/16	17 11/16	17 11/16	17 11/16	17 11/16	17 11/16	17 11/16	17 11/16	17 11/16
K	8 15/16	8 15/16	8 15/16	8 15/16	12 1/4	12 1/4	12 1/4	12 3/4	17 25/32
M	9 7/8	9 7/8	9 7/8	9 7/8	9 7/8	9 7/8	9 7/8	9 7/8	10 3/8
N	9 7/8	9 7/8	9 7/8	9 7/8	9 7/8	9 7/8	9 7/8	9 7/8	10 3/8
O	5 1/2	5 1/2	5 1/2	7 1/8	7 1/8	7 1/8	7 1/8	8 1/8	8 5/8
P	9 1/8	9 1/8	9 1/8	8 3/8	8 3/8	8 3/8	8 3/8	7 7/8	8 1/2
Q	5 1/8	5 1/8	5 1/8	5 1/8	5 1/8	5 1/8	5 1/8	5 7/32	5 3/16
R	84 1/2	84 1/2	84 1/2	84 1/2	85	85	85	83	102
S	8 21/32	8 21/32	8 21/32	8 21/32	8 13/32	8 13/32	8 13/32	9 13/32	11 29/32
T	101 13/16	101 13/16	101 13/16	101 13/16	101 13/16	101 13/16	101 13/16	101 13/16	125 13/16
U	15 1/16	15 1/16	21 3/8	21 3/8	21 3/8	19 9/16	19 9/16	18 3/4	14 7/8
V	107 25/32	107 25/32	107 25/32	107 25/32	107 25/32	107 25/32	107 25/32	108 7/32	132 23/32
X	30 3/8	30 3/8	30 3/8	30 3/8	32	32	32	33 1/4	36 1/4
AA	25 29/32	25 29/32	25 29/32	25 29/32	25 29/32	25 29/32	25 29/32	25 29/32	35 17/32
BB	50	50	50	50	50	50	50	50	50

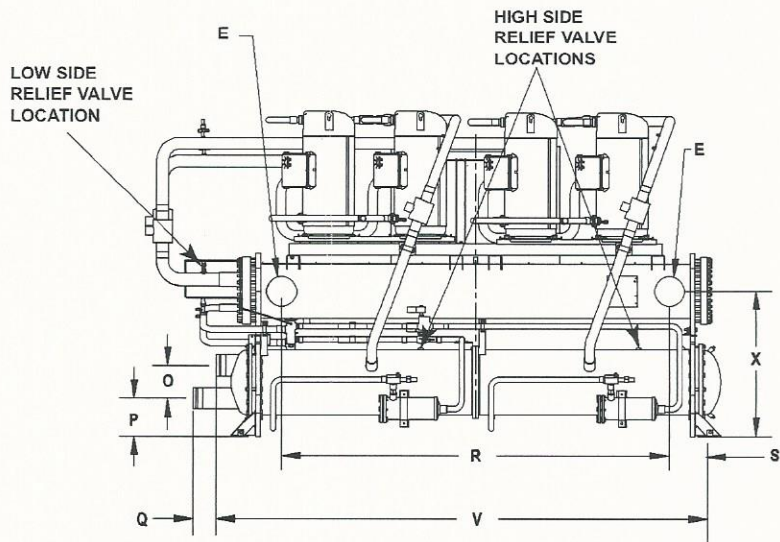
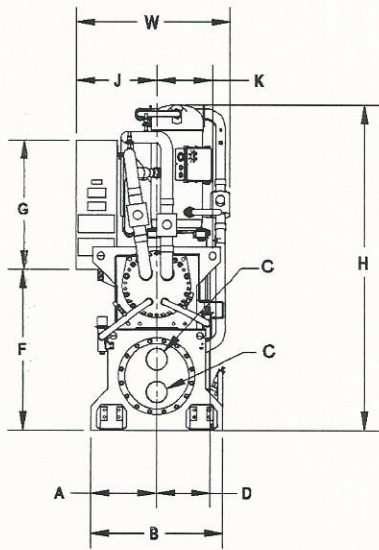
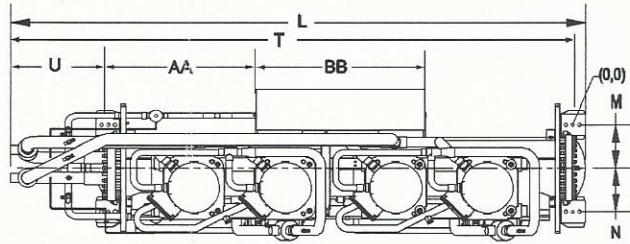
HIGH EFFICIENCY (HE)						
YCWL	0064HE	0074HE	0084HE	0094HE	0118HE	0157HE
W	33 13/16	33 13/16	33 13/16	33 27/32	33 27/32	34 13/16
H	67 19/32	74 5/8	74 19/32	76 19/32	76 1/2	77 9/32
H*	-	75	75	-	77	-
H**	-	75	75	-	77	76
L	124 3/8	123 5/16	125 11/16	121 3/4	123 5/16	143 7/16
A	14 1/2	14 1/2	14 1/2	15	15	15
B	29	29	29	30	30	30
C	4 1/2	4 1/2	4 1/2	5 9/16	5 9/16	5 9/16
D	11 25/32	16 1/32	16 1/32	16 1/32	16 1/32	16 1/32
E	6 5/8	8 5/8	8 5/8	8 5/8	8 5/8	8 5/8
F	35 15/32	40	40	42	42	41
G	29	29	29	29	29	29
J	17 11/16	17 11/16	17 11/16	17 11/16	17 11/16	17 11/16
K	12 1/4	12 3/4	12 3/4	12 3/4	12 3/4	17 25/32
M	9 7/8	9 7/8	9 7/8	9 7/8	9 7/8	10 3/8
N	9 7/8	9 7/8	9 7/8	9 7/8	9 7/8	10 3/8
O	7 1/8	7 1/8	7 1/8	8 5/8	8 5/8	8 5/8
P	8 1/4	8 1/4	8 1/4	8 1/2	8 1/2	8 1/2
Q	5 1/8	5 1/8	5 1/8	5 3/16	5 3/16	5 3/16
R	85	83	83	83	83	102
S	8 13/32	9 13/32	9 13/32	9 13/32	9 13/32	11 29/32
T	101 13/16	101 13/16	101 13/16	101 13/16	101 13/16	125 13/16
U	19 13/16	18 3/4	21 1/8	17 3/16	18 3/4	14 7/8
V	107 25/32	107 25/32	107 25/32	108 3/4	108 3/4	132 23/32
X	32	33 1/4	33 1/4	35 1/4	35 1/4	36 1/4
AA	25 29/32	28 9/32	25 29/32	27 15/32	25 29/32	37 21/32
BB	50	50	50	50	50	50

H* - for 200/230 volt units, which require a larger electrical enclosure.

H** - for multiple point circuit breaker units, 200/230 volt, which require a larger electrical enclosure.

NOTES:

1. Recommended service clearances.
 - Rear to wall: 20" (508mm)
 - Front to wall: 36" (915mm)
 - Top: 43" (1092mm)
 - Tube cleaning and removal: 132" (3353 mm) either end
2. Relief valve connection sizes.
 - Low side (suction line): 1/2" flare
 - High side (condenser): 5/8" NPT



High Efficiency (HE)

YCWL	0064HE	0074HE	0084HE	0094HE	0096HE	0118HE	0126HE	0127HE	0156HE	0157HE
------	--------	--------	--------	--------	--------	--------	--------	--------	--------	--------

General Unit Data

Nominal Unit Capacity (Tons)	62.4	72.7	82.6	89.4	94.6	117.2	123.7	132.1	144.9	148.5
Number of Independent Refrigerant Circuits	2	2	2	2	2	2	2	2	2	2
Refrigerant Charge, R-410A, Ckt 1/Ckt. 2 (lbs.)	65/65	90/90	90/90	155/155	170/170	155/155	180/180	180/180	195/195	195/195
Oil Charge, Ckt. 1/Ckt. 2, (gal.)	2.2/2.2	2.5/2.2	2.5/2.5	3.1/2.5	3.3/3.3	3.3/3.1	3.7/3.7	3.7/3.7	4.7/4.7	4.7/4.7
Shipping Weight (lbs.)	4533	4911	5089	5773	6253	5905	7087	7087	7889	7889
Operating Weight (lbs.)	4848	5406	5584	6412	6981	6544	7975	7975	8833	8833

Compressors, Scroll

Quantity per Chiller	4	4	4	4	6	4	6	5	6	4
Nominal Size Ckt. 1/ Ckt. 2	15-15/15-15	20-20/15-15	20-20/20-20	25-25/20-20	15-15-15/ 15-15-15	32-32/25-25	20-20-20/ 20-20-20	20-20-20/ 32-32	25-25-25/ 25-25-25	35-35/ 35-35

Condenser

Water Volume (gal.)	26.9	26.9	26.9	44.1	52.4	44.1	52.4	52.4	59.1	59.1
Maximum Water Side Pressure (psig)	150	150	150	150	150	150	150	150	150	150
Maximum Refrigerant Side Pressure (psig)	560	560	560	560	560	560	560	560	560	560
Dia. X Length (inches X feet)	14" X 8'	14" X 8'	14" X 8'	18" X 8'	18" X 10'	18" X 8'	18" X 10'	18" X 10'	18" X 10'	18" X 10'
Water Nozzle Connection Size, (inches)	4	4	4	5	5	5	5	5	5	5

Evaporator

Water Volume (gals.)	37.3	59.8	59.8	59.8	57.6	59.8	77	77	77	77
Maximum Water Side Pressure (psig)	150	150	150	150	150	150	150	150	150	150
Maximum Refrigerant Side Pressure (psig)	450	450	450	450	450	450	450	450	450	450
Dia. X Length (inches X feet)	13" X 8'	16" X 8'	16" X 8'	16" X 8'	15" X 10'	16" X 8'	17" X 10'	17" X 10'	17" X 10'	17" X 10'
Water Nozzle Connection Size, (inches)	6	8	8	8	8	8	8	8	8	8