

Table of contents



Features/Benefits	1,2
Model Number Nomenclature	3
AHRI Capacity Ratings	4,5
Physical Data	6-9
Options and Accessories	10,11
Dimensions	12-21
Application Data	22-29
Selection Procedure	30
Performance Data	31,32
Typical Piping and Wiring	33,34
Typical Control Wiring Schematic	35
Electrical Data	36-47
Controls	48
Guide Specifications	49-51

Model number nomenclature

30HXC 206R - - 671 --
30HXC 076 R - - 6 7 1 AA

<p>Model Description 30HXA — Condenserless Liquid Chiller</p> <p>30HXC — Water-Cooled Liquid Chiller</p> <p>Nominal Size 076 126 186 086 136 206 096 146 246 106 161 261 116 171 271</p> <p>Refrigerant/Cooler Options L — Nitrogen with Minus 1-Pass Cooler M — R-134a with Minus 1-Pass Cooler N — Nitrogen with Standard Cooler P — R-134a with Plus 1-Pass Cooler Q — Nitrogen with Plus 1-Pass Cooler R — R-134a with Standard Cooler</p> <p>Electrical Options - — Across The Line Start A — Non-Fused Disconnect Y — Y-Delta Starter Z — Y-Delta and Non-Fused Disconnect</p>	<p>Factory-Installed Option Codes* AA — 1 BA — 2 CA — 3 KA — 1,2 LA — 1,3 TA — 2,3 ZB — 1,2,3</p> <p>Packaging Code 1 = Standard Domestic 2 = Standard Export</p> <p>Series</p> <p>Voltage Code 1 — 575-3-60 2 — 380-3-60 4 — 230-3-60 5 — 280/230-3-60 6 — 460-3-60 8 — 230-3-50 9 — 380/415-3-50</p> <p>Control Options - — Standard E — Navigator Display with Energy Management U — BACnet Communication Option W — Energy Management Option and BACnet Communication Option</p>
---	--

*Option Code Descriptions: 1 = Minimum Load Control, 2 = Suction Service Valve, and 3 = Medium Temperature Brine.

Quality Assurance

Certified to ISO 9001

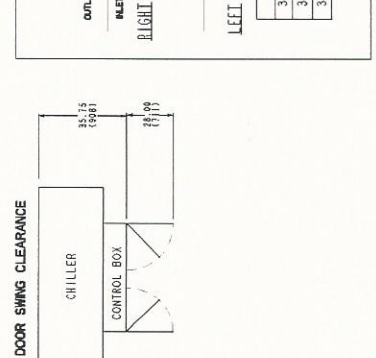
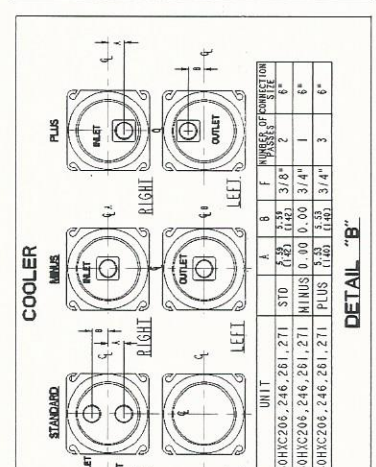
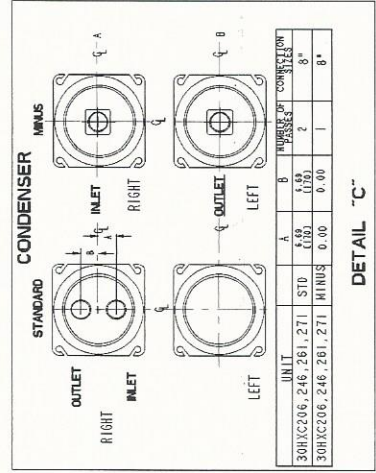
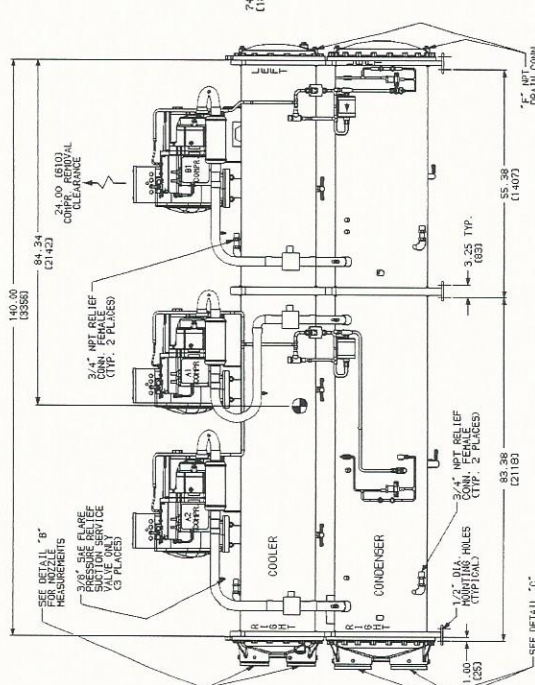
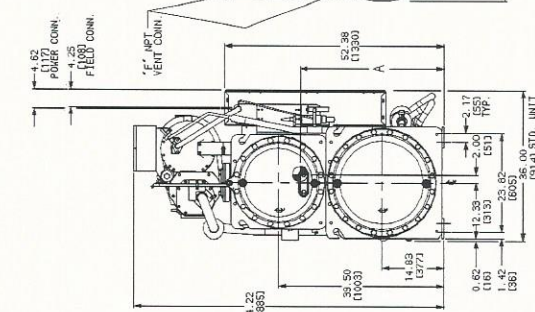
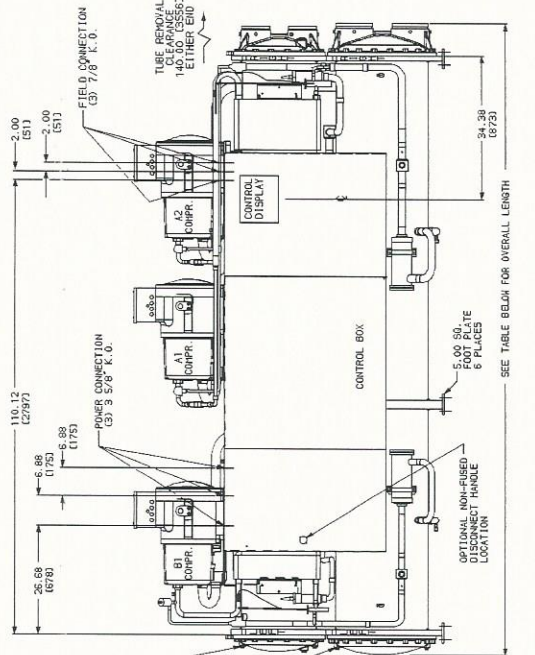
SEISMICOMPLIANT

* Meets IBC 2006, ASCE-7-05, CBC 2007, and OSHPD seismic requirements.

30HXC206-271

- NOTES:
- Operating weight includes weight of water and refrigerant.
 - Denotes center of gravity.
 - Dimensions are in inches (mm).
 - Recommended service clearance around machine is 36 in. (914.4 mm).
 - Victaulic nozzles are standard on all models. Flow switch factory installed in cooler inlet Victaulic nozzle.

UNIT	OPERATING WEIGHT - lb (kg)	A	WGT DISTRIBUTION AT EACH MTG PLATE - lb (kg)					
			1	2	3	4	5	6
30HXC206	10581 (4799)	33.88 (860)	948 (430)	2406 (1091)	1243 (564)	1201 (545)	3139 (1421)	1650 (748)
30HXC246	10969 (4976)	34.38 (873)	985 (447)	2515 (1141)	1306 (592)	1154 (523)	3276 (1486)	1733 (786)
30HXC261	10992 (4986)	34.38 (873)	985 (447)	2520 (1143)	1311 (595)	1154 (523)	3283 (1489)	1739 (789)
30HXC271	11029 (5003)	34.38 (873)	985 (447)	2529 (1147)	1318 (598)	1154 (523)	3294 (1494)	1749 (793)



OVERALL LENGTH TABLE	
COOLER	CONDENSER
STANDARD	152.54 (3875)
COOLER	CONDENSER
STANDARD	160.00 (4064)
PLUS ONE PASS	CONDENSER
STANDARD	160.00 (4064)
PLUS ONE PASS	CONDENSER
STANDARD	160.00 (4064)
PLUS ONE PASS	CONDENSER
STANDARD	160.00 (4064)
PLUS ONE PASS	CONDENSER
STANDARD	160.00 (4064)



ENGLISH (cont)

UNIT SIZE 30HX	161	171	186	206	246	261	271
UNIT OPERATING WEIGHT (lb)							
Water-Cooled (HXC)	7452	7660	7854	10,581	10,969	10,992	11,029
Condenserless (HXA)	5752	5777	5946	7,485	7,621	7,621	7,621
COMPRESSORS	Semi-Hermetic, Twin Screw						
Quantity	2	2	2	3	3	3	3
Nominal Capacity per Compressor (tons)	80/56	66/80	80/80	66/39/80	80/56/80	80/66/80	80/80/80
Economizer	Yes	Yes	Yes	Yes	Yes	Yes	Yes
No. Capacity Steps							
30HXC Unit	6	6	6	8	8	8	8
30HXA Unit (maximum on 30HXC unit with factory-installed option)	8	8	8	11	11	11	11
Minimum Step Capacity (%)							
30HXC Unit	20	20	20	13	13	13	13
30HXA Unit (30HXC unit with factory-installed option)	10	10	10	7	7	7	7
REFRIGERANT (HXC)	R-134a						
Charge* (lb) Circuit A/Circuit B†	157/110	119/140	135/135	200/135	220/135	220/135	220/135
COOLER TYPE	Shell and Tube with Enhanced Copper Tubes						
Part No. 10HX400-	601	611	621	631	632	632	632
Net Fluid Volume (gal)	28.5	28.5	33.4	43.1	47.2	47.2	47.2
Maximum Refrigerant Pressure (psig)	220	220	220	220	220	220	220
Maximum Water-Side Pressure (psig)	300	300	300	300	300	300	300
Water Connections							
Inlet and Outlet (in.) (Std Pass)	5	5	5	6	6	6	6
Drain (NPT) (Std Pass)	3/8	3/8	3/8	3/8	3/8	3/8	3/8
Relief Valve							
Connection (in. NPTF)	3/4	3/4	3/4	3/4	3/4	3/4	3/4
Flow Capacity (lb air/min)	31.7	31.7	31.7	31.7	31.7	31.7	31.7
Relief Setting (psig)	220	220	220	220	220	220	220
Standard Number of Passes	2	2	2	2	2	2	2
OIL SEPARATOR (HXA)							
Part No. 09RX400-	215	214	214	213	213	213	213
Maximum Refrigerant Pressure (psig)	320	320	320	320	320	320	320
Refrigerant Connections (in.)							
Discharge Circuit A/Circuit B	2 1/8/2 1/8	2 1/8/2 1/8	2 1/8/2 1/8	(2) 2 1/8/2 1/8	(2) 2 1/8/2 1/8	(2) 2 1/8/2 1/8	(2) 2 1/8/2 1/8
Liquid Circuit A/Circuit B	1 3/8/1 3/8	1 3/8/1 3/8	1 3/8/1 3/8	1 5/8/1 3/8	1 5/8/1 3/8	1 5/8/1 3/8	1 5/8/1 3/8
Relief Valve							
Connection (in. SAE Flare)	5/8	5/8	5/8	5/8	5/8	5/8	5/8
Flow Capacity (lb air/min)	21.6	21.6	21.6	21.6	21.6	21.6	21.6
Relief Setting (psig)	320	320	320	320	320	320	320
CONDENSER (HXC)	Shell and Tube with Enhanced Copper Tubes						
Part No. 09RX400-	261	262	262	263	264	264	264
Net Fluid Volume (gal)	30.6	37.6	37.6	47.6	55.1	55.1	55.1
Maximum Refrigerant Pressure (psig)	220	220	220	220	220	220	220
Maximum Water-Side Pressure (psig)	300	300	300	300	300	300	300
Water Connections (in.)				Victaulic Type Connection			
Inlet and Outlet (Std Pass)	6	6	6	8	8	8	8
Drain (NPT) (Std Pass)	3/8	3/8	3/8	3/8	3/8	3/8	3/8
Relief Valve							
Connection (in. NPTF)	3/4	3/4	3/4	3/4	3/4	3/4	3/4
Flow Capacity (lb air/min)	31.7	31.7	31.7	31.7	31.7	31.7	31.7
Relief Setting (psig)	220	220	220	220	220	220	220
Standard Number of Passes	2	2	2	2	2	2	2
DISCHARGE LINE**							
Relief Valve							
Connection (in. SAE Flare)	3/8	3/8	3/8	3/8	3/8	3/8	3/8
Flow Capacity (lb air/min)	6.3	6.3	6.3	6.3	6.3	6.3	6.3
Setting (psig)	350	350	350	350	350	350	350

LEGEND

NPTF — National Pipe Thread Female
 SAE — Society of Automotive Engineers

*Charges listed are for 30HXC units. The 30HXA units are shipped with a holding charge only. To determine the refrigerant charge requirements for 30HXA units, see the 30HXA Estimated System Refrigerant Charge table in the Refrigerant Charge section on page 29.

†For 30HXC, HXA units utilizing brine, the unit may require more refrigerant than what is supplied. Additional refrigerant must be field supplied.

**Only on units with factory-installed suction service valves.