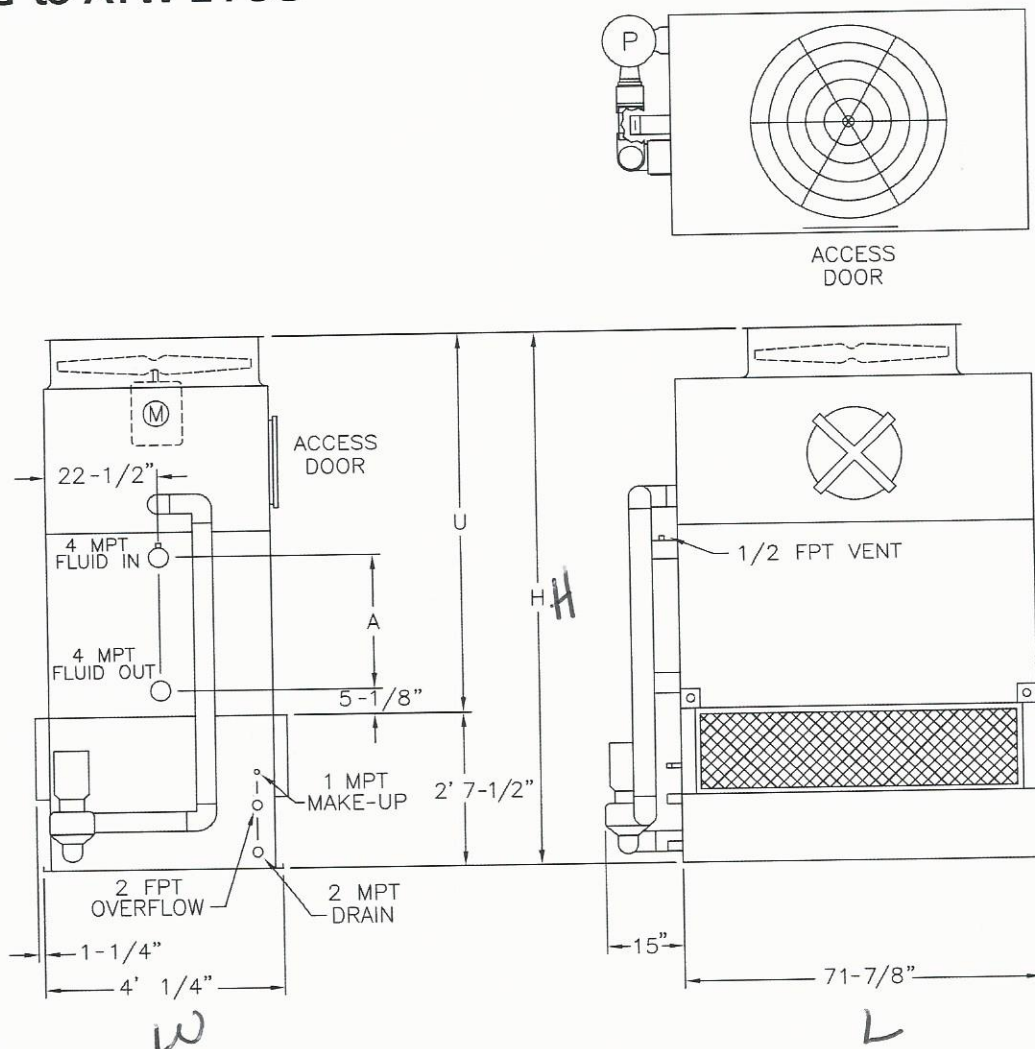


# ATW Engineering Data & Dimensions

## Models

## ATW 24-3G to ATW 24-5G



**Note:** The number of coil connections doubles when the flow rate exceeds 425 GPM on Models ATW 24-3G thru ATW 24-5G.

ATW Model Number	Weights			Fans		Spray Pump		Coil Volume (Gallons)	Remote Sump			Dimensions		
	Shipping	Heaviest Section†	Operating	HP	CFM	HP	GPM		Gallons* Required	Conn. Size	Operating Weight	H	U	A
24-3G	2,610	2,160	4,230	5	14,300	0.75	135	56	120	6"	3,890	8' 5-1/8"	5' 9-5/8"	19-1/2"
24-4G	3,030	2,570	4,790	5	13,900	0.75	135	73	120	6"	4,450	9' 5/8"	6' 5-1/8"	27"
24-5G	3,470	3,020	5,390	5	13,400	0.75	135	89	120	6"	5,050	9' 8-1/8"	7' 5/8"	34-1/2"

† Heaviest section is the coil/fan section.

\* Gallons shown is water in suspension in unit and piping. Allow for additional water in bottom of remote sump to cover pump suction and strainer during operation (12" would normally be sufficient).

▲ Unit dimensions may vary slightly from catalog. See factory certified prints for exact dimensions.