

MODEL YMC² MAGNETIC BEARING CENTRIFUGAL LIQUID CHILLERS

165-1000 Tons
580-3520 kW
50 & 60 Hz
HFC-134a
or HFC-513A

Model #: YMC2-S2110AB
Serial #: SMK-150650

Year: 2022
Size: 600 Tons



Shipping Weight: 28,089 lbs.
Operating Weight: 33,304 lbs.

L: 16' 9" W: 6' 7" H: 8' 8"



 **YORK**[®]
INSTALL CONFIDENCE

Nomenclature

YMC2 - S 2110 A B

SYSTEM NOMENCLATURE

Y M C 2 - S 0756 A B

YORK

Magnetic Bearing

Centrifugal Chiller

S = Single Stage

T = Two Stage

Mod Level

A = Refrigerant R-134a

B = Refrigerant R-513A

Capacity in KW

M6 C -295FAC

COMPRESSOR NOMENCLATURE

M2 B - 197 F A A

Motor

Motor Design Level

Impeller Tip Diameter (mm)

Rotation

F = Forward

R = Reverse

Gas Path Revision Level

Impeller Design Revision Level

ED3314-656-5S1-2GTLL

CB3314-471-BS1-2GTLL

VESSEL NOMENCLATURE

E A 25 14 271 B R 1 1 F C R

Vessel

E = Evaporator

C = Condenser

Heat Exchanger Mod Level

Nominal Inside Diameter (Inches)

Nominal Length (Feet)

Marketing Tube Number

Tube Code

B = 3/4" Code 1

C = 3/4" Code 2

D = 3/4" Code 3

E = 3/4" Code 4

2 = 1" Code 1

3 = 1" Code 2

4 = 1" Code 3

5 = 1" Code 4

Vessel Refrigerant Pressure Code

R = 180 psi

S = 235 psi

T = 300 psi

U = 350 psi

V = 400 psi

Inlet from Front View

R = Right

L = Left

Waterbox Type

S = Compact

T = Marine

Water Connection Type

F = Flanges

G = Grooved Standard

A = Victaulic AGS

Number of Passes

Water Side Pressure Code

1 = 150 psi

3 = 300 psi

HYP0730XHC30B-46B

VARIABLE SPEED DRIVE NOMENCLATURE

HYP 774 X H 15 D - 40

Model

Amps

X = Factory Installed

R = Field Installed

H = YMC² Chiller

40 = 380V 60Hz

50 = 400V 50Hz

46 = 460V 60Hz

68 = 415V 50Hz

D = Disconnect Switch

B = Circuit Breaker

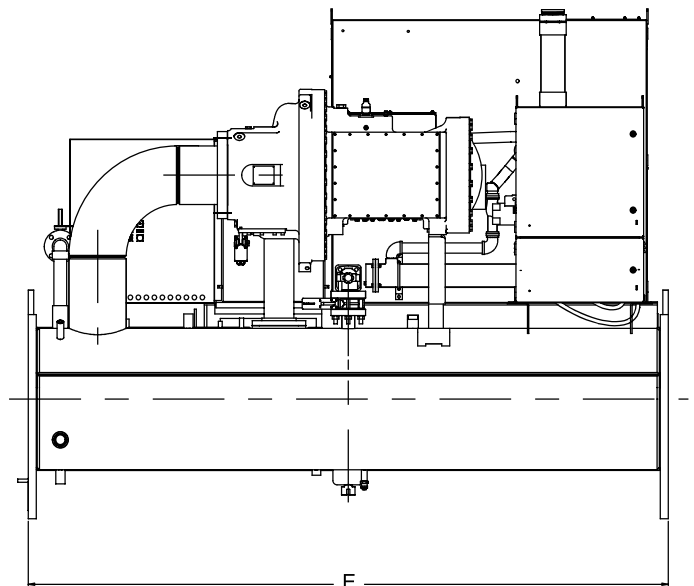
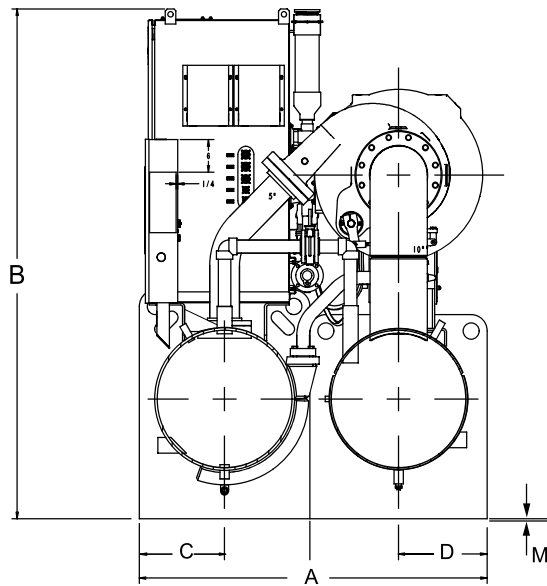
Liquid DWP

15 = 150 psi

30 = 300 psi

Unit Dimensions (Cont'd)

M6 MOTOR



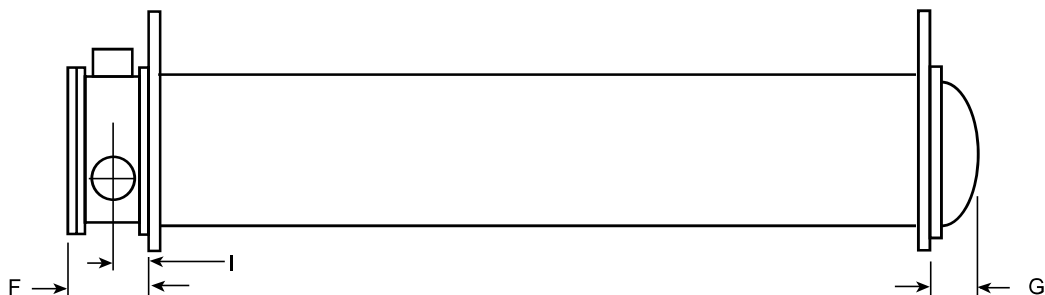
LD18627

ADDITIONAL OPERATING HEIGHT CLEARANCE TO FLOOR - IN (MM)	
TYPE OF CHILLER MOUNTING	M
NEOPRENE PAD ISOLATORS	1 3/4" (45)
SPRING ISOLATORS 1" DEFLECTION	1" (25)
DIRECT MOUNT	3/4" (19)

EVAPORATOR CODE	CONDENSER CODE	M6 MOTOR DIMENSIONS FT - IN (MM)					
		A	B		C	D	E
			774A VSD	1278A VSD			
EC3312	CB2912	6' 2" (1880)	8' 3-1/2" (2527)	8' 3-1/2" (2527)	1' 5-1/2" (445)	1' 7-1/2" (495)	12' (3658)
EC3314	CB3314	6' 7" (2007)	8' 5-1/2" (2578)	8' 7-1/2" (2629)	1' 8" (508)	1' 7-1/2" (495)	14" (4267)
EC3914	CB3314	7' 4" (2235)	8' 8-1/2" (2654)	8' 8-1/2" (2654)	1' 8" (508)	2' (610)	14' (4267)
EC3914	CB3914	7' 10" (2388)	8' 11" (2718)	9' 1-1/8" (2772)	1' 11" (584)	2' (610)	14' (4267)

Unit Dimensions (Cont'd)

CONDENSERS – MARINE WATER BOXES



LD01342B_1

MARINE WATER BOXES DIMENSIONS FT - IN (MM)							
CONDENSER SHELL CODE	150 AND 300 PSI						
	1-PASS		2-PASS			3-PASS	
	F	I	F	I	G	F	I
CA21	1' 9" (533)	9-7/8" (251)	1' 4-7/8" (429)	7-13/16" (198)	5-29/32" (150)	1' 4-7/8" (429)	7-13/16" (198)
CA25	1' 11-5/8" (600)	11-1/8" (283)	1' 7-1/2" (495)	9-1/16" (230)	6-7/16" (164)	1' 7-1/2" (495)	9-1/16" (230)
CB21 (150PSI)	1' 9" (533)	9-7/8" (251)	1' 4-7/8" (429)	7-13/16" (198)	5-29/32" (150)	1' 4-7/8" (429)	7-13/16" (198)
CB21 (300PSI)	1' 11-7/16" (595)	10-29/32" (277)	1' 7-5/16" (491)	8-27/32" (225)	0'-7-9/32" (185)	1' 7-5/16" (491)	8-27/32" (225)
CB25 (150PSI)	1' 11-5/8" (600)	11-1/8" (283)	1' 7-1/2" (495)	9-1/16" (230)	6-7/16" (164)	1' 7-1/2" (495)	9-1/16" (230)
CB25 (300PSI)	2' 2-3/8" (670)	1' 1/4" (311)	1' 10-1/4" (565)	10-3/16" (259)	8-3/16" (208)	1' 10-1/4" (565)	10-3/16" (259)
CC25 (150PSI)	1' 11-5/8" (600)	11-1/8" (283)	1' 7-1/2" (495)	9-1/16" (230)	6-7/16" (164)	1' 7-1/2" (495)	9-1/16" (230)
CC25 (300PSI)	2' 2-3/8" (670)	1' 1/4" (311)	1' 10-1/4" (565)	10-3/16" (259)	8-3/16" (208)	1' 10-1/4" (565)	10-3/16" (259)
CB29 (150PSI)	2' 3/4" (629)	11-5/8" (295)	1' 9-3/8" (543)	9-3/4" (239)	0'-7-7/8" (200)	1' 9-1/2" (546)	9-3/4" (248)
CB29 (300PSI)	2' 2-1/2" (673)	1' 1/4" (311)	1' 11-1/2" (597)	10-5/8" (270)	9-7/32" (234)	1' 11-1/2" (597)	10-5/8" (270)
CB33 (150PSI)	2' 2-7/8" (683)	1' 5/8" (320)	1' 9-1/2" (546)	10" (254)	8-15/16" (227)	1' 9-5/8" (549)	10" (254)
CB33 (300PSI)	2' 4-1/4" (718)	1' 7/8" (327)	1' 11" (584)	10-1/4" (260)	9-1/2" (241)	1' 11" (584)	10-1/4" (260)
CB39 (150PSI)	2' 11-7/8" (911)	1' 5" (432)	2' 3-3/4" (705)	1' 2" (356)	10-1/2" (268)	2' 5-7/8" (759)	1' 2" (356)
CB39 (300PSI)	2' 6-1/2" (775)	1' 3-1/4" (387)	2'-0-1/2" (622)	1' 1/4" (311)	10-3/4" (249)	2' 1/2" (622)	1' 1/4" (311)

Weights (Cont'd)

M6 MOTOR

TABLE 17 - EVAPORATOR WEIGHTS, DRY*

M6 MOTOR CHILLERS	EVAPORATOR		150PSI COMPACT WATER BOX WEIGHT LBS (KG)			300PSI COMPACT WATER BOX WEIGHT LBS (KG)			150PSI MARINE WATER BOX WEIGHT LBS (KG)			300PSI MARINE WATER BOX WEIGHT LBS (KG)		
	CODE	WEIGHT LBS (KG)	1-PASS	2-PASS	3-PASS	1-PASS	2-PASS	3-PASS	1-PASS	2-PASS	3-PASS	1-PASS	2-PASS	3-PASS
	EC3312	7477 (3392)	340 (154)	383 (174)	380 (172)	1062 (482)	943 (428)	878 (398)	1822 (826)	1101 (499)	1850 (839)	3214 (1458)	1998 (906)	2986 (1354)
EC3314	8389 (3805)	340 (154)	383 (174)	380 (172)	1062 (482)	943 (428)	878 (398)	1822 (826)	1101 (499)	1850 (839)	3214 (1458)	1998 (906)	2986 (1354)	
EC3914	11834 (5368)	678 (308)	712 (323)	740 (336)	1430 (649)	1310 (594)	1266 (574)	2778 (1260)	1785 (810)	2856 (1295)	4740 (2150)	2947 (1337)	4502 (2042)	

*Weights based on maximum tube bundle allowed per shell.
Shell weights assume max bundle size (for 3/4" tube), heaviest tube (e-179; c-203), 300#water (if available)
Waterbox weight includes both waterboxes and covers/return

TABLE 18 - CONDENSER WEIGHTS, DRY*

M6 MOTOR CHILLERS	CONDENSER		150PSI COMPACT WATER BOX WEIGHT LBS (KG)			300PSI COMPACT WATER BOX WEIGHT LBS (KG)			150PSI MARINE WATER BOX WEIGHT LBS (KG)			300PSI MARINE WATER BOX WEIGHT LBS (KG)		
	CODE	WEIGHT LBS (KG)	1-PASS	2-PASS	3-PASS	1-PASS	2-PASS	3-PASS	1-PASS	2-PASS	3-PASS	1-PASS	2-PASS	3-PASS
	CB2912	7473 (3390)	340 (154)	354 (161)	354 (161)	852 (386)	735 (333)	678 (308)	1408 (639)	891 (404)	1416 (642)	2360 (1070)	1468 (666)	2170 (984)
CB3314	9782 (4437)	406 (184)	419 (190)	444 (201)	1066 (484)	845 (383)	872 (396)	1918 (870)	1159 (526)	1888 (856)	3098 (1405)	1827 (829)	2816 (1277)	
CB3914	10297 (4671)	692 (314)	757 (343)	740 (336)	1630 (739)	1436 (651)	1272 (577)	2944 (1335)	1849 (839)	2964 (1344)	4924 (2234)	2998 (1360)	4410 (2000)	

*Weights based on maximum tube bundle allowed per shell.
Shell weights assume max bundle size (for 3/4" tube), heaviest tube (e-179; c-203), 300#water (if available)
Waterbox weight includes both waterboxes and covers/return

Weights (Cont'd)

M6 MOTOR

TABLE 19 - VSD WEIGHTS

M6 MOTOR CHILLERS	VSD	WEIGHT LBS (KG)
	HYP0774XHC30B-46	2060 (935)
HYP1278XHC30B-46	3806 (1727)	

TABLE 20 - COMPRESSOR WEIGHTS

M6 MOTOR CHILLERS	COMPRESSOR	WEIGHT LBS (KG)
	M6C-295FAC	4298 (1950)
M6C-331FAC	4439 (2014)	

TABLE 21 - UNIT ASSEMBLY – PANELS, PIPING, WIRING, ETC

M6 MOTOR CHILLERS	UNIT ASSEMBLY - PANELS, PIPING, WIRING, ETC.	WEIGHT LBS (KG)
	M6C-295FAC	1300 (591)
M6C-331FAC	1300 (591)	

TABLE 22 - REFRIGERANT & WATER WEIGHT

M6 MOTOR CHILLERS	EVAPORATOR	CONDENSER	REFRIGERANT WEIGHT LBS (KG)*	WATER WEIGHT LBS (KG)**
	EC3312	CB2912	1331 (605)	2863 (1299)
EC3314	CB3314	1626 (739)	3589 (1628)	
EC3914	CB3314	1908 (867)	4232 (1920)	
	CB3914	2072 (942)	4892 (2220)	

*Refrigerant weight based on maximum tube bundle.

** Water weight is the total water in both shells and for 150psi, 2-pass, compact water boxes.