



Replacement Parts List No. 0700017600
Revision AG 06/2018

**DAIKIN
McQUAY®**

McQuay
Air Conditioning

AAF®
Air Conditioning

Remington
Air Conditioning

CLIMATE CONTROL
A UNIT OF SNYDER GENERAL CORPORATION



AAF American Air Filter
BETTER AIR IS OUR BUSINESS

SINGER
CLIMATE CONTROL DIVISION

Westinghouse 
AIR CONDITIONING DIVISION • STAUNTON, VIRGINIA



Daikin
Daikin McQuay
McQuay

Magnitude™
Magnetic Bearing
Centrifugal Chiller

WME
0500

To find your Daikin Applied parts distributor, call 1-800-377-2787 or visit www.DaikinApplied.com

Contents

Parts List Revision History	3
Unit Nomenclature	
Model Number Nomenclature	4
Serial Number Nomenclature	4
Model Number- Complete	5- 10
Electrical Legend	11
Controls	
Main Control Box	12
VFD Enclosure	13
VFD Chassis	14, 15
Compressor Wiring Harness	15
VFD Power Supply Plate	16, 17
OITS- Operator Interface Touch Screen Panel and Rapid Restore	18
Control Sensors	
087 Impeller Units Sensor Location Diagrams	19
092 Impeller Units Sensor Location Diagrams	20
Components	21
Compressor	
Motor/Bearing Assemblies	22
Motor/Bearing Assembly Components	23
087 Impeller- (Compressor Revision/Code 07= AAA)	
Impeller Assembly	24
Impeller Seal & Compressor Fittings	25, 26
Discharge Housing & High Speed Shaft Seal	27
Inlet Assembly	28, 29
092 Impeller- (Compressor Revision/Code 07= AAB)	
Impeller Assembly	30
Impeller Seal & Compressor Fittings	31, 32
Discharge Housing & High Speed Shaft Seal	33
Inlet Assembly	34, 35
Unit Assembly	
Relief & Shutoff Valves	36, 37
Discharge Piping Stack	38, 39
Hot Gas Bypass 092 Impeller	40, 41
Suction Piping	42, 43
Liquid Injection	44
Rotor Cooling 087 Impeller	45, 46
Rotor Cooling 092 Impeller	47- 49
Stator Cooling 087 Impeller	50, 51
Stator Cooling 092 Impeller	52, 53
VFD Cooling	54
Liquid Line	55, 56
Condenser	
Diagrams	57
26" Condenser Heads, Head Gaskets & Hardware	58, 59
30" Condenser Heads, Head Gaskets & Hardware	60, 61
Tube Counts, Tubes, Sight Glass, Shut Off Valve & Gasket, Charge Valve & Cap	62
Evaporator	
Diagrams	63
30" Evaporator Heads, Head Gaskets & Hardware	64, 65
36" Evaporator Heads, Head Gaskets & Hardware	66, 67
Tube Counts, Tubes, Sight Glass, Charge Valve & Cap	68
Critical Parts List	CPL1

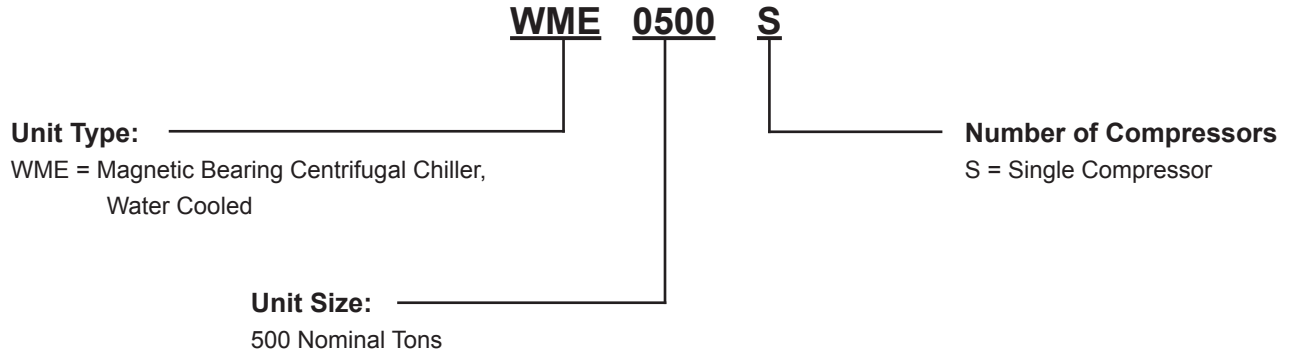
Parts List Revision History

Revision	Date	Description
		Revisions A thru Z and AA thru AB have been archived.
AC	09/2015	Page 14: Added Bubble Ref. 16. Page 15: Added Backup Battery for VFD Controller and Ref. 16 Wire Harness/Cable Kit and Footnote #2. Page 21: Updated p/n for S07 & S13 Sensors, was 071568601. Updated p/n for S11, was 071568511. Page 23: Changed Ref. 8 to 8A. Added p/n and Bubble for Ref. 8B. Removed Footnote 3. Page 32: Added footnote #4 to Ref. 505. Page 53: Corrected p/n for Ref. 026 Coil-Sol Valve, was 331796054. Pages 57 & 62: Added Bub. Ref. 252 (Screw) and 253 (Gasket). Page 68: Corrected p/n for Ref. 331, was 073249901. CPL1: Added Critical Parts List.
AD	05/2016	Page 5: Corrected Code 9 Evap Tube Count for Mixed Diameter Tubes. Page 6: Corrected Code 17 Cond Tube Count for Mixed Diameter Tubes. Page 23: Added components for Compressor Controller Module.
AE	10/2017	Pages 5-10: Updated Code Index. Page 17: Added Amp descriptions to Ref. 20, 21, 22 Fuses. Page 41: Corrected qty for Ref. 020 Expansion Valve, qty was 4. Page 57: Corrected diagram for Condenser Water Box Head option. Page 62: Corrected description and qtys for Ref. 330 Condenser Charge Valves. Page 63: Corrected diagram for Evaporator Water Box Head option. Page 68: Corrected description and qtys for Ref. 330 Evaporator Charge Valves.
AF	11/2017	Page 21: Updated info for Transducers to include part #s for units built before & after Sept. 2017. CPL1: Updated info for Transducers to include part #s for units built before & after Sept. 2017.
AG	06/2018	Page 5: Corrected Tube Counts for Code 9 Digit 1= M, was 179 + 95. Page 12: Added Ref. 30 Ethernet Switch and Ref. 31 USB Flash Drive. Page 23: Removed component info for Ref. 2 Controller Module- Compressor.

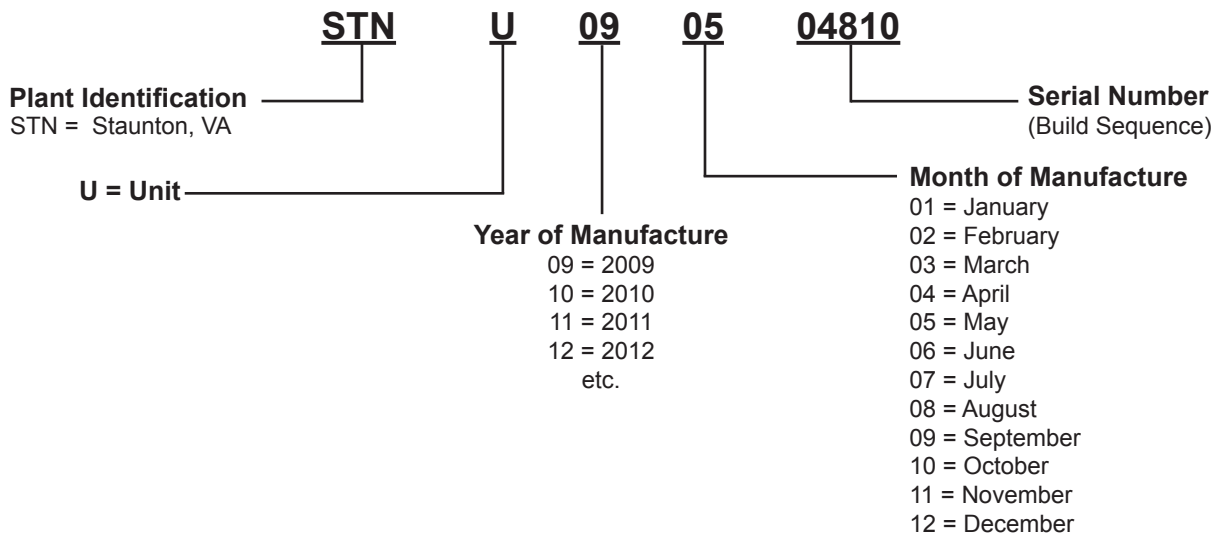
Nomenclature

Model and Serial Number Nomenclature

Model Number Nomenclature



Serial Number Nomenclature



Nomenclature

Model Number- Complete

Code:	<u>WME</u>	<u>0500S</u>	<u>S</u>	<u>M2</u>	<u>S</u>	<u>S</u>	<u>AAB</u>	<u>E3012</u>	<u>BE</u>	<u>2RA</u>	<u>C4</u>	<u>0440</u>	<u>CC</u>	<u>Y</u>	<u>A</u>	<u>C3012</u>	<u>BLYY</u>					
Code No.:	1	2	3	4	5	6	7	8	9	10	11	12	13	14	15	16	17					
	<u>2RA</u>	<u>C4</u>	<u>1050</u>	<u>CC</u>	<u>Y</u>	<u>A</u>	<u>A</u>	<u>134</u>	<u>082</u>	<u>E1</u>	<u>YY</u>	<u>EAYYYY</u>	<u>YYYYYYYY</u>	<u>YYYY</u>								
	18	19	20	21	22	23	24	25	26	27	28	29	30	31								
	<u>H2</u>	<u>B</u>	<u>1</u>	<u>4</u>	<u>A</u>	<u>Y</u>	<u>Y</u>	<u>Y</u>	<u>1</u>	<u>B</u>	<u>A</u>	<u>0150</u>	<u>U</u>	<u>Y</u>	<u>Y</u>	<u>Y</u>	<u>Y</u>	<u>Y</u>	<u>Y</u>	<u>0</u>	<u>A</u>	<u>VFDM</u>
	32	33	34	35	36	37	38	39	40	41	42	43	44	45	46	47	48	49	50	51	52	53
	<u>400</u>	<u>S</u>	<u>YYYY</u>	<u>Y</u>	<u>YY</u>	<u>S</u>	<u>AA</u>	<u>ST</u>	<u>0000</u>	<u>0000</u>	<u>YY</u>	<u>YY</u>	<u>YY</u>	<u>N1</u>	<u>UM</u>	<u>C2</u>						
	54	55	56	57	58	59	60	61	62	63	64	65	66	67	68	69						
	<u>05S</u>	<u>YY</u>	<u>YY</u>	<u>0000</u>	<u>0000</u>	<u>Y</u>																
	70	71	72	73	74	75																

1. Model Type

WME= Magnetic Bearing Centrifugal Chiller, Water Cooled

2. Unit Size / Number of Compressors

First 4 Digits= Unit Size in Nominal Tons

0500= 500 Ton

Fifth Digit= Number of Compressors

S= Single Compressor

3. Refrigerant Circuiting

S= Single Circuit

4. Motor Code

M2= 3 Winding, 3PH, 440- 575V; M3= 1 Winding, 6PH, 380- 575V

5. Voltage Code

U= 380/60; A= 440/60; R= 460/60; S= 480/60; D= 575/60; F 380/50; G= 400/50; K= 415/50

6. Sound Reduction Package

S= Sound Reduction Package

7. Compressor Revision Level

AAA= Compressor Revision Level (087 Impeller); AAB= Compressor Revision Level (092 Impeller)

8. Evaporator Shell Size

E3012= Evaporator, 30" Diameter/12' Long; E3612= Evaporator, 36" Diameter/12' Long

9. Evaporator Tube Count / Tube Type

First Digit= Tube Count; 3/4" Diameter Tube

30" Diameter: B= 300; C=262; X=Special

36" Diameter: B= 488; C= 414; D= 352; X= Special

First Digit= Tube Count; 1" Diameter Tube

30" Diameter: E= 178; F= 149; X= Special

36" Diameter: E= 271; F= 243; G= 209; X= Special

First Digit= Tube Count; Mixed Diameter Tube

30" Diameter: J= 155(3/4" tubes)+90(1" tubes); K= 127(3/4" tubes)+81(1" tubes); X= Special

36" Diameter: J= 244(3/4" tubes)+136(1" tubes); K= 215(3/4" tubes)+108(1" tubes); M= 193(3/4" tubes)+102(1" tubes); X= Special

Second Digit= Tube Type

E= Turbo EHP .025 Wall, 3/4"; F= Turbo EHP .028 Wall, 3/4"; Q= Turbo EHP .035 Wall, 3/4"; T= TC SS 28FPI .028 Wall, 3/4";

Z= TC Titanium 32FPI .028 Wall, 3/4"; G= CU Turbo .025 Wall, 1"; D= CU Turbo .028 Wall, 1"; H= CU Turbo .035 Wall, 1";

U= CU Turbo .025 Wall, B5 3/4"; V= CU Turbo .028 Wall, B5 3/4"; 1= 90/10 CuNi .028 Wall, 3/4"; 4= 90/10 CuNi .035 Wall, 3/4";

X= Special

Nomenclature

Model Number- Complete, Continued

10. Evaporator Head / Waterbox Description

First Digit= Number of Water Passes

1= 1 Pass; 2= 2 Pass; 3= 3 Pass; X= Special

Second Digit= Inlet Nozzle Location

L= Left; R= Right

Third Digit= Nozzle Configuration

A= Dished Head Victaulic; B= Dished Head Flanged; C= Waterbox Top Victaulic; E= Waterbox Top Flanged;

G= Waterbox Rear Victaulic; H= Waterbox Rear Flanged; X= Special

11. Evaporator Design Pressures

C1= Refrigerant Side Pressure: 200 PSIG; Waterside Pressure: 150 PSIG ASME

C4= Refrigerant Side Pressure: 200 PSIG; Waterside Pressure: 150 PSIG Non-ASME

C5= Refrigerant Side Pressure: 200 PSIG; Waterside Pressure: 300 PSIG Non-ASME

C8= Refrigerant Side Pressure: 200 PSIG; Waterside Pressure: 250 PSIG Non-ASME

C9= Refrigerant Side Pressure: 200 PSIG; Waterside Pressure: 300 PSIG ASME

XX= Special

12. Evaporator Leaving Water Temperature

Code is listed in tenths of °F. (Example: 0440= 44.0 °F)

13. Evaporator Tube Sheet & Head Material

First Digit= Tube Sheet Material

C= Carbon Steel

E= Enecon (Ceramalloy)

N= Monel Clad

S= Stainless Steel Clad

T= Titanium Clad Steel

X= Special

Second Digit= Head Material

C= Carbon Steel

D= Devcon

E= Enecon (Ceramalloy)

X= Special

14. Tube Cleaning System

Y= None

15. Evaporator Revision Level

A= Revision A; B= Revision B

16. Condenser Shell Diameter & Length

C2612= Condenser, 26" Diameter/12' Long

C3012= Condenser, 30" Diameter/12' Long

C3612= Condenser, 36" Diameter/12' Long

17. Condenser Tube Type & Count

First Digit= Tube Count; 3/4" Diameter Tube

30" Diameter: B= 584; C=526; D= 476; X=Special

36" Diameter: B= 911; C= 775; D= 670; X= Special

First Digit= Tube Count; 1" Diameter Tube

26" Diameter: E= 268; F= 232; X= Special

30" Diameter: E= 339; F= 295; G= 265; X= Special

36" Diameter: E= 534; F= 480; G= 417; X= Special

First Digit= Tube Count; Mixed Diameter Tube

26" Diameter: E= 268; F= 232; X= Special

30" Diameter: E= 339; F= 295; G= 265; X= Special

36" Diameter: E= 534; F= 480; G= 417; X= Special

Second Digit= Tube Type

L= Turbo CSL .025 Wall, 3/4"; N= Turbo CSL .028 Wall, 3/4"; P= Turbo CSL .035 Wall, 3/4";

T= TC SS 28FPI .028 Wall, 3/4"; Z= TC Titanium 32FPI .028 Wall, 3/4"; 1= 90-10 CU-NI .028 Wall, 3/4";

4= 90-10 CU-N .035 Wall, 3/4"; A= CU Turbo .025 Wall, 1"; B= CU Turbo .028 Wall, 1"; C= CU Turbo .035 Wall, 1";

X= Special

Digits 3 & 4

YY= None; XX= Special

Nomenclature

Model Number- Complete, Continued

18. Condenser Head / Waterbox Description

First Digit= Number of Water Passes

1= 1 Pass; 2= 2 Pass; 3= 3 Pass; X= Special

Second Digit= Inlet Nozzle Location

L= Left; R= Right

Third Digit= Nozzle Configuration

A= Dished Head Victaulic; B= Dished Head Flanged; D= Waterbox Top Victaulic; F= Waterbox Top Flanged;
G= Waterbox Front Victaulic; H= Waterbox Front Flanged; X= Special

19. Condenser Design Pressures

D1= Ref Side Pr: 225 PSIG; Waterside Pr: 150 PSIG ASME

D4= Ref Side Pr: 225 PSIG; Waterside Pr: 150 PSIG Non-ASME

D5= Ref Side Pr: 225 PSIG; Waterside Pr: 300 PSIG Non-ASME

D8= Ref Side Pr: 225 PSIG; Waterside Pr: 250 PSIG Non-ASME

D9= Ref Side Pr: 225 PSIG; Waterside Pr: 300 PSIG ASME

XX= Special

20. Maximum Condenser Leaving Water Temperature

Code is listed in tenths of °F. (Example: 1050= 105.0 °F)

21. Condenser Tube Sheet & Head Material

First Digit= Tube Sheet Material

C= Carbon Steel

E= Enecon (Ceramalloy)

N= Monel Clad

S= Stainless Steel Clad

T= Titanium Clad Steel

X= Special

Second Digit= Head Material

C= Carbon Steel

D= Devcon

E= Enecon (Ceramalloy)

X= Special

22. Condenser Tube Cleaning System

Y= None

23. Condenser Model Revision

A= Revision A; B= Revision B

24. Pressure Vessel Code

A= ASME; C= PED; P= Chinese; 1= British Columbia; 2= Alberta; 3= Saskatchewan; 4= Manitoba; 5= Ontario; 6= Quebec;
7= New Brunswick; 8= Nova Scotia; 9= Prince Edward Island; 0= Newfoundland; U= Yukon; F= Nunavut; W= NW Territories

25. Refrigerant Type

134= R134A Refrigerant

26. Refrigerant Weight

Total Refrigerant weight (lbs.) divided by 10 rounded to the next whole number. (Example: 815/10= 81.5, Round up to 082)

27. Electronic Expansion Valve Circuit #1

E1= Electronic Valve Size 1

28. Electronic Expansion Valve Circuit #2

YY= None

29. MicroTech Controls

EAYYYY= MicroTech-E, Rev. A

30. BAS Card

BMSTPEYY= BACnet; LYYYYYYY= LONmark; MBYYYYYY= Modbus; YYYYYYYY= None

Nomenclature

Model Number- Complete, Continued

31. Controls Options

YYYY= None
RRYY= Rapid Restore

32. Insulation

First Digit= Condenser & Evaporator Shell Insulation
H= ¾" Closed Cell Foam Insulation
3= 1½" Closed Cell Foam Insulation
Y= None
X= Special
Second Digit= Condenser & Evaporator Head Insulation
1= Return Head(s) Only
2= Return & Connection Heads
Y= None
X= Special

33. Water Flow Indication

B= Evaporator & Condenser Flow Control; X= Special

34. Paint

1= Standard Paint; X= Special

35. Packaging

2= Open Export Crate; 3= Totally Enclosed Export Crate; 4= Shipping Bag with Standard Wood Skid;
6= Shipping Bag with Totally Enclosed Export Crate; 7= Shipping Bag with Open Export Crate; X= Special

36. Refrigerant Tag

A= Full Factory Charge; B= Holding Charge R134a; N= Holding Charge, Nitrogen; X= Special

37. Special Features

M= Stock Modification; Y= None; X= Special

38. Not a WME Code Item

Y= None

39. Knockdown Option

1= Compressor & VFD removed, run tested, Nitrogen holding charge; 2= Full Knockdown option, Nitrogen holding charge;
3= Refrigerant in Compressor, Full Factory charge; Y= None; X= Special

40. Testing

Y= None
1= Run test only
2, 9, A, B, C, D, E, F, G, H, J, Q, S= Various Witness Tests
3, 4, 5, 6, 7, K, L, M, N, P, R, T= Various Certified Performance Tests
8= Non certified Sound Test
X= Special

41. Approval Listing

A= AHRI only; B= AHRI/ETL/CETL; C= PED; E= ETL/CETL; N= ARI/OSP-IBC; O= AHRI/ETL/CETL/OSP-IBC;
P= ETL/CETL/OSP-IBC; Q= OSP-IBC; X= Special; Y= None

42. Unit Model Revision

A= Revision A

43. Refrigeration Tons

0000= Data Calculated from Selection Program (Example: 0150= 150 Tons)

44. Startup

U= Domestic Startup; 7= Canadian Startup; Y= Export, No Startup

Nomenclature

Model Number- Complete, Continued

45. First Year Warranty

Y= Entire Unit Parts + Labor (Standard); C= Entire Unit Parts + Compressor Labor Only; P= Entire Unit Parts Only (Export standard);
F= Entire Unit Parts + Labor (Standard) + 5 year Compressor Parts

46. Extended Warranty

(These Codes apply to Parts and/or Labor for the complete unit.)

C= Extended 1 year parts; D= Extended 1 year parts + Labor; E= Extended 2 year parts; F= Extended 2 year parts + Labor;
G= Extended 3 year parts; H= Extended 3 year parts + Labor; J= Extended 4 year parts; K= Extended 4 year parts + Labor;
1= Extended 5 year parts; 2= Extended 5 year parts + Labor; 3= Extended 6 year parts; 4= Extended 6 year parts + Labor;
5= Extended 7 year parts; 6= Extended 7 year parts + Labor; 7= Extended 8 year parts; 8= Extended 8 year parts + Labor;
9= Extended 9 year parts; T= Extended 9 year parts + Labor

(These Codes apply to the Compressor & Drive Train Only.)

L= Extended 1 year parts; M= Extended 1 year parts + Labor; N= Extended 2 year parts; O= Extended 2 year parts + Labor;
P= Extended 3 year parts; Q= Extended 3 year parts + Labor; R= Extended 4 year parts; S= Extended 4 year parts + Labor;
U= Extended 5 year parts; V= Extended 5 year parts + Labor; W= Extended 9 year parts; Z= Extended 9 year parts + Labor;
Y= None; X= Special

47. Order Type

B= BOM only; C= Compressor Kit; M= Modification; R= Retrofit Kit; Y= Standard

48- 50. Not WME Code Items

Y= None

51. Refrigerant Warranty

0= None; 1= One Year; 2= Two Years; 3= Three Years; 4= Four Years; 5= Five Years; 6= Six Years; 7= Seven Years;
8= Eight Years; 9= Nine Years; T= Ten Years

52. Delayed Warranty Start

A= No Additional Months; B= Two Additional Months; C= Four Additional Months; D= Six Additional Months;
E= Eight Additional Months; F= Ten Additional Months; G= Twelve Additional Months

53. VFD Type

VFDM= VFD Magnetic Bearing Chiller

54. VFD Size

400= 400A VFD Max Output Amps, 6 Phase; 500= 500A VFD Max Output Amps, 3 Phase

55. Power Assembly

S= Single Power Assembly, 3 Phase; D= Dual Power Assembly, 6 Phase

56. Transformer Type

40SD= 400A AutoTransformer - 3 Phase; 60SU= 600A AutoTransformer - 3 Phase;
50SD= 500A Stepdown AutoTransformer - 6 Phase; 73ST= 730A AutoTransformer - 6 Phase;
73SU= 730A Stepup AutoTransformer - 6 Phase; YYYY= None

57. Power Meter

M= Power Meter 7350; Y= None; X= Special

58. Not a WME Code Item

YY= None

59. Input Voltage, Compressor Motor / Electrical Power (Code 59 MUST= Code 05)

U= 380/60; A= 440/60; R= 460/60; S= 480/60; D= 575/60; F 380/50; G= 400/50; K= 415/50

60. Manufacturing Location of VFD

AA= Made in the USA; AB= Made in Europe

61. Short Circuit Current Rating (SCCR)

LL= Short Circuit Current Rating 25KA (use with 575V); ST= Short Circuit Current Rating 35KA;
MH= Short Circuit Current Rating 50KA (use with 575V); HH= Short Circuit Current Rating 65KA
VH= Short Circuit Current Rating 100KA; XX= Special

Nomenclature

Model Number- Complete, Continued

62. VFD input RLA Compressor 1

0000= Data Calculated from Selection Program

63. VFD input RLA Compressor 2

0000= Data Calculated from Selection Program (always 0000 unless Code 03= D)

64. EMI Filter

E1= Filter 1 - 400A Input Current; E2= Filter 2 - 600A Input Current; XX= Special; YY= None

65. Harmonic Filter

H1= 300HP; H2= 350HP; H3= 400HP; YY= None

66. Equipment Ground Fault Detection

GF= Ground Fault Detection Relay; YY= None

67. Cabinet Type

N1= Nema 1

68. Cabinet Mounting

UM= Unit Mounted

69. Cabinet Size

C1= Large Cabinet with Transformer (2 Fan)

C2= Small Cabinet w/o Transformer

C3= Large Cabinet w/o Transformer

C4= Large Cabinet with Transformer (3 Fan)

70. Circuit Breaker Rating

04V= 380V - 480V / 400A, 100KA Breaker; 05S= 380V - 480V / 500A, 35KA Breaker; 05H= 380V - 480V / 500A, 65KA Breaker;

06S= 380V - 480V / 600A, 35KA Breaker; 06H= 380V - 480V / 600A, 65KA Breaker; 06V= 380V - 480V / 600A, 100KA Breaker;

08S= 380V - 480V / 800A, 35KA Breaker; 08H= 380V - 480V / 800A, 65KA Breaker; 08V= 380V - 480V / 800A, 100KA Breaker;

04L= 575V - 400A, 25KA Breaker; 04M= 575V - 400A, 50KA Breaker; 06L= 575V - 600A, 25KA Breaker;

06M= 575V - 600A, 50KA Breaker

71. Not a WME Code Item

YY= None

72. Not a WME Code Item

YY= None

73. VFD Output RLA / Overload Setting Compressor 1

0000= Data Calculated from Selection Program

74. VFD Output RLA / Overload Setting Compressor 2

0000= Data Calculated from Selection Program (always 0000 unless Code 03= D)

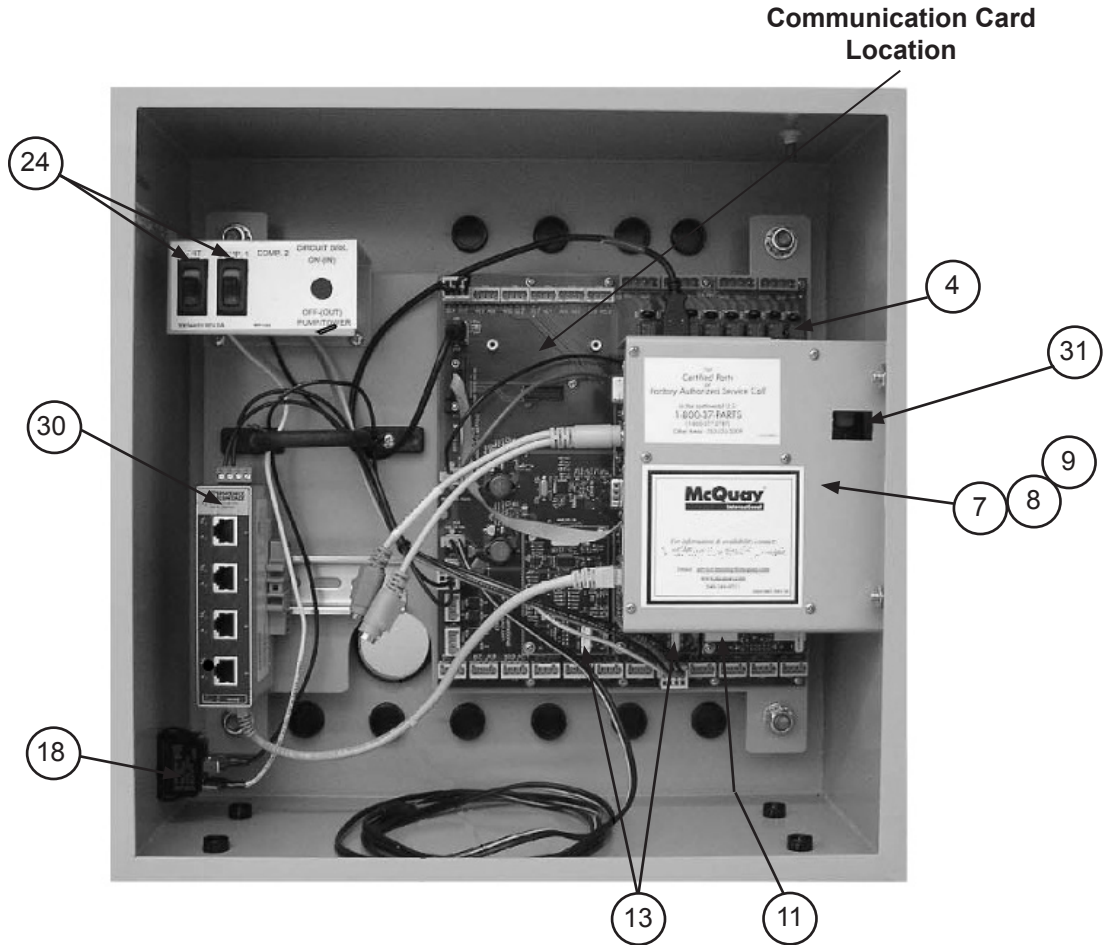
75. Starter Special

Y= None; X= Special

Electrical Legend

Sch. Sym.	Description	Location
BAS	Communication Card	Main Control Box
CB1	Circuit Breaker- TX2 Primary	VFD Power Supply Plate
CB2- 4	Circuit Breaker- Fans	VFD Power Supply Plate
CB4	Circuit Breaker- MCB Trip, Power Meter, ELR, Solenoid	VFD Power Supply Plate
CFT1- CFT2	Cooling Fan Control	VFD Power Supply Plate
CT1- 6	Current Transducers	VFD Chassis
CPU	Main Control Board	Main Control Box
D1	Diode	VFD Chassis
ES	Switch- Ethernet	Main Control Box
ELR	Relay- Earth Leakage	VFD Power Supply Plate
EMC	EMC Filter	VFD Enclosure
EXV1	Electronic Expansion Valve #1	Liquid Line
EXV2	Electronic Expansion Valve #2	Liquid Line
F1- F2	Fuse- Controls Transformer, 2A 600VAC	VFD Power Supply Plate
F3- F5	Fuse- IPS, 6A 600VAC	VFD Power Supply Plate
F6- F7	Fuse- 150VDC to DC Power Supply, 10A 600VAC	VFD Power Supply Plate
F8- F10	Fuse- Power Meter, 10A 600VAC	VFD Power Supply Plate
INPUT	I/O Board	Main Control Box
IPS	Intermediate Power Supply	VFD Enclosure
L1- 3	Chopper Chokes/Inductors	VFD Chassis
LCD	LCD Touch Screen Monitor (OITS)	Evaporator
LR	Line Reactor	VFD Enclosure
MCB	Main Circuit Breaker	VFD Enclosure
P1- P14	DC Power Distribution Terminals	VFD Power Supply Plate
PM	Power and Current Meter	VFD Power Supply Plate
PS2- PS4	Power Supply- VFD	VFD Power Supply Plate
PS5	Power Supply- Chiller I/O	VFD Power Supply Plate
PS6	Power Supply- Compressor I/O	VFD Power Supply Plate
PS7- PS8	Power Supply- Magnetic Bearings	VFD Power Supply Plate
Q1- 3	Chopper/IGBT Driver	VFD Chassis
Q4- 6	Steering Bridge IGBT	VFD Chassis
R1- 4	Resistors	VFD Chassis
S01	Sensor- Evaporator Entering Water Temperature	Evaporator Inlet
S02	Sensor- Evaporator Leaving Water Temperature	Evaporator Outlet
S04	Switch- Evaporator Entering Flow	Evaporator Inlet
S05	Sensor- Condenser Entering Water Temperature	Condenser Inlet
S06	Sensor- Condenser Leaving Water Temperature	Condenser Outlet
S07	Sensor- Condenser Refrigerant Pressure	Condenser
S08	Switch- Condenser Entering Flow	Condenser Inlet
S09	Sensor- Liquid Line Temperature	Liquid Line
S10	Sensor- Compressor Suction Temperature	Compressor
S11	Sensor- Compressor Suction Pressure	Compressor
S12	Sensor- Compressor Discharge Temperature	Compressor Discharge Housing
S13	Sensor- Compressor Discharge Pressure	Compressor Discharge Housing
S14	Sensor- Motor Gap Temperature	Compressor
S15	Switch- High Pressure	Discharge Piping
SW1	Switch- Compressor #1	Main Control Box
SW3	Switch- Remote Start/Stop	Remote Mounting
SW4	Switch- Mode	Remote Mounting
SW5	Switch- Unit Enable	Main Control Box
TDM1- 3	Diode/Thyristor Module	VFD Chassis
TS1	Thermal Switch	VFD Chassis
TH1, 2	Thermistors	VFD Chassis
TX2	Transformer- 480/240/120 VAC, 500A	VFD Power Supply Plate
VFD1	VFD Chassis Assembly	VFD Enclosure

Controls Main Control Box



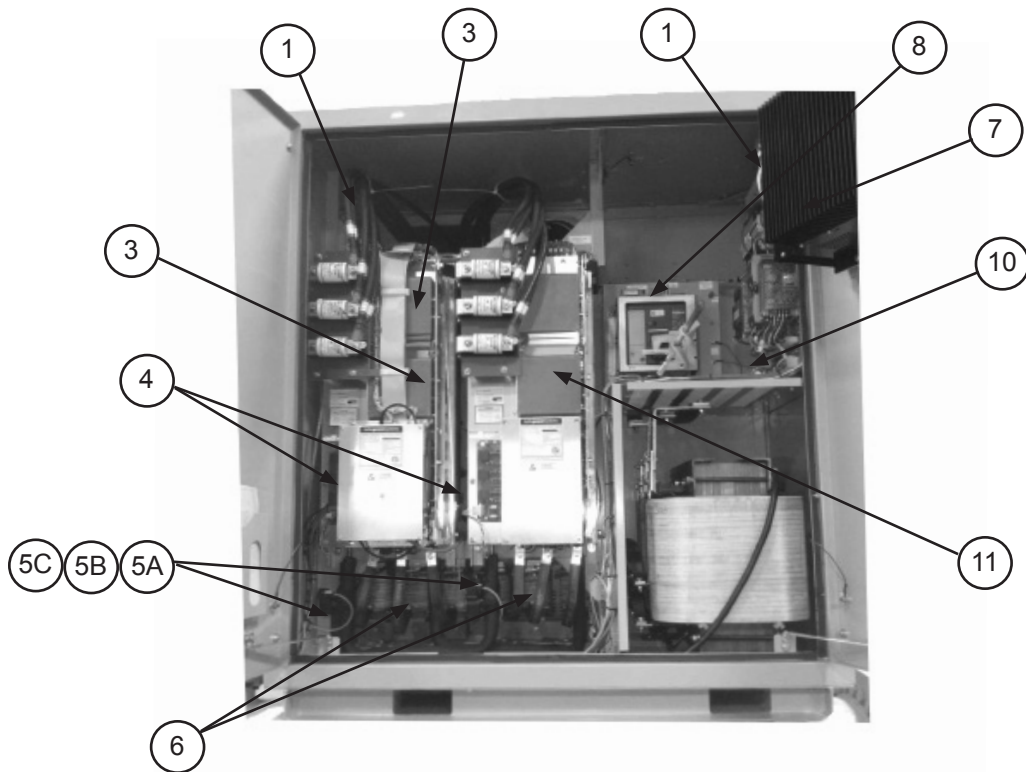
Ref. No.	Schem. Sym.	Description	Part No.	Qty.
4		Board- Chiller I/O Backplane	300047099	1
7	CPU	Board- Chiller Controller	300047102	1
N/S		Connector, Chiller Controller, Beige	300048948	21
N/S		Connector, Chiller Controller, Orange	300048949	4
8		Board- Digital I/O	333568101	1
9		Board- Analog Output	333568201	1
11		Board- IGV Stepper Motor w/o HGBP ¹	333568301	1
11		Board- IGV Stepper Motor w/ HGBP ¹	333568302	1
13		Board- Analog Input	333568401	2
18	SW5	Switch- Unit Enable	300047109	1
24	SW1	Switch- Unit and Compressor #1	300047110	2
30		Switch- Ethernet, 4-Port	300051436	1
31		USB Flash Drive, 4GB	331746501	1
N/S	BAS	BACnet MS/TP/E Installation Kit ²	332356951	1
N/S	BAS	LonMark Installation Kit ²	332356952	1
N/S	BAS	ModBus Installation Kit ²	332356953	1

N/S= Not Shown on Diagram.

¹ Note that Hot Gas Bypass (HGBP) is NOT a coded option. Refer to the HGBP section to aid in confirming the presence of the HGBP option.

² Includes the Communication Card and Installation Manual.

Controls VFD Enclosure



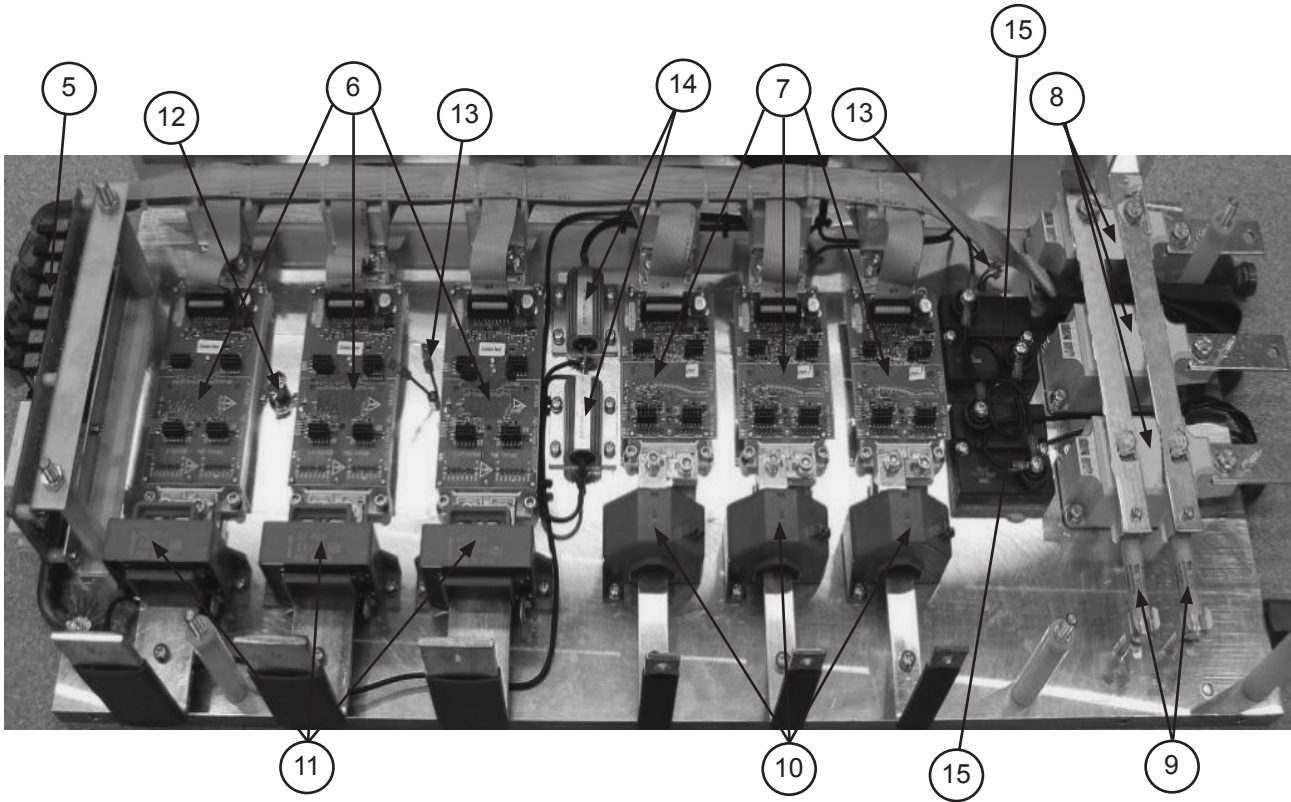
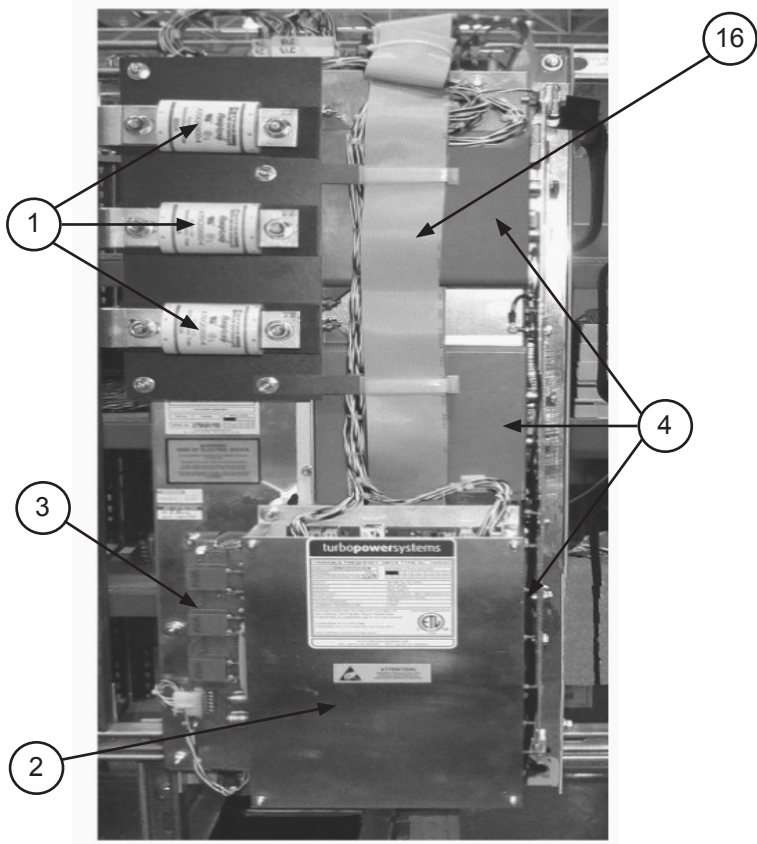
Ref. No.	Schem. Sym.	Description	Part No.	Qty.
1		Fan 120 VAC 600 CFM	300047091	2
3	VFD1	VFD Chassis Assembly- Phases 1- 3 ¹	300047093	1
4		Fuse 20A/1000VAC	300047094	2
5A		Valve- Solenoid	331796001	2
5B		Valve- Coil 120/60, 10 watt	331796051	2
5C		Repair Kit- Solenoid Valve	300052079	2
6	LR	Line Reactor 3PH	300047096	2
7	IPS	Intermediate Power Supply	300047097	1
8	MCB	CBKR Molded Case 25KAIC 600V 400A	300048927	1
		CBKR Molded Case 25KAIC 600V 600A	300048929	1
		CBKR Molded Case 35KAIC 480V 500A	300047098	1
		CBKR Molded Case 35KAIC 600V 500A	300047071	1
		CBKR Molded Case 35KAIC 600V 600A	300047100	1
		CBKR Molded Case 35KAIC 600V 800A	300048924	1
		CBKR Molded Case 50KAIC 600V 400A	300048928	1
		CBKR Molded Case 50KAIC 600V 600A	300048930	1
		CBKR Molded Case 65KAIC 600V 500A	300047088	1
		CBKR Molded Case 65KAIC 600V 600A	300047108	1
		CBKR Molded Case 65KAIC 600V 800A	300048925	1
		CBKR Molded Case 100KAIC 480V 400A	300047069	1
		CBKR Molded Case 100KAIC 480V 600A	300048923	1
		CBKR Molded Case 100KAIC 480V 800A	300048926	1
10		Surge Suppressor 480V	300047076	1
11	VFD1	VFD Chassis Assembly- Phases 4- 6 ^{1,2}	300048873	1

¹ Refer to VFD Chassis Assembly detail on the following pages.

² This chassis is present ONLY when Code 04= M3.

Controls

VFD Chassis- Diagrams



Controls

VFD Chassis- Components & Compressor Wiring Harness

VFD Chassis- Components

Ref. No.	Schem. Sym.	Description	Part No.	Qty. ¹
1		Fuse 600A, 700V	300047092	3
2		VFD Controller Assembly	300048932	1
		Backup Battery for VFD Controller	334295801	1
3		Voltage Transducer Interface Board	300048950	1
4		Link Capacitor 1200uF, 700V	300048939	3
5		Connector Interface	300048934	1
6	Q4- 6	Steering Bridge IGBT Assy.	300048937	3
7	Q1- 3	Chopper IGBT Assy.	300048936	3
8	TDM1- 3	Diode Thyristor Module	300049088	3
9		Fuse 20A, 800V	300048941	2
10	CT1- 3	Current Transducer	300048942	3
11	CT4- 6	Current Transducer	300048943	3
12	TS1	Thermal Switch	300048945	1
13	TH1, 2	Thermistor	300048944	2
14	R3, 4	Resistor 2K2, 75W	300049089	2
15	R1, 2	Resistor 150R, 250W	300048938	2
16		Wire Harness/Cable Kit ²	300055446	1
N/S	L1- 3	Chopper Chokes/Inductors	300048952	3
N/S		Thyristor Driver Board	300048933	1
N/S		Snubber Board	300048935	1
N/S		Snubber Capacitors 1uF, 1200V	300048940	6
N/S	D1	Diode	300048951	1

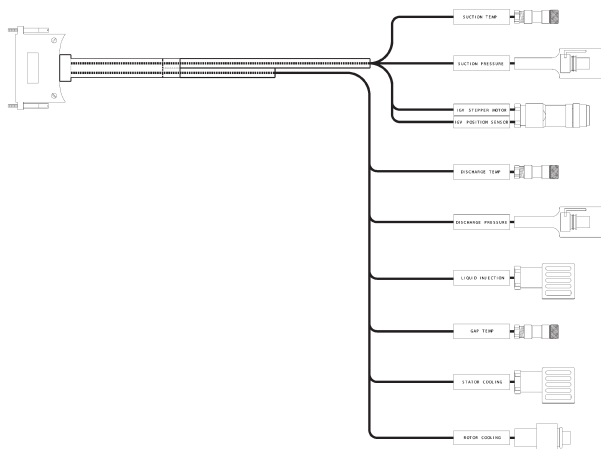
N/S= Not Shown on Diagram.

¹ Quantity PER Chassis Assembly with the exception of chassis 300048873. VFD Chassis Assembly 300048873 has no Controller (Ref. #2).

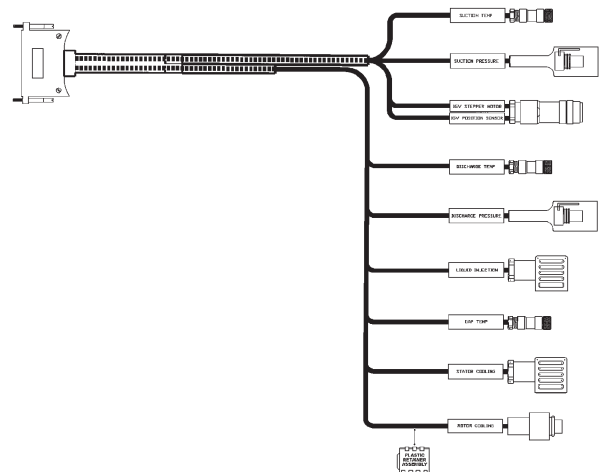
² Kit contains ribbon cables and harnesses. Connections include: Q1-J10; Q2-J11; Q3-J12; Q4-J7; Q5-J8; Q6-J9; J1-J6; and J1-J14.

Compressor Wiring Harness

Compressor Wiring Harness 331795501 ²
(12/11 & Earlier)



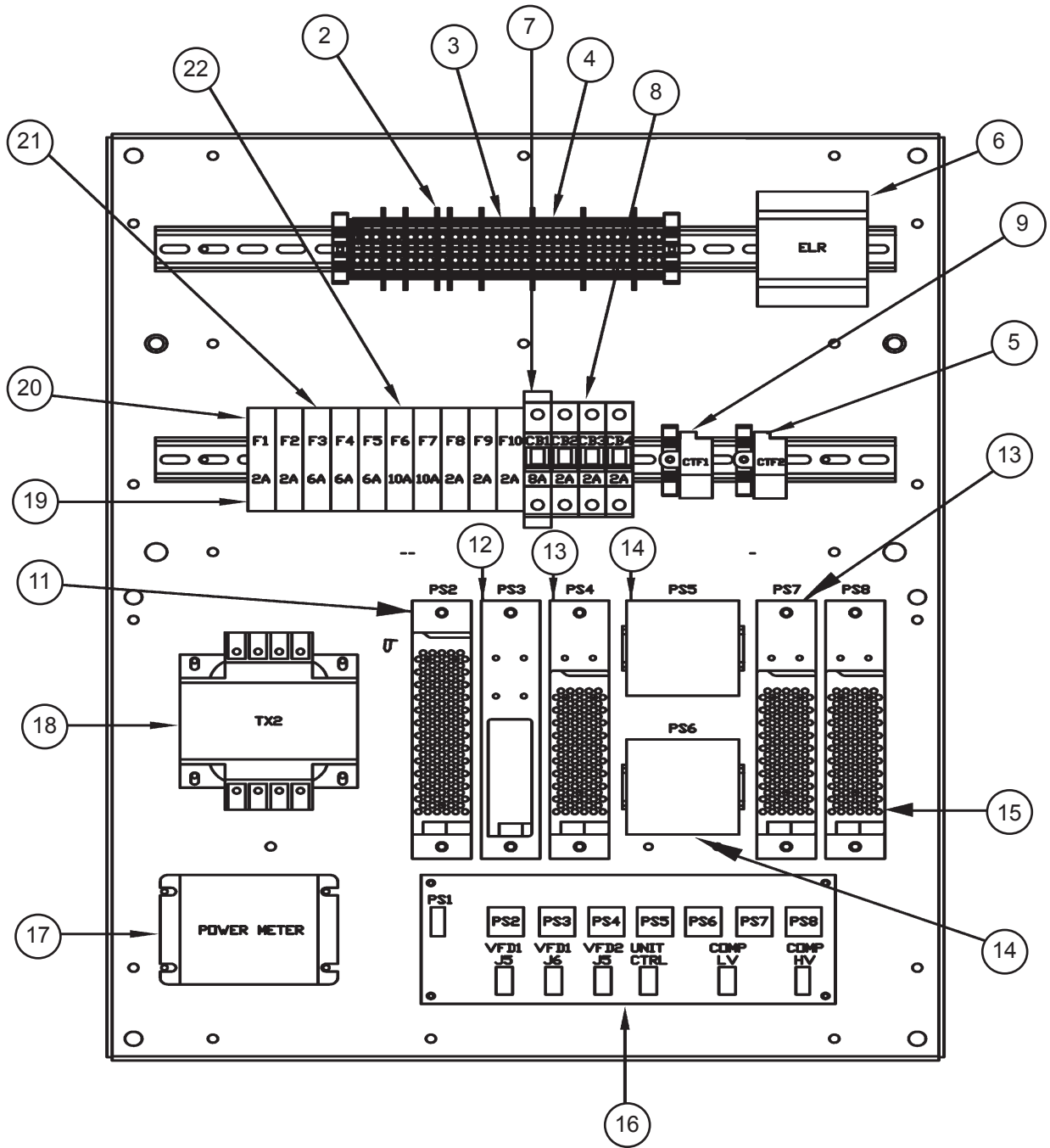
Compressor Wiring Harness 331795502 ²
(1/12 & Later)



² The Wiring Harnesses are available as complete assemblies only.

Controls

VFD Power Supply Plate- Diagram



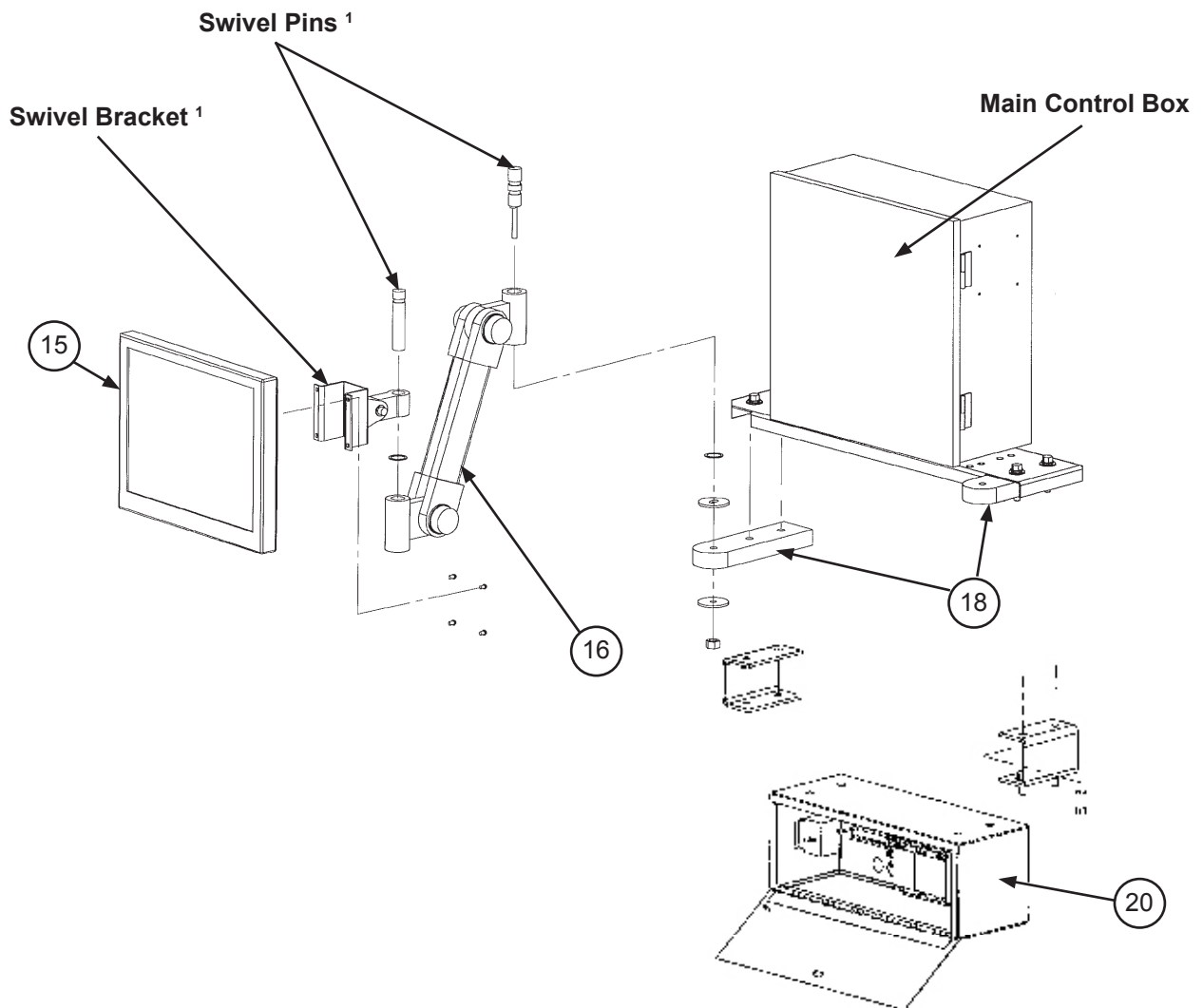
Controls

VFD Power Supply Plate- Components

Ref. No.	Schem. Sym.	Description	Part No.	Qty.
2		Plate- Partition Gray	300047073	17
3		Terminal Block Gray	300047074	36
4		Terminal Block- Ground Green-Yellow	300047075	9
5		Bracket- End, Snap on	300047190	7
6	ELR	Relay- Earth Leakage	300047078	1
7	CB1	Circuit Breaker- Primary 8A	300047079	1
8	CB2- 4	Circuit Breaker- 2 Fans & MCB trip 2A	300047080	3
9		Switch- Fan Failure	331578601	2
11		DC power supply +15 VDC 100 watts	300047081	1
12		DC power supply 15 VDC 25 watts	300047082	1
13		DC power supply +24 VDC 77 watts	300047083	2
14		DC power supply +24 VDC 100 watts	300047084	2
15		DC power supply +12 VDC 72 watts	300047085	1
16		DC Distribution Board	300047086	1
17	PM	Monitor- Voltage, Power and Current	300047087	1
18	TX2	Transformer 480/240/120V 500VA	349939804	1
19	F1- 10	Fuse holder	300047088	7
20	F1-2, F8-10	Fuse 2A	300047089	2
21	F3- 5	Fuse 6A	300047090	3
22	F6-7	Fuse 10A	300046902	2

Controls

OITS- Operator Interface Touch Screen and Rapid Restore



Ref.No.	Description	Part No.	Qty.
15	Monitor- 15" LCD Touchscreen ² 9/2010 and Before, Beige	330276501	1
	10/2010 and Later, Black	330276502	1
16	LCD Support Arm Assembly ² 9/2010 and Before, Beige	330815401	1
	10/2010 and Later, Black	330815411	1
18	OITS/Unit Control Box Support Block	330406501	2
20	Rapid Restore Kit (includes mounting brackets and hardware)	331585160	1

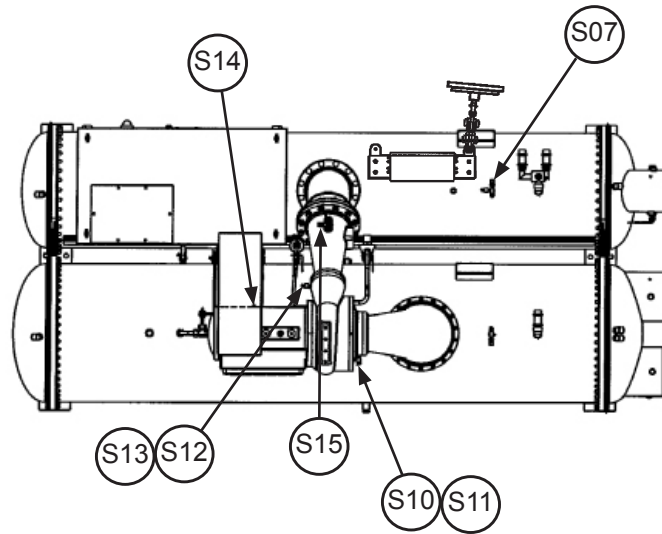
¹ These parts are included with the LCD Support Arm Assembly. The mounting hardware (screws, washers and nuts) are also included and are not available separately.

² In 9/2010 the color of the LCD Touchscreen and LCD support arm was changed from Beige to Black. Form, fit, and function are identical and parts can be substituted for each other.

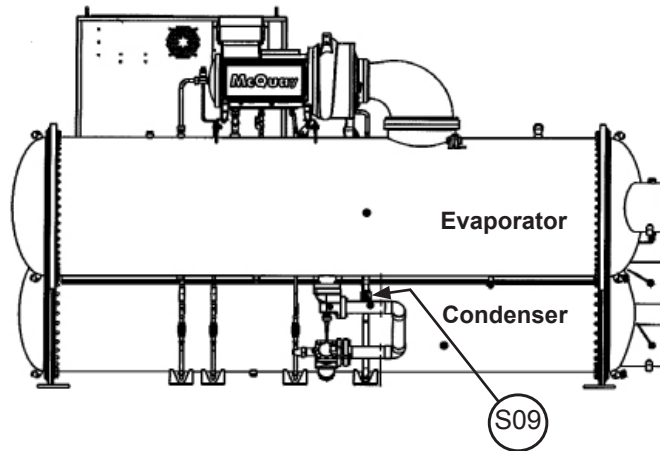
Control Sensors

087 (Rev. AAA) Impeller Units Sensor Location Diagrams

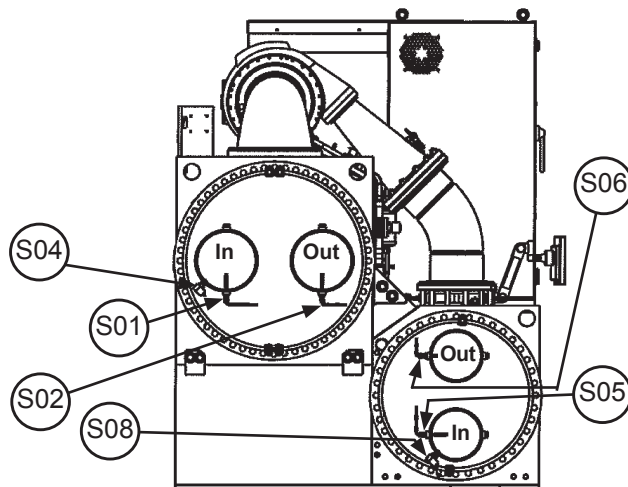
Top View



Front View

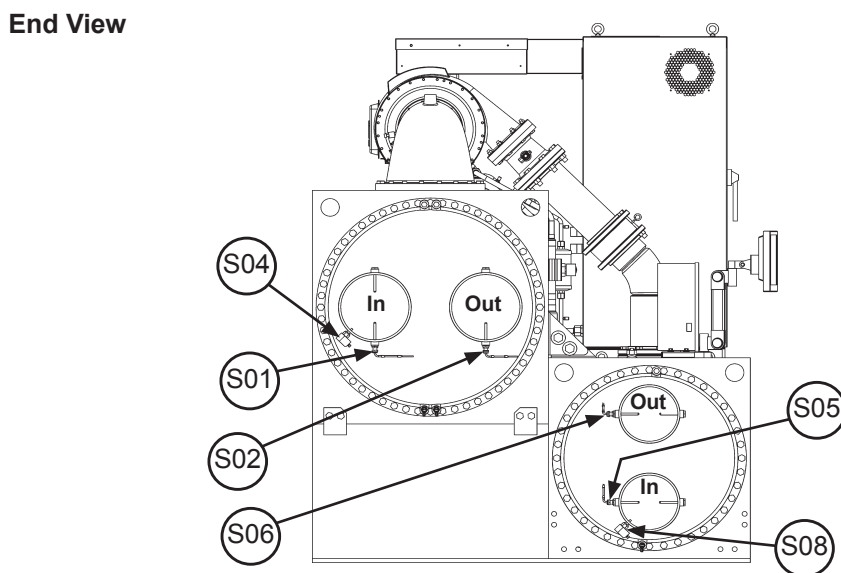
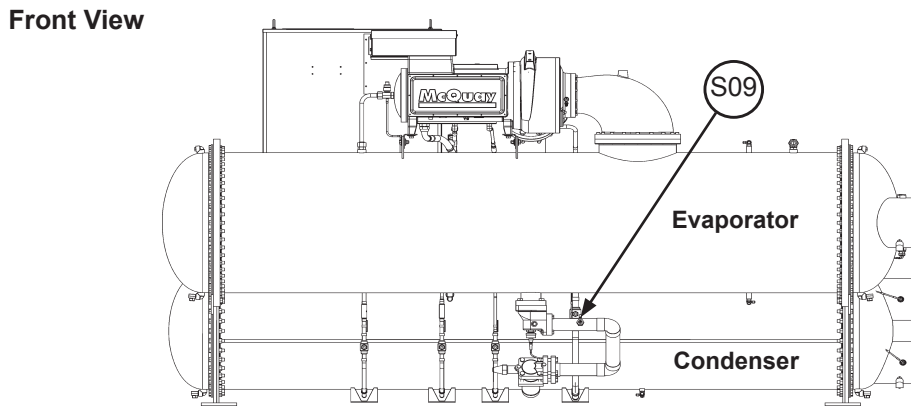
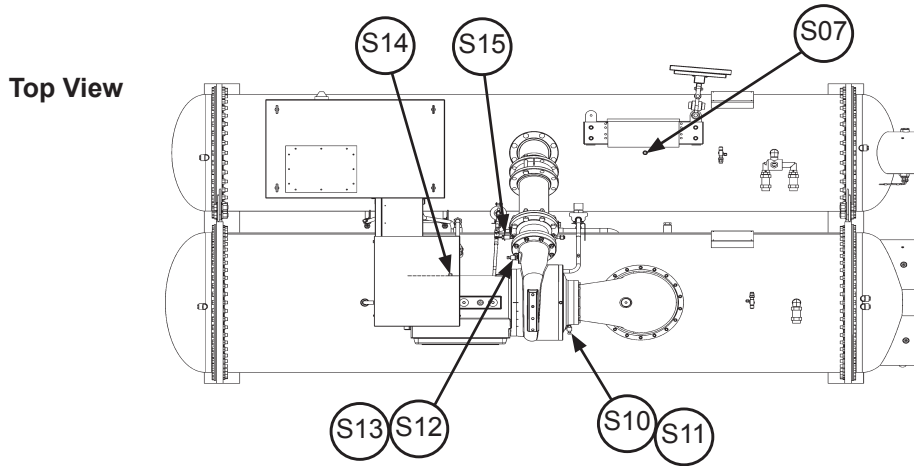


End View



Control Sensors

092 (Rev. AAB) Impeller Units Sensor Location Diagrams



Control Sensors Components

Ref. No.	Description	Part Number	Qty.
S01	Sensor- Evaporator Entering Water Temperature	073007203	1
S02	Sensor- Evaporator Leaving Water Temperature	073007203	1
S04	Switch- Evaporator Entering Flow	331796201	1
N/S	Cable- Evaporator Entering Flow Switch (5 Meter Lg.)	330571402	1
S05	Sensor- Condenser Entering Water Temperature	073007203	1
S06	Sensor- Condenser Leaving Water Temperature	073007203	1
S08	Switch- Condenser Entering Flow	331796201	1
N/S	Cable- Condenser Entering Flow Switch (5 Meter Lg.)	330571402	1
S09	Sensor- Liquid Line Temperature	073007203	1
S10	Sensor- Compressor Suction Temperature	331795201 ^{1, 2}	1
S12	Sensor- Compressor Discharge Temperature	331795201 ^{1, 2}	1
S14	Sensor- Motor Gap Temperature	331795205 ²	1
S15	Switch- High Pressure	074796301	1

N/S= Not Shown on Diagram.

¹ Early production units used sensor 331795205. This sensor is 6.0" OAL. P/N 331795201 is 4.38" OAL. Confirm which sensor is required before ordering.

² The Cable for this Sensor is part of the Compressor Wiring Harness and is NOT available separately. Refer to the Compressor Wiring Harness section for harness p/ns.

Ref. No.	Description	Part Number	Qty.
Transducers for units built through August 2017 *			
S11	Transducer- Low Pressure	071568521	1
S07, S13	Transducer- High Pressure	071568621	2
N/S	Cable for Transducers, 10 ft. (includes Boot)	074667501	3
N/S	Cable for Transducers, 16 ft. (includes Boot)	074667502	3
N/S	Cable for Transducers, 20 ft. (includes Boot)	074667503	3
N/S	Cable for Transducers, 25 ft. (includes Boot)	074667504	3
N/S	Boot for Transducer Cable (black)	071583301	3
Transducers for units built beginning September 2017 *			
S11	Transducer- Low Pressure	333992031	1
S07, S13	Transducer- High Pressure	333992032	2
N/S	Cable for Transducers, 10 ft. (includes Boot)	910217971	3
N/S	Cable for Transducers, 16 ft. (includes Boot)	910217972	3
N/S	Cable for Transducers, 20 ft. (includes Boot)	910217973	3
N/S	Cable for Transducers, 25 ft. (includes Boot)	910217974	3
N/S	Boot for Transducer Cable (blue)	335657201	3

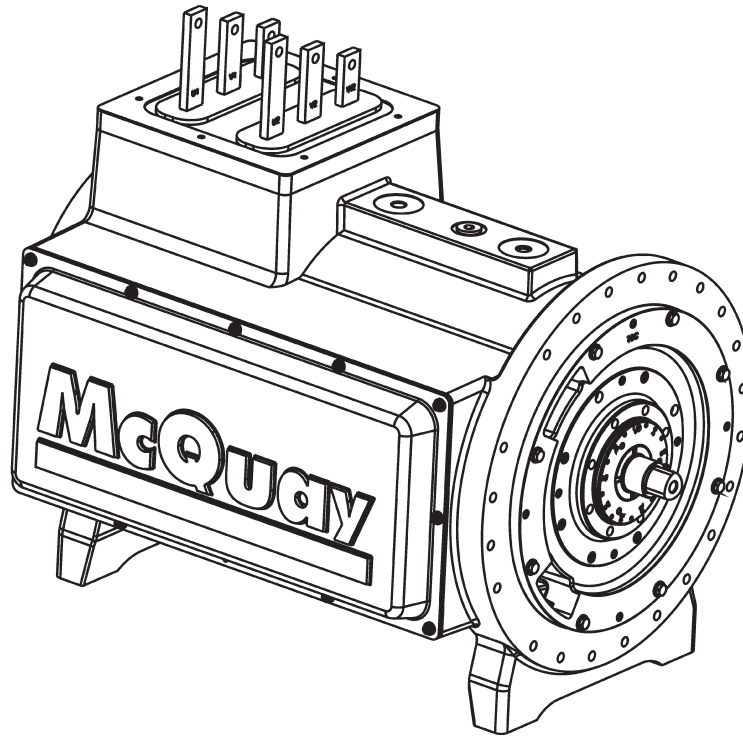
N/S = Not Shown on diagram

* For units built in August 2017, check the color of the Transducer Cable Boot.

If Boot is black, use the parts above for "through August 2017". If Boot is blue, use the parts above for "beginning September 2017".

Compressor

Motor/Bearing Assemblies ¹

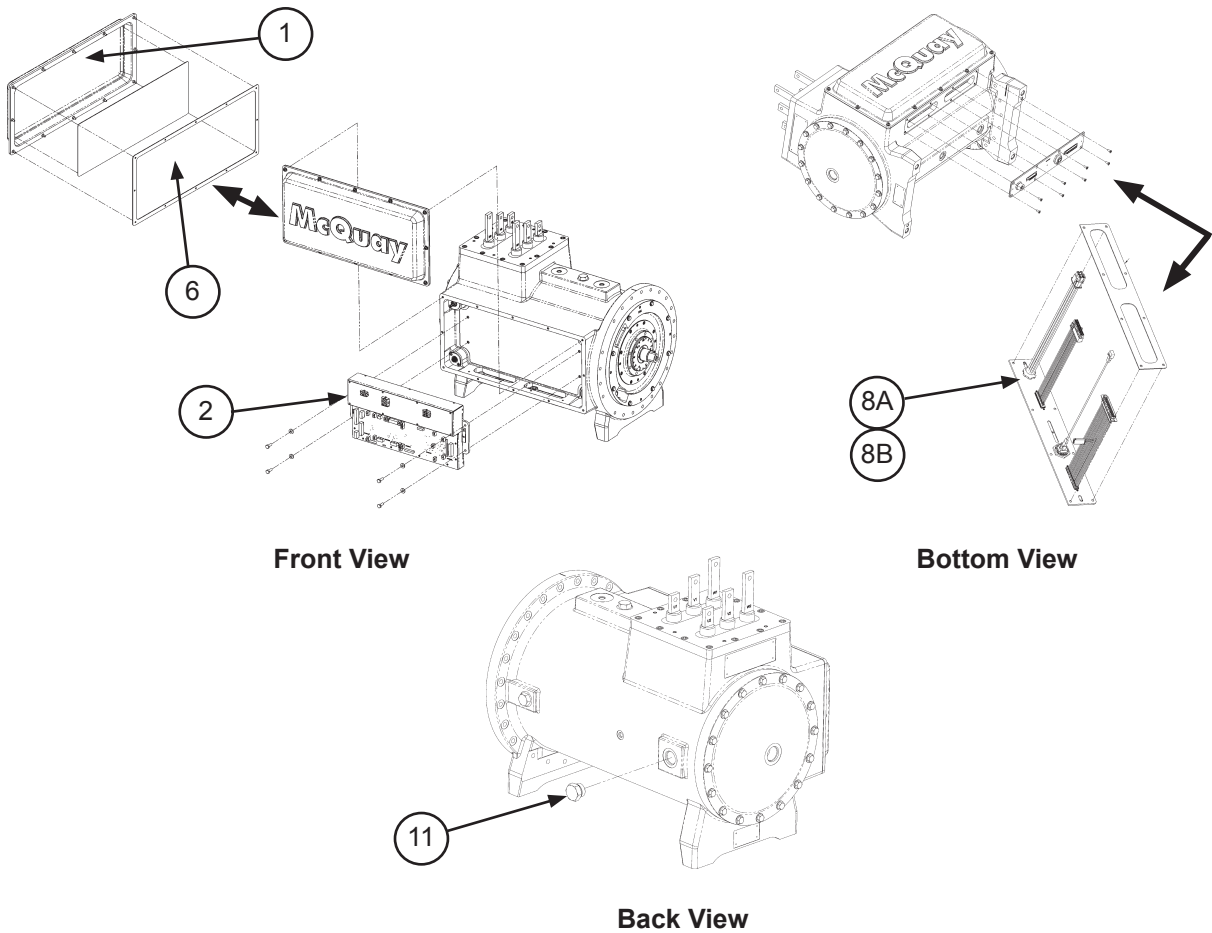


Part No.	Description	Application Voltage
331799233	MBAW3/3 (Code 04= M2)	440 - 575V
331799216	MBAW1/6 (Code 04= M3)	380 - 575V

¹ Compressor Magnetic Bearing, Rotor, and Stator components are not field replaceable. If replacement is required, the entire assembly must be replaced. For Compressor Motor/Bearing Assembly field serviceable components see the following page.

Compressor

Motor/Bearing Assembly Components



Ref. No.	Description	Part No.	Qty.
1	Kit- Electronics Cover Assy. ¹	300047066	1
2	Controller Module- Compressor	300047067	1
6	Kit- Electronics Cover Gasket ²	300047068	1
8A	Kit- Connector Plate with Gasket	300047070	1
8B	Kit- Connector Plate with Gasket & 3 Cables	300055102	1
11	Plug- Hex Head	300047072	1

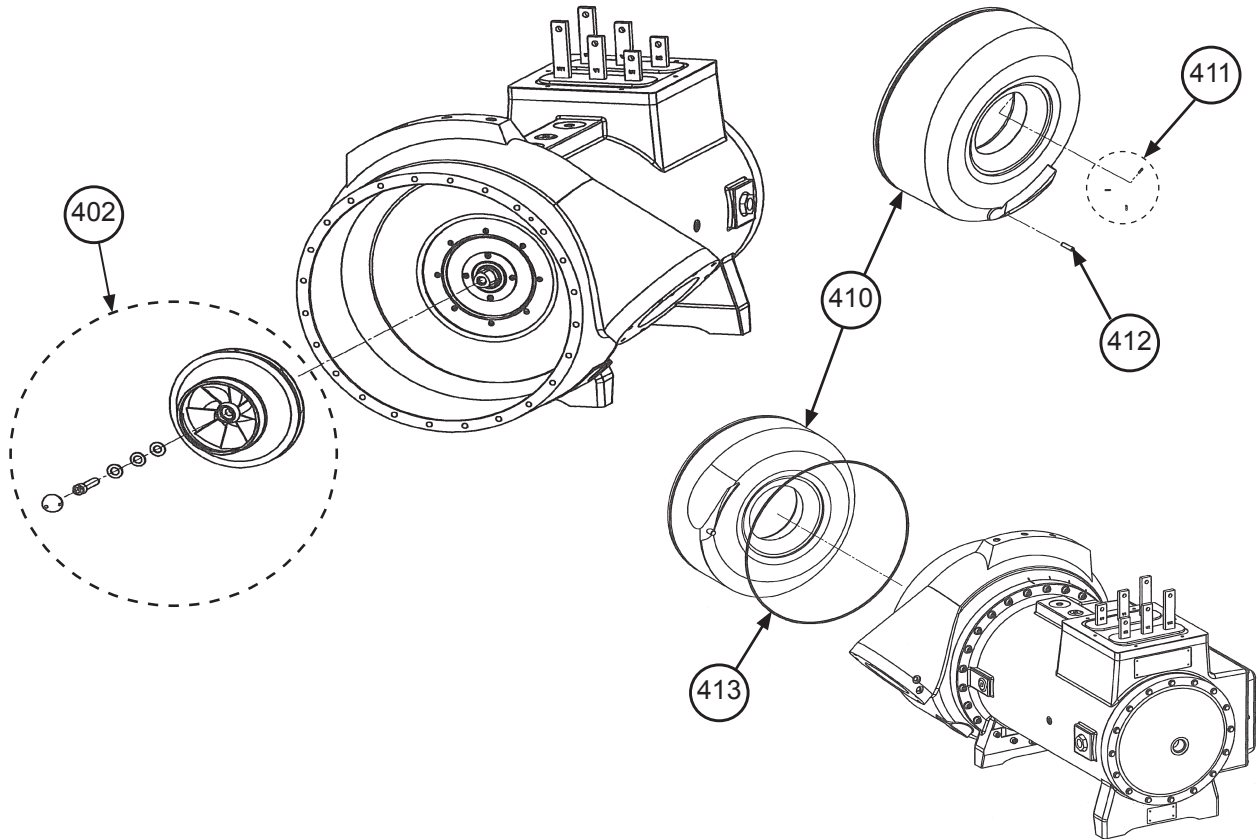
¹ Kit includes Cover, Gasket & Insulator.

² Kit includes Gasket & Insulator. Included in Electronics Cover Assy Kit 300047066.

Compressor

087 Impeller- (Compressor Revision/Code 07= AAA)

Impeller Assembly



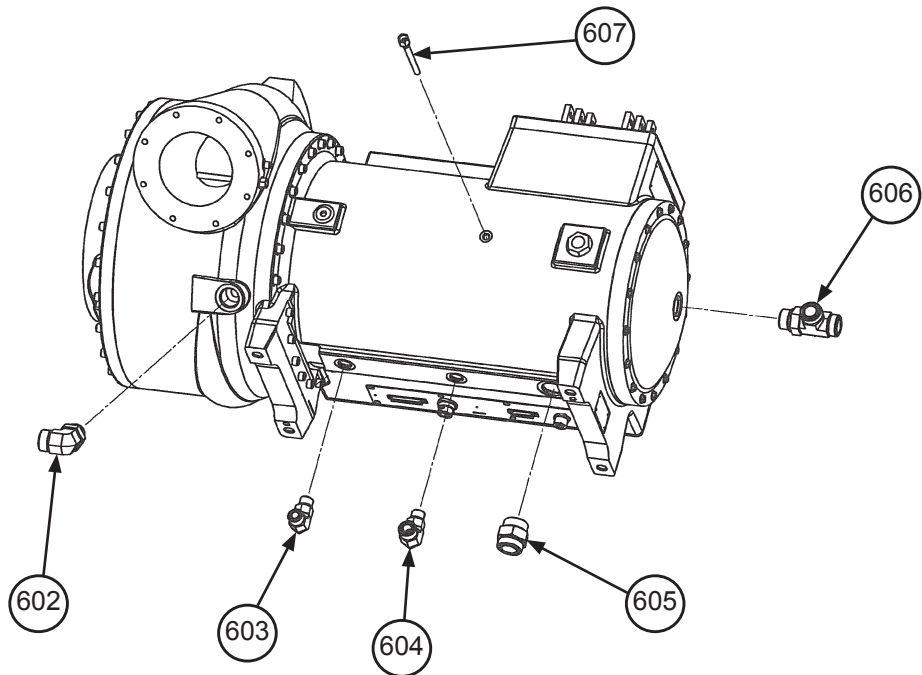
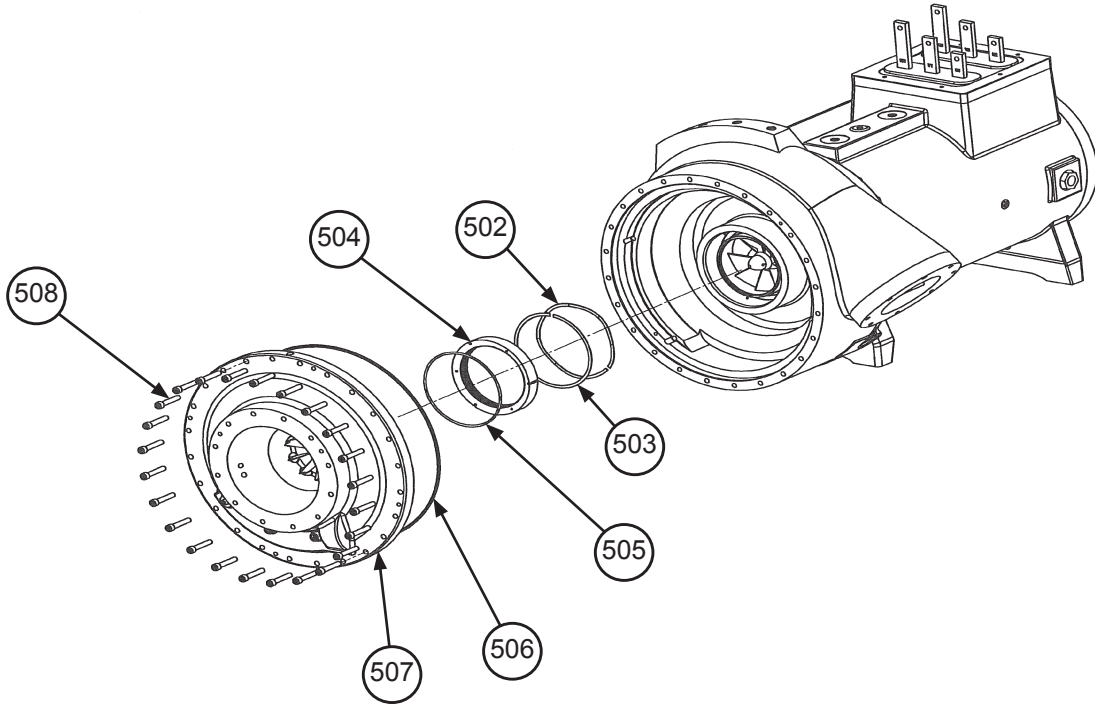
Ref. No.	Description	Part No.	Qty.
402	Impeller Assembly ¹	331347201	1
410	Volute Insert	331350904	1
411	Pin- Volute, Roll .094 x .50"	735038039	3
412	Pin- Volute, Dowel .312 x 1.125"	735038026	1
413	O-Ring ²	070194999	1

¹ Available as an assembly only.

² Included in Compressor O-Ring Kit p/n 300049072.

Compressor

087 Impeller- (Compressor Revision/Code 07= AAA) Impeller Seal & Compressor Fittings- Diagrams



Compressor

087 Impeller- (Compressor Revision/Code 07= AAA) Impeller Seal & Compressor Fittings- Components

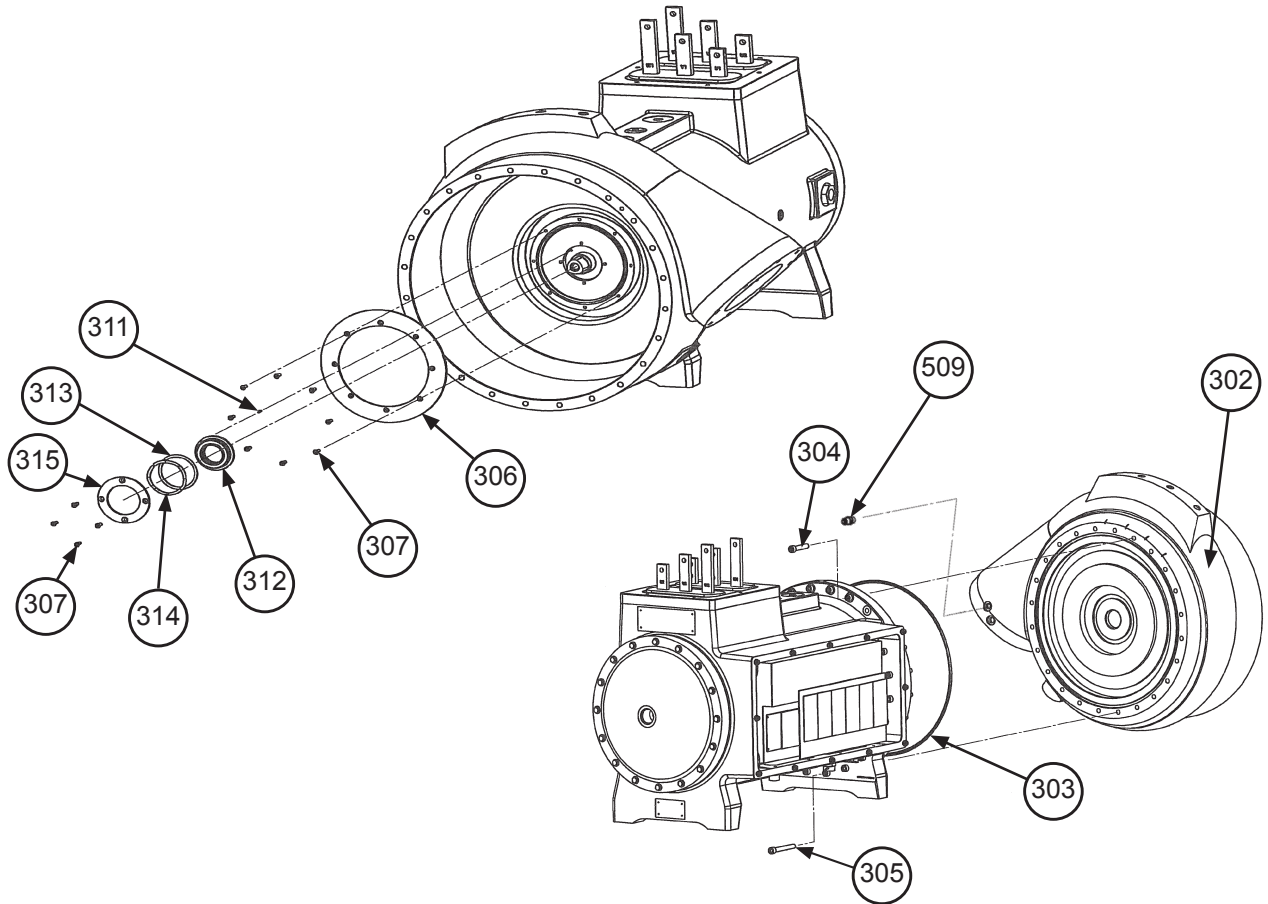
Ref. No.	Description	Part No.	Qty.
502	Spring- Wave	735049888	1
503	Shim- Impeller Seal	735049889	1
504	Seal- Impeller	331499801	1
505	O-Ring ²	735073671	1
506	O-Ring ²	070194999	1
507	Inlet Assembly	331350802	1
508	Screw, Stainless Steel 3/8-16 x 2.0"	331353705	24
602	Fitting- Elbow	332471617	1
	O-Ring, ORFS ¹	070194968	1
	O-Ring, SAE ¹	070194980	1
603	Orifice Assembly .187" Dia.	331346501	1
604	Fitting- Elbow	070789368	1
	O-Ring, ORFS ¹	735073640	1
	O-Ring, SAE ¹	735073625	1
605	Fitting- Straight	070789383	1
	O-Ring, ORFS ¹	300047193	1
	O-Ring, SAE ¹	070194970	1
606	Fitting- Tee	070789392	1
	O-Ring, ORFS ¹	070194968	2
	O-Ring, SAE ¹	070194980	1
607	Well- Temperature Sensor	331795204	1

¹ O-Rings are furnished standard with all fittings. Order additional O-Rings if needed. ORFS Style O-Rings seat on the face end of the fitting. SAE style O-Rings seat at the base of the fitting.

² Included in Compressor O-Ring Kit p/n 300049072.

Compressor

087 Impeller- (Compressor Revision/Code 07= AAA) Discharge Housing & High Speed Shaft Seal



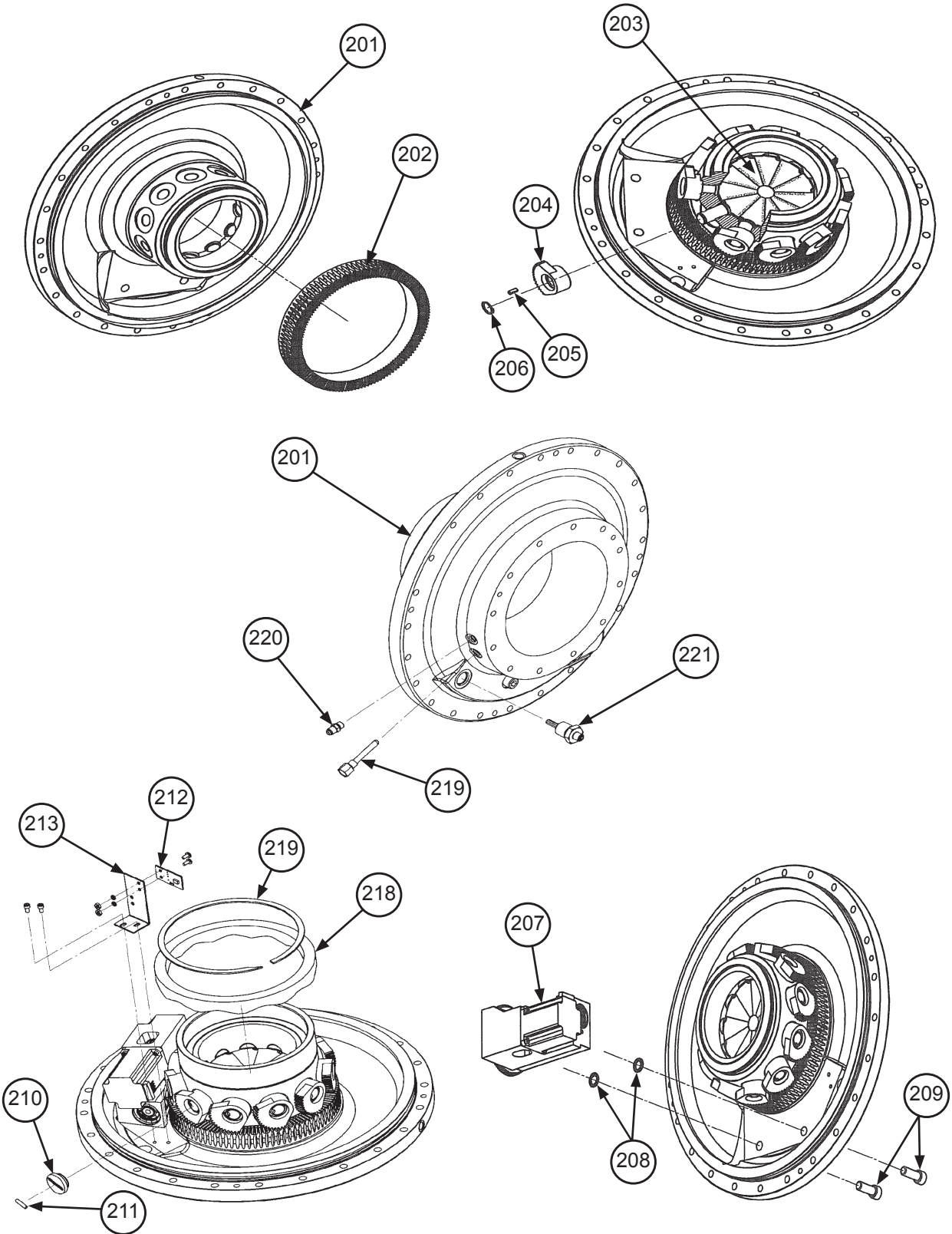
Ref. No.	Description	Part No.	Qty.
302	Discharge Housing	331351004	1
303	O-Ring ¹	070194978	1
304	Screw, Stainless Steel #.38-16 x 2.0"	331353705	12
305	Screw, Stainless Steel #.38-16 x 3.0"	331353706	6
306	Ring- Liquid Injection	331353401	1
307	Screw #10 x .50"	735034921	12
311	Pin .50 x .09"	735038039	1
312	Seal- High Speed Shaft 1.5"	331351101	1
313	Shim- High Speed Shaft Seal	331347501	1
314	Spring- Wave, High Speed Shaft	735049886	1
315	Retainer- High Speed Shaft Seal	331353301	1
509	Valve- Access	070229306	1

¹ Included in Compressor O-Ring Kit p/n 300049072.

Compressor

087 Impeller- (Compressor Revision/Code 07= AAA)

Inlet Assembly- Diagrams



Compressor

087 Impeller- (Compressor Revision/Code 07= AAA)

Inlet Assembly- Components

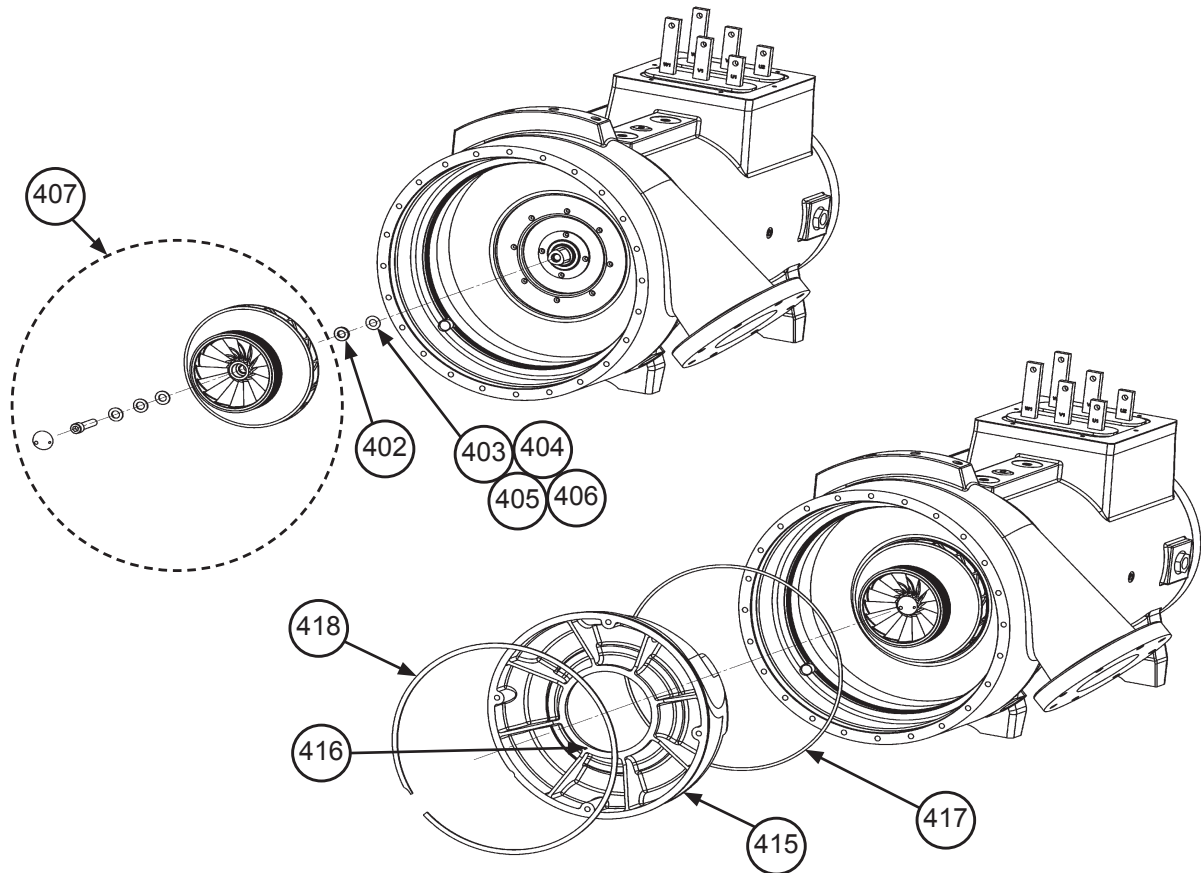
Ref. No.	Description	Part Number	Qty.
201	Inlet Housing	331351202	1
202	Gear- Face	331352301	1
203	Inlet Vane	331352601	11
204	Gear- Spur	331352401	11
205	Key- Spur Gear .188 x .50"	735023804	11
206	Ring- Retaining Spur Gear	735049890	11
207	IGV Actuator Assembly, Complete	331350801	1
208	O-Ring ¹	070194996	2
209	Screw- Stainless Steel .50-13 x 1.50"	331353704	2
210	Plug- Sensor Magnet	331353501	1
211	Magnet	331353802	1
212	Sensor	331352831	1
213	Bracket- Sensor	331352701	1
218	Ring- Vane Stop	331352901	1
219	Well- Temperature Sensor	331795202	1
220	Valve- Acess	070229306	1
221	Connector- Male 8 Pole	331795401	1

¹ Included in Compressor O-Ring Kit p/n 300049072.

Compressor

092 Impeller- (Compressor Revision/Code 07= AAB)

Impeller Assembly



Ref. No.	Description	Part No.	Qty.
402	Washer- Impeller	735043467	1
403- 406	Kit- Shim Washers, Impeller ¹	300049084	1
407	Impeller Assembly ²	331347202	1
415	Volute Insert	331498002	1
416	Pin- Volute Insert .50 x .09"	735038039	1
417	O-Ring ³	330198639	1
418	Ring- Retaining	735049893	1

¹ The shim combination is unique to each compressor. The kit contains quantities of four shim sizes.

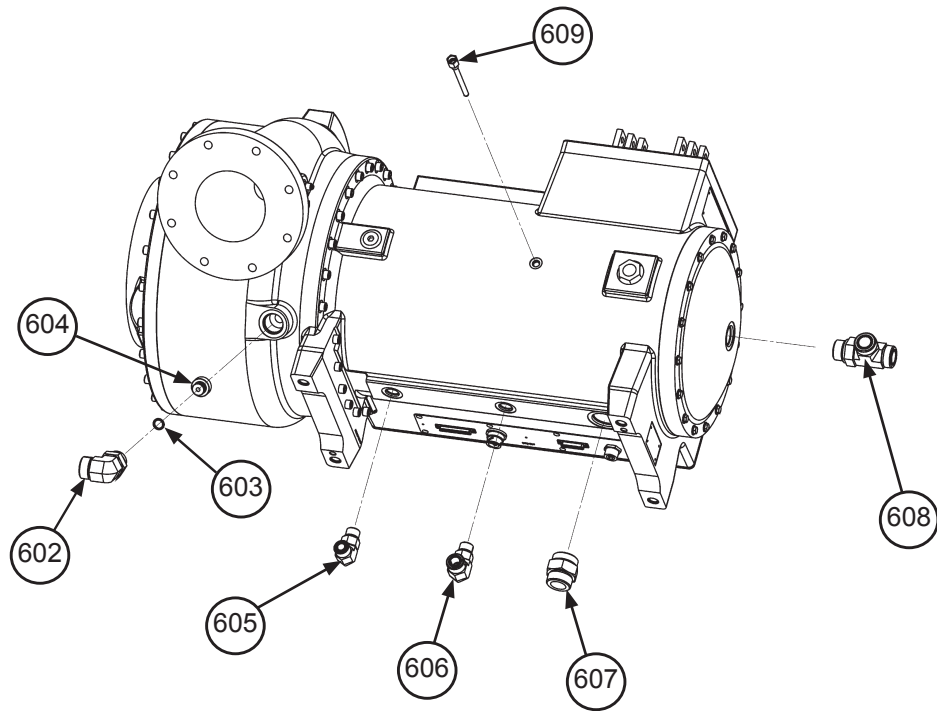
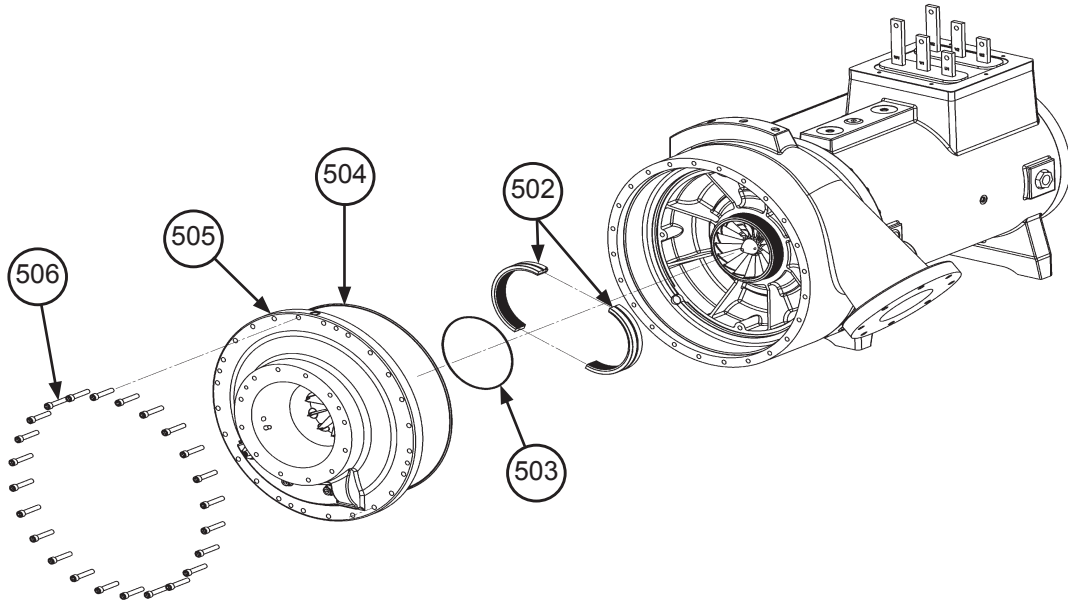
² Available as an assembly only.

³ Included in Compressor O-Ring Kit p/n 300049071.

Compressor

092 Impeller- (Compressor Revision/Code 07= AAB)

Impeller Seal & Compressor Fittings- Diagrams



Compressor

092 Impeller- (Compressor Revision/Code 07= AAB) Impeller Seal & Compressor Fittings- Components

Ref. No.	Description	Part No.	Qty.
502	Seal- Impeller (1 pair)	332026501	1
503	O-Ring ³	735043645	1
504	O-Ring ³	070194999	1
505	Inlet Assembly, Complete ⁴		
	3/12 & Before	331584402	1
	4/12 & Later	331584412	1
506	Screw, Stainless Steel 3/8-16 x 2.0"	331353705	24
602	Fitting- Elbow	332471617	1
	O-Ring, ORFS ¹	070194968	1
	O-Ring, SAE ¹	070194980	1
603	O-Ring	070194951	1
604	Orifice Insert ²	331553601	1
605	Fitting- Elbow	070789307	1
	O-Ring, ORFS ¹	735073650	1
	O-Ring, SAE ¹	735073625	1
606	Fitting- Elbow	070789368	1
	O-Ring, ORFS ¹	735073640	1
	O-Ring, SAE ¹	735073625	1
607	Fitting- Straight	070789383	1
	O-Ring, ORFS ¹	300047193	1
	O-Ring, SAE ¹	070194970	1
608	Fitting- Run Tee	070789392	1
	O-Ring, ORFS ¹	070194968	2
	O-Ring, SAE ¹	070194980	1
609	Well, Temperature Sensor	331795204	1

¹ O-Ring(s) are furnished standard with all fittings. Order additional O-Rings if needed. ORFS Style O-Rings seat on the face end of the fitting. SAE style O-Rings seat at the base of the fitting.

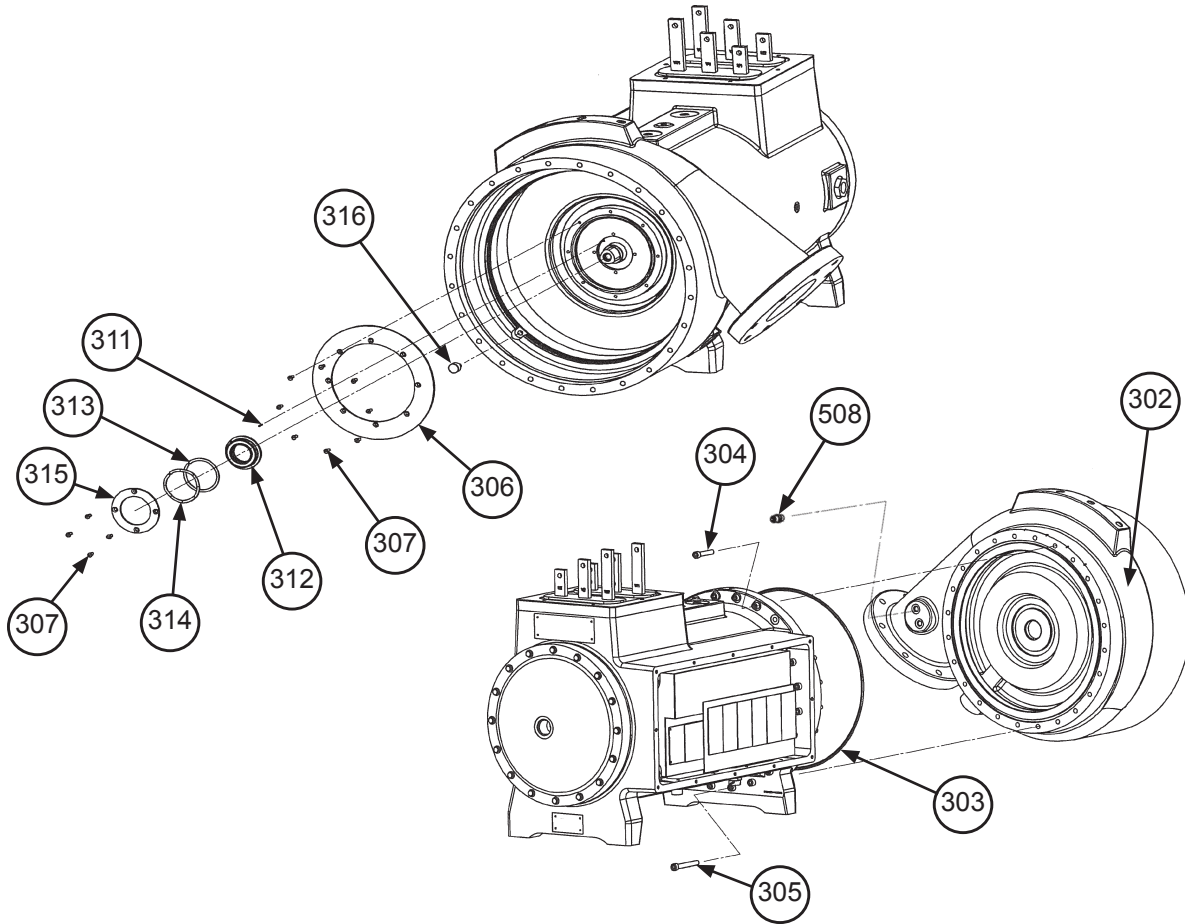
² This part was used in early production units only. Later units have this part integrated into Discharge Housing p/n 331497904. Confirm which Discharge Housing is installed before ordering this part.

³ Included in Compressor O-Ring Kit p/n 300049071.

⁴ For Inlet Assembly Components, refer to the Inlet Assembly Section.

Compressor

092 Impeller- (Compressor Revision/Code 07= AAB) Discharge Housing & High Speed Shaft Seal



Ref. No.	Description	Part No.	Qty.
302	Discharge Housing	331497902 ¹	1
	Discharge Housing	331497904	1
303	O-Ring ²	070194978	1
304	Screw, Stainless Steel #.38-16 x 2.0"	331353705	12
305	Screw, Stainless Steel #.38-16 x 3.0"	331353706	6
306	Ring- Liquid Injection	331583901	1
307	Screw #10 x .50"	735034921	12
311	Pin .50 x .09"	735038039	1
312	Seal- High Speed Shaft 1.5"	331351101	1
313	Shim- High Speed Shaft Seal	331347501	1
314	Spring- Wave, High Speed Shaft	735049886	1
315	Retainer- High Speed Shaft Seal	331353301	1
316	Pin- Locator	331584501	1
508	Valve- Access	070229306	1

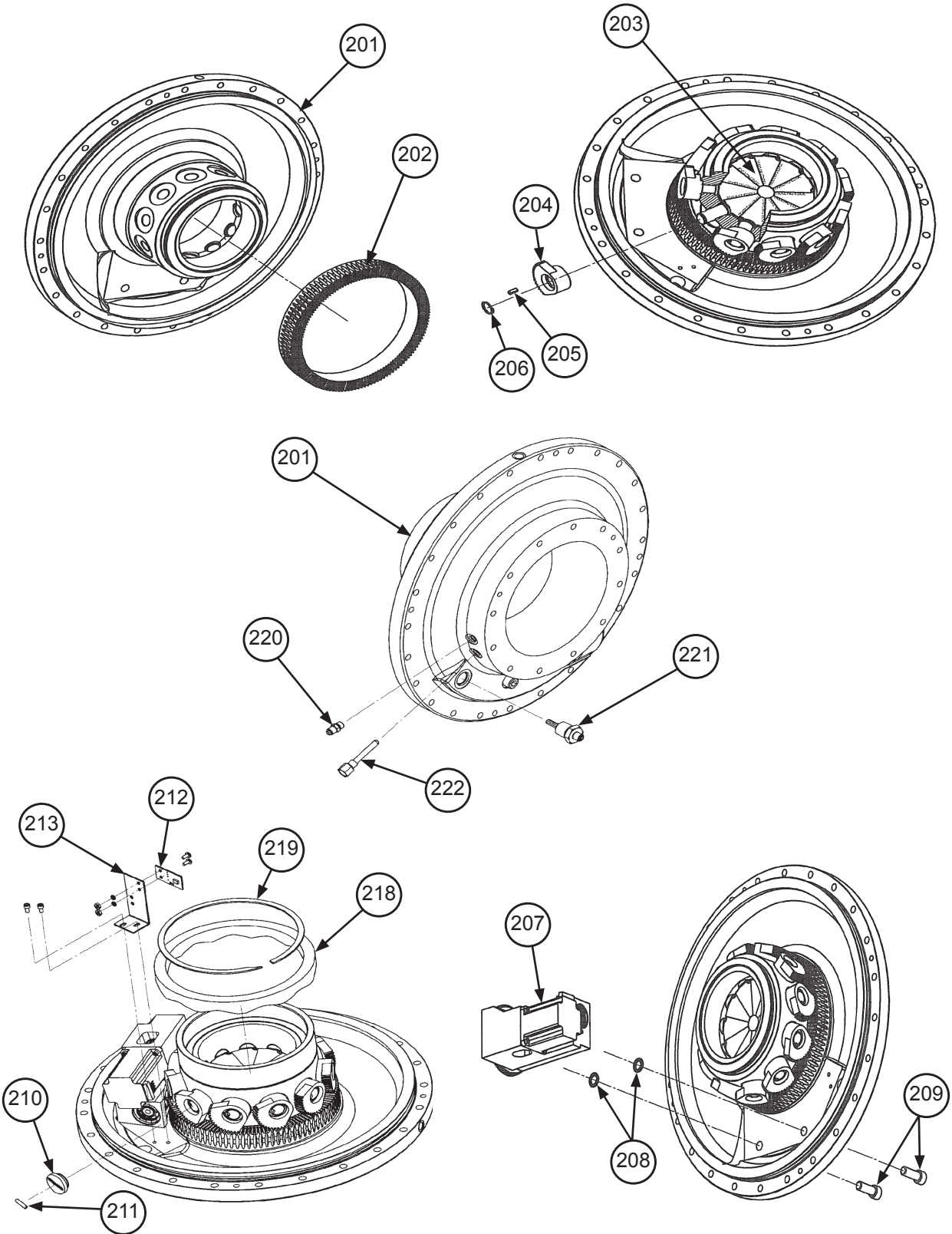
¹ This part was used in early production units only. This housing uses a separate Orifice Insert p/n 331553601. Later units use Discharge Housing p/n 331497904 which has the Orifice integrated into the housing. Confirm which Discharge Housing is installed before ordering this part.

² Included in Compressor O-Ring Kit p/n 300049071.

Compressor

092 Impeller- (Compressor Revision/Code 07= AAB)

Inlet Assembly- Diagrams



Compressor

092 Impeller- (Compressor Revision/Code 07= AAB)

Inlet Assembly- Components

Ref. No.	Description	Part Number	Qty.
201	Inlet Housing	331583702	1
202	Gear- Face ²		
	3/12 & Before	331352301	1
	4/12 & Later	331438301	1
203	Inlet Vane	331352602	11
204	Gear- Spur ²		
	3/12 & Before	331352402	11
	4/12 & Later	331438202	11
205	Pin- Spur Gear .313 x .58"	735038065	11
206	Ring- Retaining Spur Gear	735049890	11
207	IGV Actuator Assembly, Complete	331584401	1
208	O-Ring ¹	070194996	2
209	Screw- Stainless Steel .50-13 x 1.50"	331353704	2
210	Plug- Sensor Magnet ²		
	3/12 & Before	331353501	1
	4/12 & Later	331438401	1
211	Magnet	331353802	1
212	Sensor	331352831	1
213	Bracket- Sensor	331352701	1
218	Ring- Vane Stop ²		
	3/12 & Before	331352901	1
	4/12 & Later	331438101	1
219	Ring- Retaining Vane Stop	735049892	1
220	Valve- Access	070229306	1
221	Connector- Male 8 Pole	331795401	1
222	Well- Temperature Sensor	331795202	1

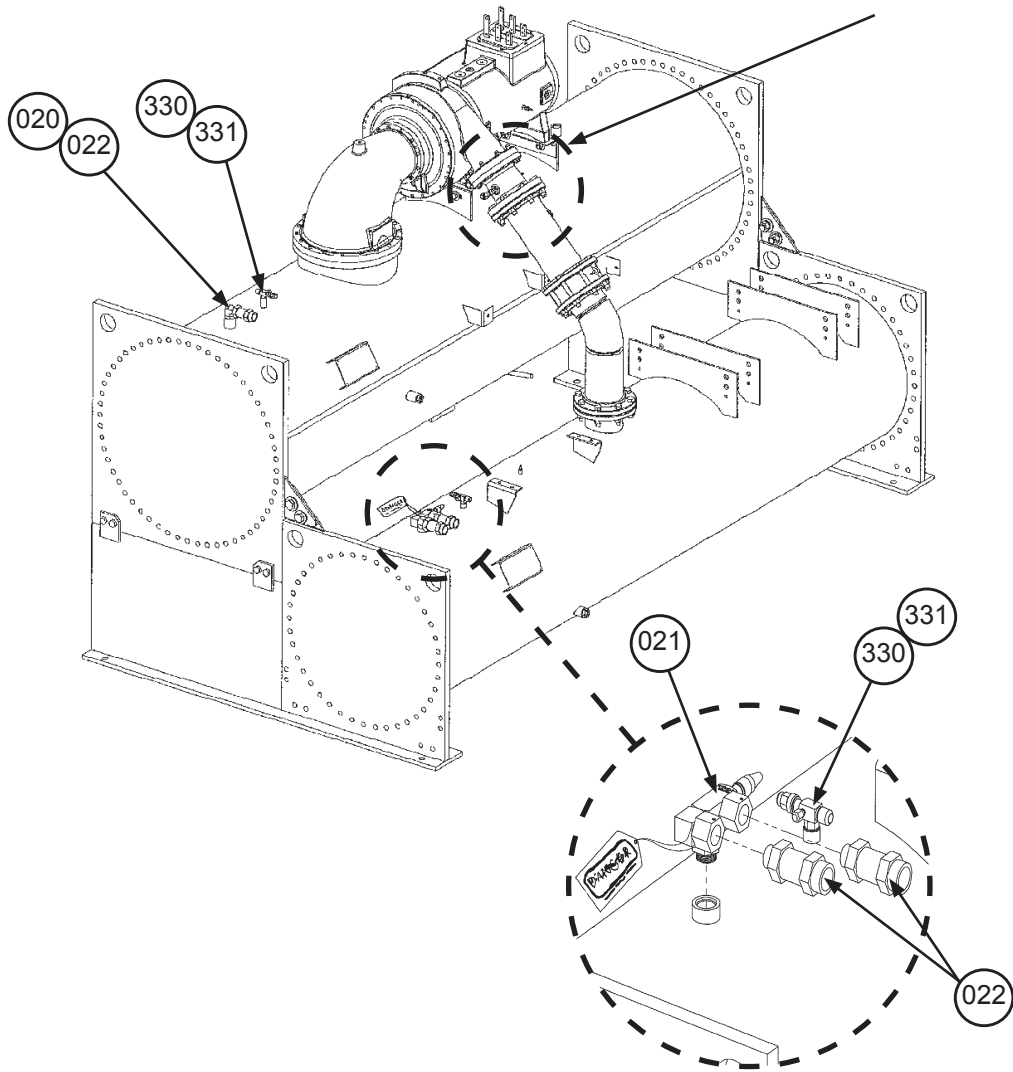
¹ Included in Compressor O-Ring Kit p/n 300049071.

² Old and new parts are NOT interchangeable. If original parts are NOT available, ALL footnote #2 noted parts must be replaced.

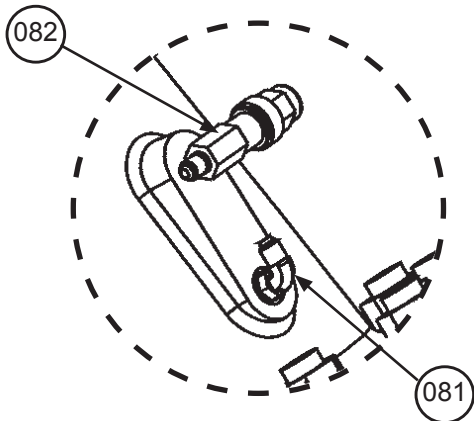
Unit Assembly

Relief & Shutoff Valves- Diagrams

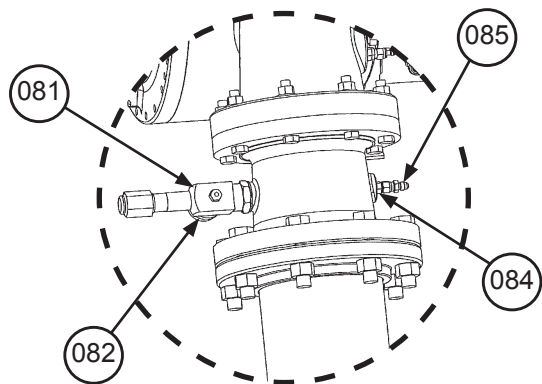
See Details Below



087 Impeller Unit Detail



092 Impeller Unit Detail



Unit Assembly Relief & Shutoff Valves- Components

Ref. No.	Description	Part No.	Qty.
020	Fitting- 90 Degree Street Elbow, 087 Impeller	735031239	1
020	Fitting- 90 Degree Elbow, 092 Impeller	332471635	1
	O-Ring ¹	070194963	1
021	Valve- Shut Off ³	735039964	1
	O-Ring, SAE ¹	070194980	1
022	Valve- Relief 200#	735045817	3
081	Fitting- 90 Degree Elbow 087 Impeller	735043923	1
	O-Ring ¹	735073623	1
081	Valve- Angle 092 Impeller	332471751	1
082	Valve- Shut Off 087 Impeller	735039947	1
082	Cap- Tube End 092 Impeller	070789347	1
084	Fitting	735043930	1
	O-Ring ¹	070194948	1
085	Fitting- Swivel	735043954	1
330	Valve- Shut Off	2	2
331	Cap- Shut Off Valve	2	2

¹ O-Ring(s) are furnished standard with all fittings. Order additional O-Rings if needed. ORFS Style O-Rings seat on the face end of the fitting. SAE style O-Rings seat at the base of the fitting.

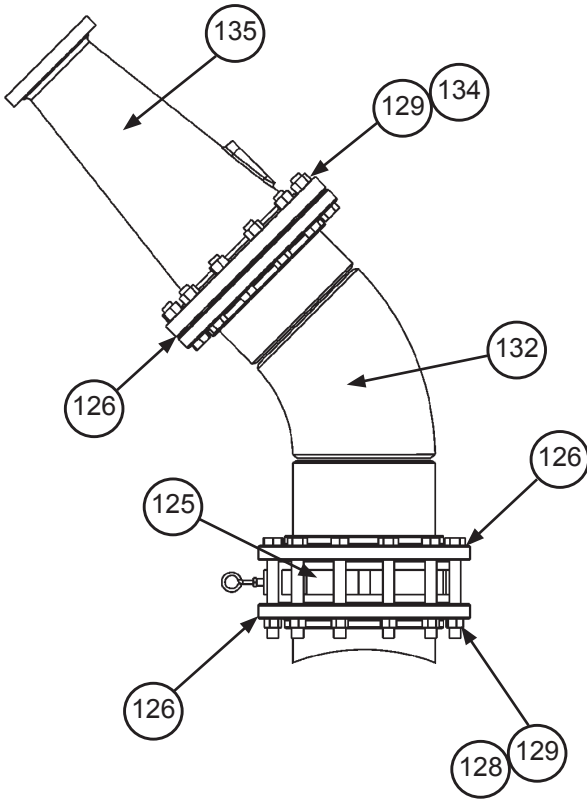
² Refer to the Condenser and Evaporator sections for p/ns and quantities.

³ The original valve design used on units built 1/11 and before used a straight valve and a 90 Degree elbow fitting. This valve arrangement was replaced starting 2/11 with a 90 degree valve that does not require an elbow fitting. When replacing an original design valve, the elbow fitting is removed, and then the listed 90 degree valve is a direct replacement.

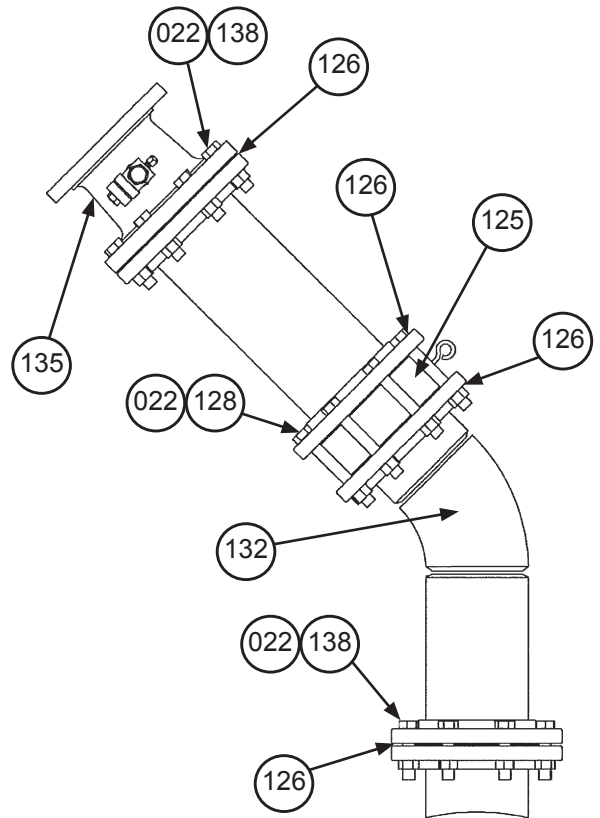
Unit Assembly

Discharge Piping Stack- Diagrams

087 Impeller Unit Detail
Shell Stack 36/30 ¹



092 Impeller Unit Detail
Shell Stack 30/26 & 36/30 ¹



¹ Shell Stack is the combined values of the diameter of the Evaporator and the Condenser Vessels. Eg.: 36/30 indicates that the unit has a 36" diameter Evaporator and a 30" diameter Condenser.

Unit Assembly

Discharge Piping Stack- Components

087 Impeller Unit Detail- Shell Stack 36/30

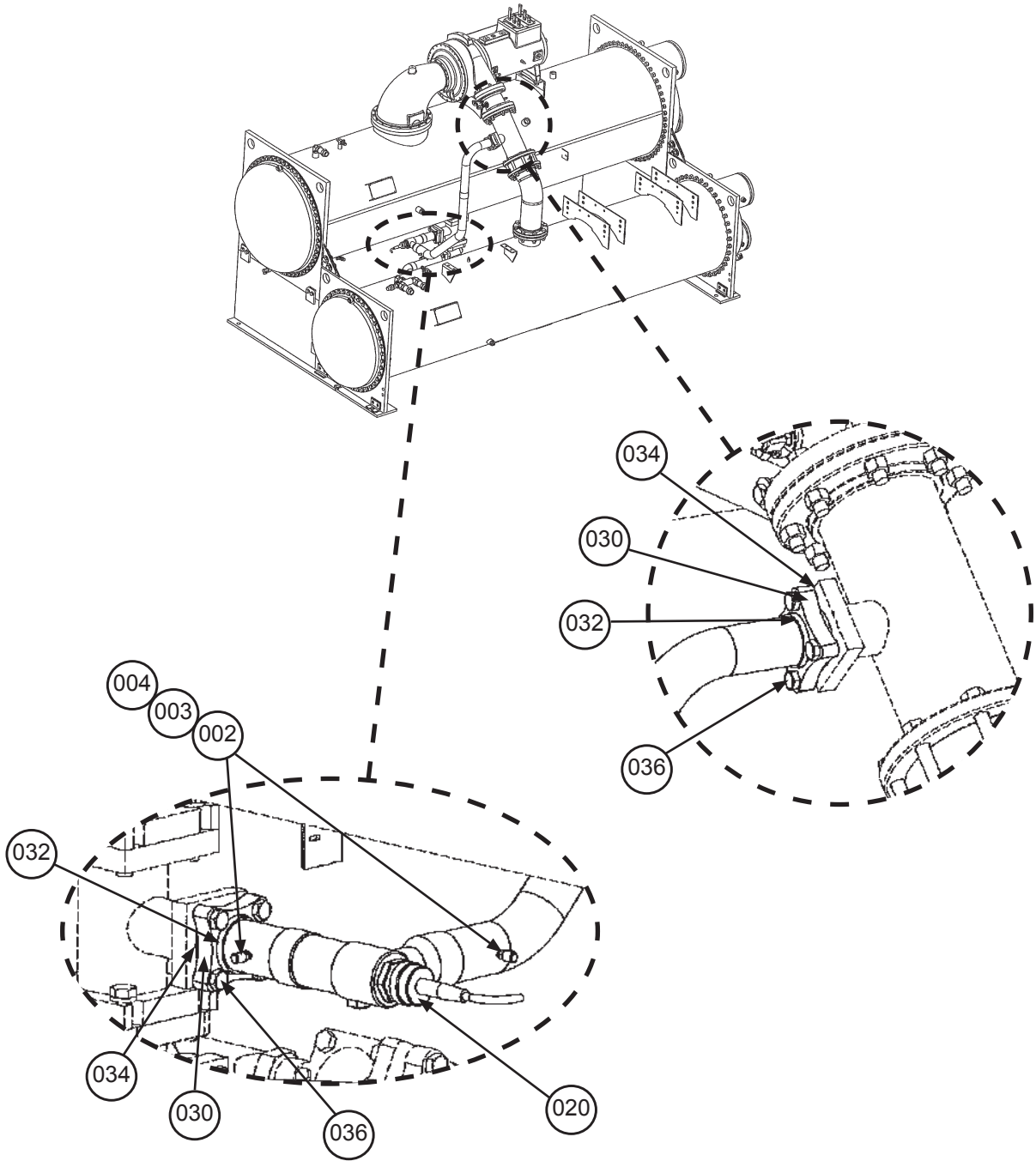
Ref. No.	Description	Part No.	Qty.
125	Valve- Check 10.0"	332507003	1
126	Gasket	070199039	3
128	Screw .88 x 7.0"	735034167	12
129	Nut	735029609	24
132	Elbow- 90 Degree 10.0"	735031364	1
134	Screw .88 x 3.5"	735034165	12
135	Nozzle- Discharge	331587802	1

092 Impeller Unit Detail- Shell Stack 30/26 & 36/30

Ref. No.	Description	Part No.	Qty.
022	Nut	735029626	24
125	Valve- Check 6.0"		
	Until 03/11	332507004	1
	03/11 & Later	332630204	1
126	Gasket	070199039	4
128	Screw .75 x 6.0"	735033972	8
132	Elbow- 90 Degree 6.0"	073222107	1
135	Nozzle- Discharge	331583802	1
138	Bolt 3/4-10 x 3.25"	735033966	16

Unit Assembly

Hot Gas Bypass- 092 Impeller (Code 07= AAB) Diagrams ¹



¹ For 087 Impeller units, contact Daikin Applied with model and serial number information to ensure that the correct part(s) are ordered.

Unit Assembly

Hot Gas Bypass- 092 Impeller (Code 07= AAB) Components ¹

Hot Gas Bypass- 092 Impeller (Code 07= AAB) Components

Ref. No.	Description	Part No.	Qty.
002	Core- Schrader Valve	026541100	2
003	Valve- Schrader	071100801	2
004	Cap- Schrader Valve	032943500	2
020	Valve- Expansion 250T	330386205	1
	Motor- Expansion Valve	330386209	1
	Sight Glass- Expansion Valve	300043182	1
030	Kit- Flange ²	735016403	2
032	Adapter	735049702	2
034	Gasket- Flange ²	070199112	2
036	Screw- Flange ² .62 x 2.50"	735033864	8

² The Flange Kit does NOT contain a gasket. If a gasket is required, order Gasket- Flange Ref # 034 p/n 070199112. Also, DO NOT use the screws that come with this Flange Kit. If screws are required, order 4pc. of Screw- Flange Ref # 036 p/n 735033864.

Hot Gas Bypass- 092 Impeller (Code 07= AAB) Kits

Ref. No.	Description	Part No.	Qty.
N/S	Kit, Hot Gas Bypass ³		
	Shell Stack 30/26	333378001	1
	Shell Stack 36/30	333378003	1

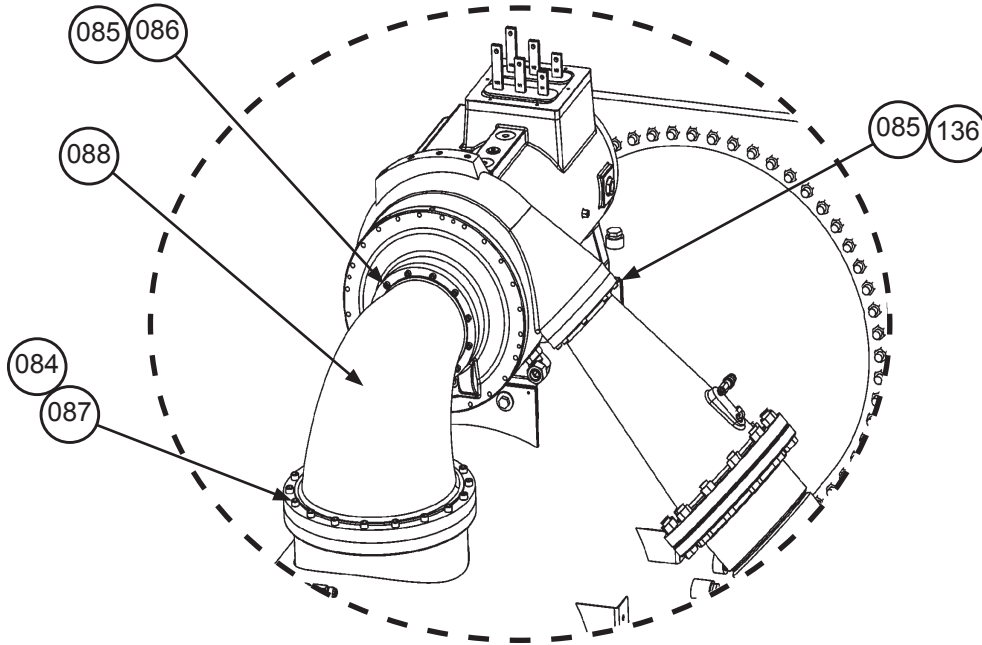
N/S= Not shown on diagram.

³ The Hot Gas Bypass Kit is designed to ADD Hot Gas Bypass capability to a unit. Common replacement parts for these kits are listed in the above table. Note that Hot Gas Bypass is NOT a coded option. Visual inspection of the unit is required to confirm the presence of the Hot Gas Bypass option.

¹ For 087 Impeller units, contact Daikin Applied with model and serial number information to ensure that the correct part(s) are ordered.

Unit Assembly

Suction Piping- 087 Impeller (Code 07= AAA)

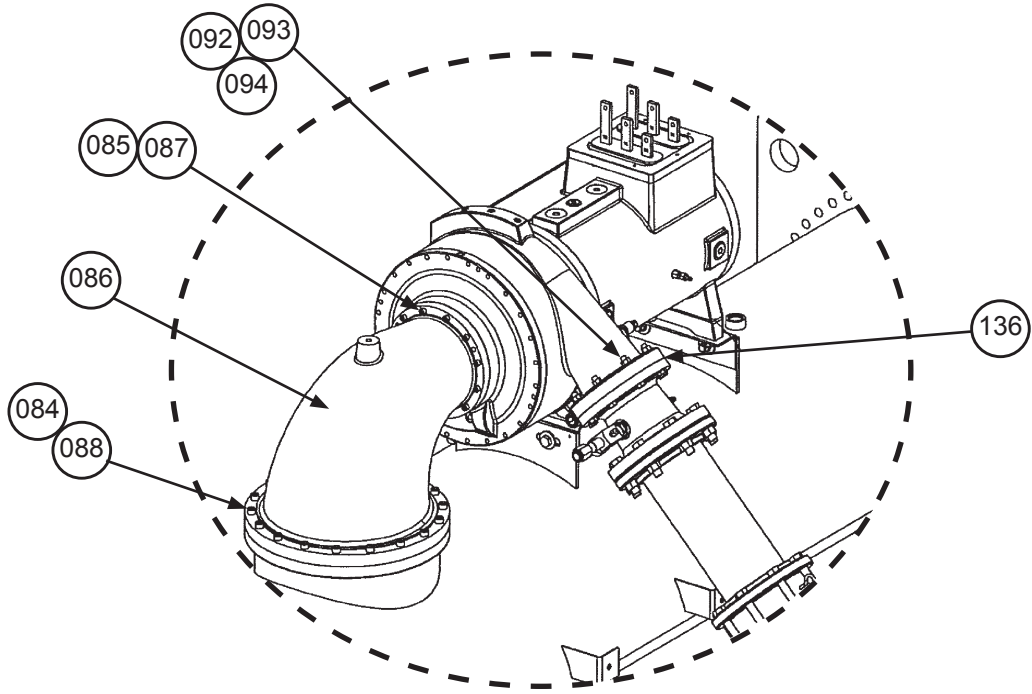


Ref. No.	Description	Part No.	Qty.
084	Screw .37 x 2.0"	735036512	18
085	Screw- Stainless Steel .38 -16 x 1.75"	331353707	20
086	O-Ring ¹	070194992	1
087	O-Ring ¹	350233017	1
088	Elbow- Suction 90 Degree	331352002	1
136	O-Ring	735073645	1

¹ Included in Compressor O-Ring Kit p/n 300049071.

Unit Assembly

Suction Piping- 092 Impeller (Code 07= AAB)

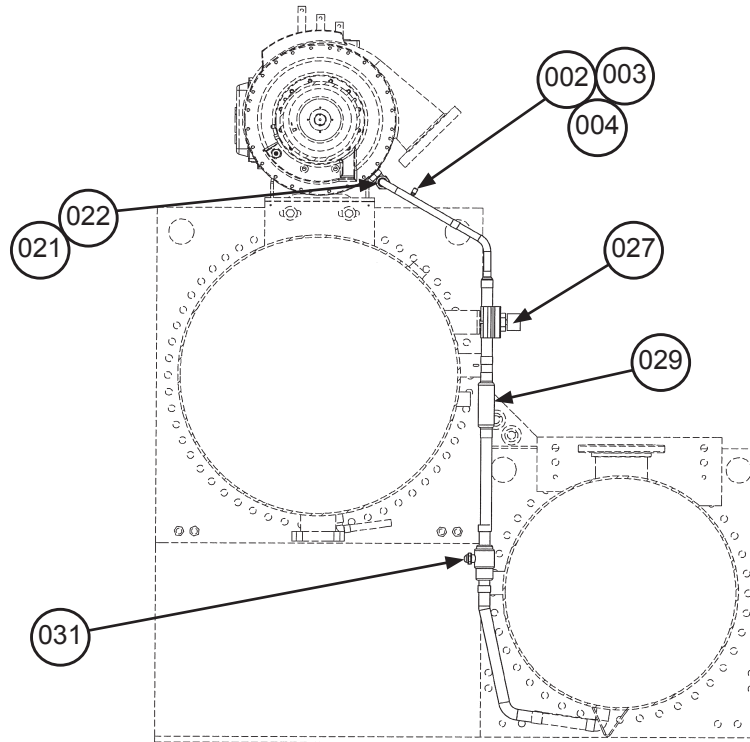


Ref. No.	Description		Part No.	Qty.
084	Screw	.37 x 2.0"	735036512	18
085	Screw- Stainless Steel	.38 -16 x 1.75"	331353707	12
086	Elbow- Suction 90 Degree		331352002	1
087	O-Ring ¹		070194992	1
088	O-Ring ¹		350233017	1
092	Screw	.50 x 3.0"	735033852	8
093	Washer		040500310	8
094	Nut		735029625	8
136	O-Ring		735073620	1

¹ Included in Compressor O-Ring Kit p/n 300049071.

Unit Assembly

Liquid Injection

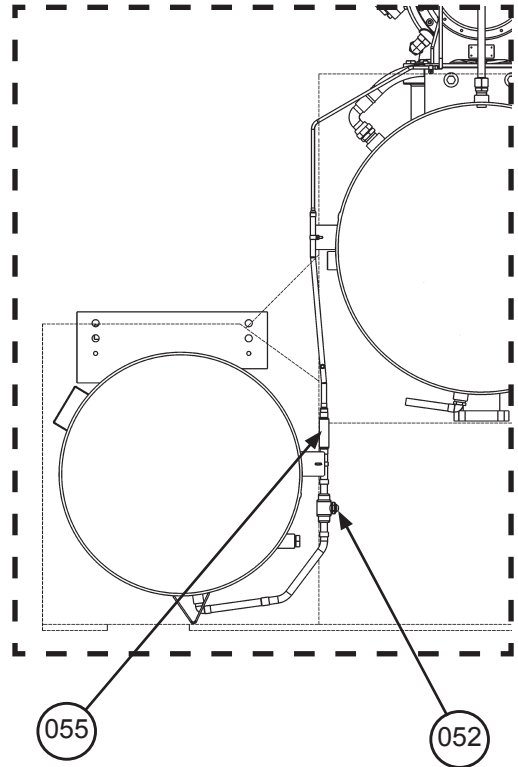
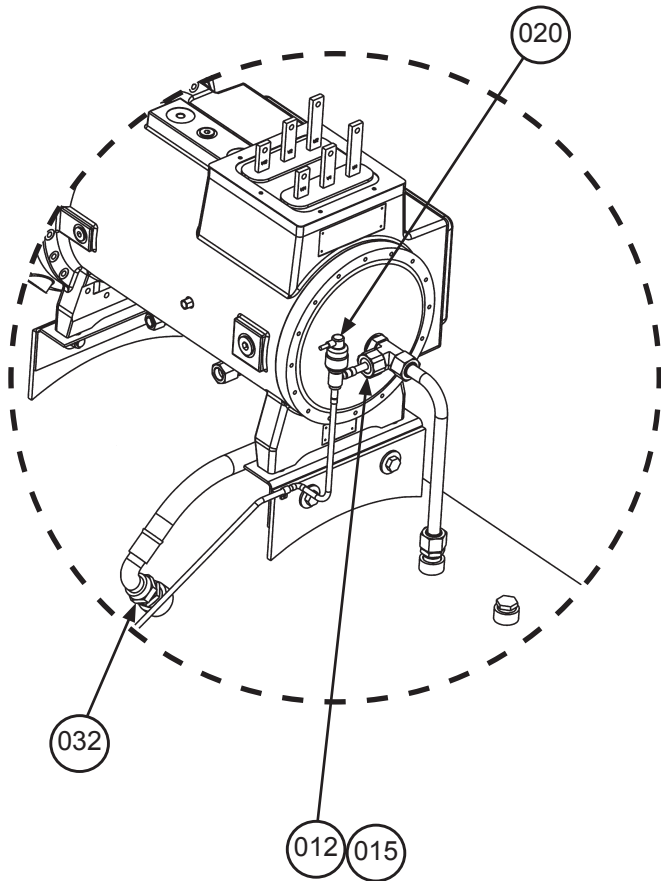
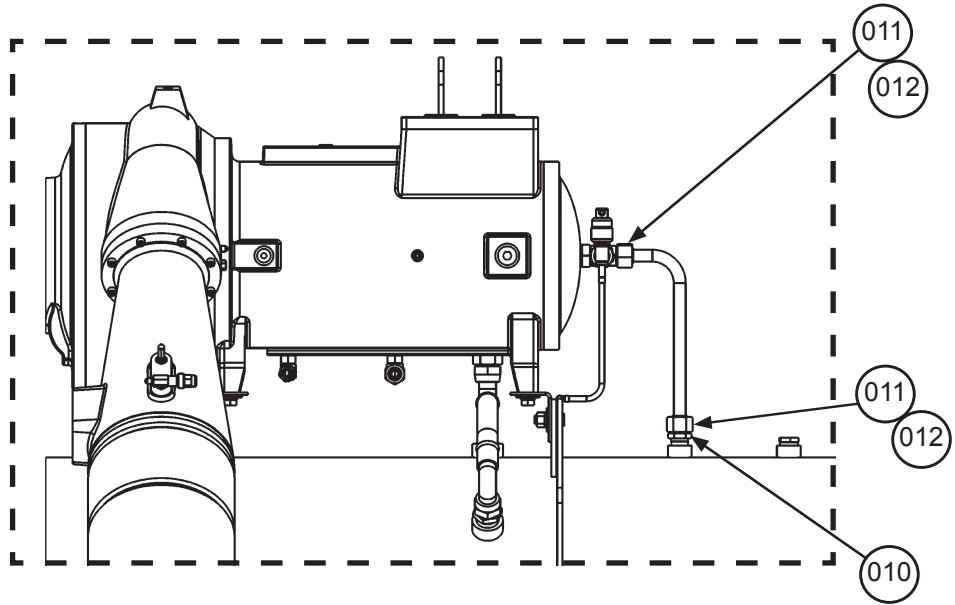


Ref. No.	Description	Part No.	Qty.
002	Core- Schrader Valve	026541100	1
003	Valve- Schrader	071100801	1
004	Cap- Schrader Valve	032943500	1
021	Fitting- ORFS to Braze Sleeve	070789351	1
	O-Ring ¹	070194968	1
022	Nut- Braze Sleeve	070789354	1
027	Valve- Solenoid	1.375" 331796004	1
N/S	Coil- Solenoid Valve	24VDC 331796054	1
029	Strainer	735030536	1
031	Valve- Ball	1.375" 330286006	1

¹ O-Ring(s) are furnished standard with each fitting. Order additional O-Rings if needed. ORFS Style O-Rings seat on the face end of the fitting. SAE style O-Rings seat at the base of the fitting.

Unit Assembly

Rotor Cooling 087 Impeller- Diagrams



Unit Assembly

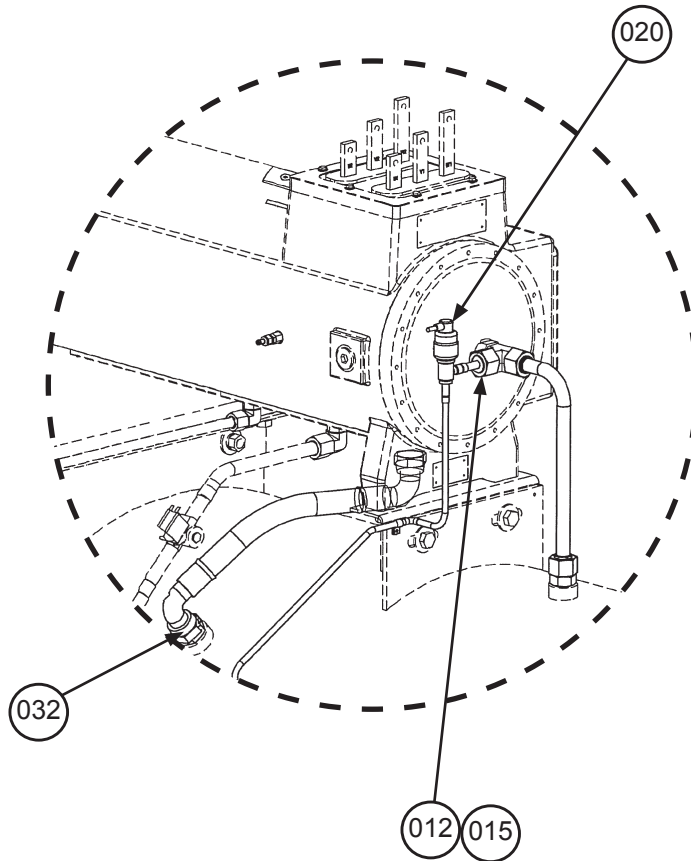
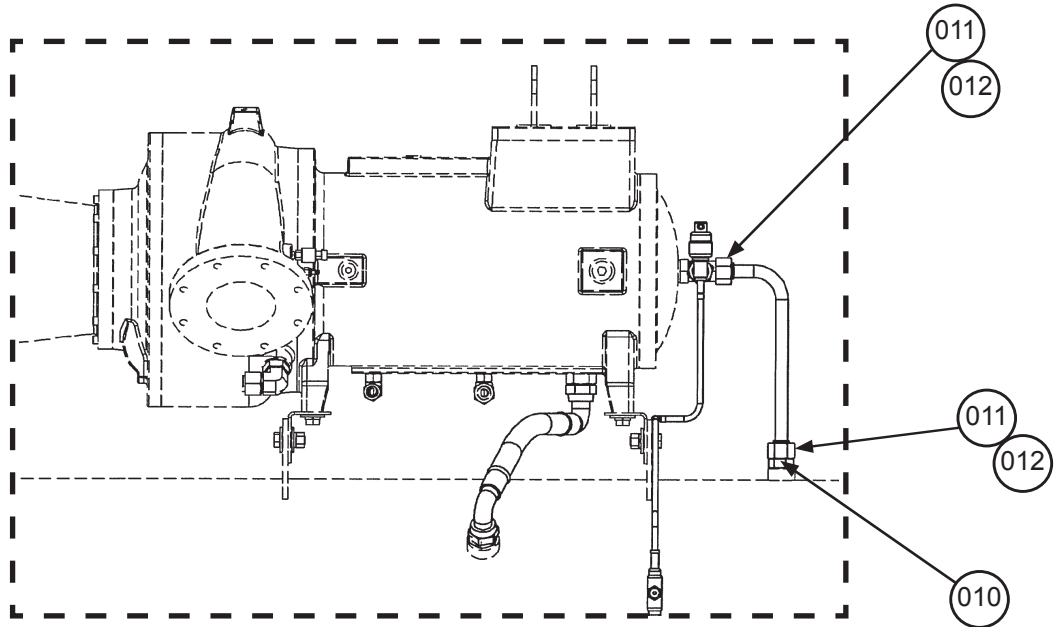
Rotor Cooling 087 Impeller- Components

Ref. No.	Description	Part Number	Qty.
010	Fitting- MP to ORFS	070789381	1
	O-Ring ¹	070194968	1
011	Fitting- ORFS to Braze Sleeve	070789351	2
	O-Ring ¹	070194968	2
012	Nut- Braze Sleeve	070789354	3
015	Fitting- ORFS to Reducer Sleeve	070789391	1
	O-Ring ¹	070194968	1
020	Valve- Solenoid	331796003	1
032	Fitting- MP to ORFS	070789382	1
	O-Ring ¹	300047193	1
052	Valve- Ball .875"	330286004	1
055	Strainer	735030501	1

¹ O-Ring(s) are furnished standard with each fitting. Order additional O-Rings if needed. ORFS Style O-Rings seat on the face end of the fitting. SAE style O-Rings seat at the base of the fitting.

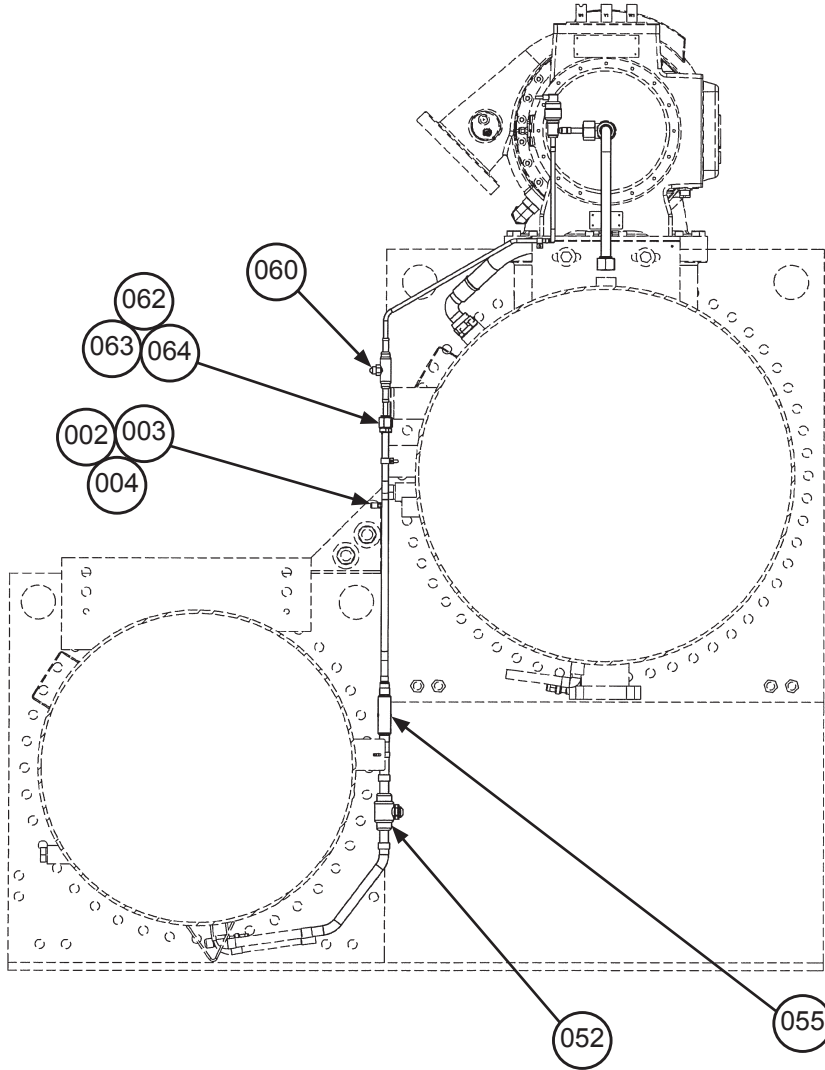
Unit Assembly

Rotor Cooling 092 Impeller- Diagrams



Unit Assembly

Rotor Cooling 092 Impeller- Diagrams, Continued



Unit Assembly

Rotor Cooling 092 Impeller- Components

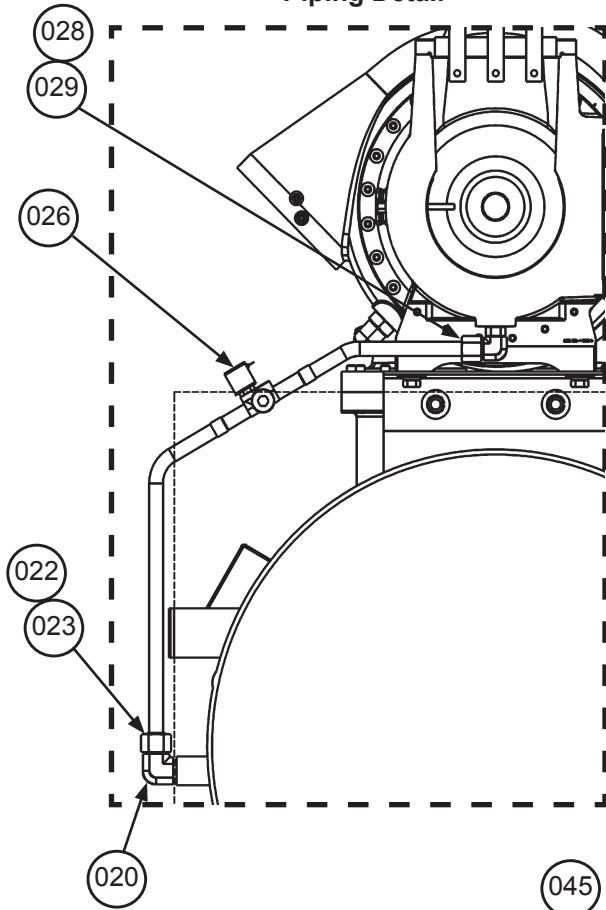
Ref. No.	Description	Part Number	Qty.
002	Core- Schrader Valve	026541100	1
003	Valve- Schrader	071100801	1
004	Cap- Schrader Valve	032943500	1
010	Fitting- ORFS to SAE	070789350	1
	O-Ring, ORFS ¹	070194968	1
	O-Ring, SAE ¹	070194980	1
011	Fitting- ORFS to Braze Sleeve	070789351	2
	O-Ring ¹	070194968	2
012	Nut- Braze Sleeve	070789354	3
015	Fitting- Reducer Sleeve	070789391	1
	O-Ring ¹	070194968	1
020	Valve- Solenoid	331796003	1
032	Fitting- MP to ORFS	070789383	1
	O-Ring, ORFS ¹	300047193	1
	O-Ring, SAE ¹	070194970	1
052	Valve- Ball .875"	330286004	1
055	Strainer	735030501	1
060	Valve- Ball .375"	330286001	1
062	Fitting- Nut	070789310	1
	O-Ring, ORFS ¹	735073650	1
063	Fitting- ORFS Braze Sleeve	332471636	1
	O-Ring, ORFS ¹	735073640	1
064	Fitting- ORFS Braze Socket	332471619	1
	O-Ring, ORFS ¹	735073640	1

¹ O-Ring(s) are furnished standard with each fitting. Order additional O-Rings if needed. ORFS Style O-Rings seat on the face end of the fitting. SAE style O-Rings seat at the base of the fitting.

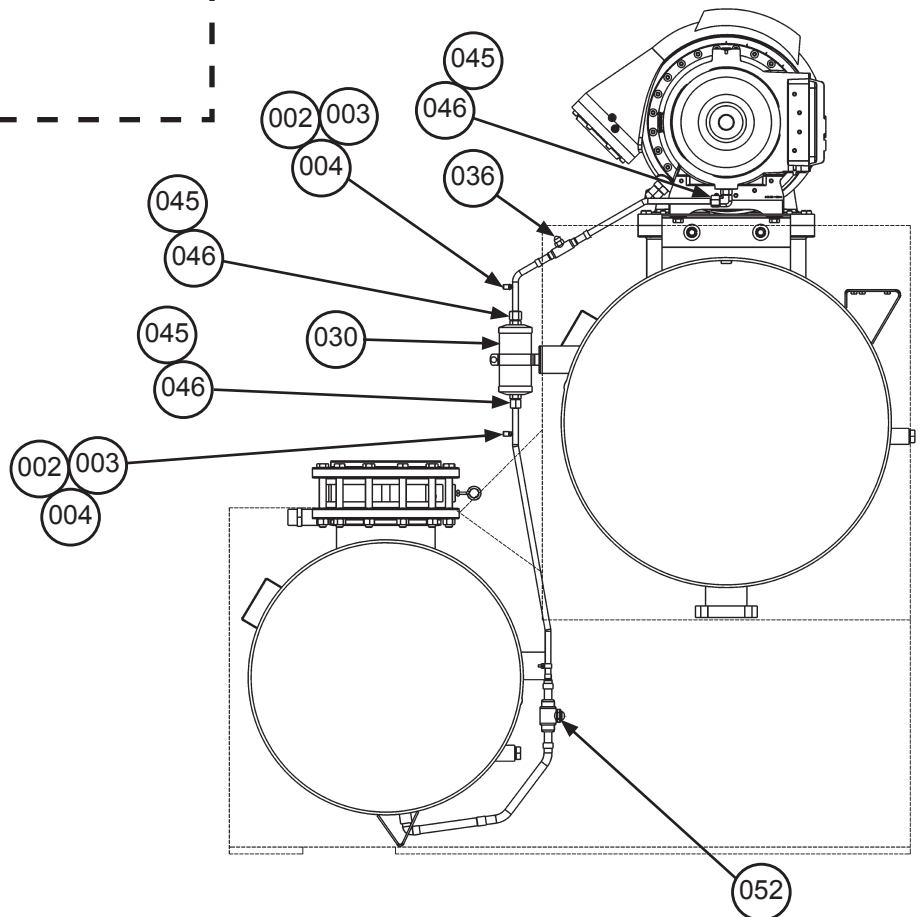
Unit Assembly

Stator Cooling 087 Impeller- Diagrams

Stator Cooling Return Section
Piping Detail



Stator Cooling Supply Section
Piping Detail



Unit Assembly

Stator Cooling 087 Impeller- Components

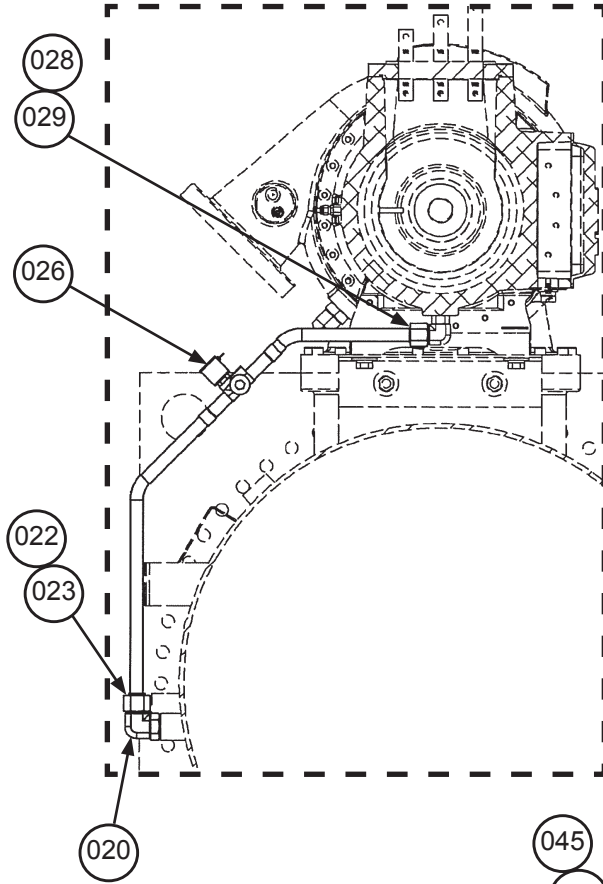
Ref. No.	Description	Part Number	Qty.
002	Core- Schrader Valve	026541100	2
003	Valve- Schrader	071100801	2
004	Cap- Schrader Valve	032943500	2
020	Fitting- Male Elbow to SAE	070789356	1
	O-Ring, SAE ¹	070194980	1
022	Fitting- ORFS to Braze Sleeve	070789351	1
	O-Ring ¹	070194968	1
023	Nut- Braze Sleeve	070789354	1
026	Valve- Solenoid	331796002	1
028	Fitting- Sleeve ORFS	070789361	1
	O-Ring, ORFS ¹	735073640	1
029	Fitting- Nut	070789360	1
030	Filter Drier	735028828	1
036	Valve- Ball .625"	330286003	1
045	Fitting- ORFS to Braze Sleeve	070789316	3
	O-Ring, ORFS ¹	735073650	3
046	Fitting- Nut ORFS	070789310	3
	O-Ring, ORFS ¹	735073650	3
052	Valve- Ball .875"	330286004	1

¹ O-Ring(s) are furnished standard with each fitting. Order additional O-Rings if needed. ORFS Style O-Rings seat on the face end of the fitting. SAE style O-Rings seat at the base of the fitting.

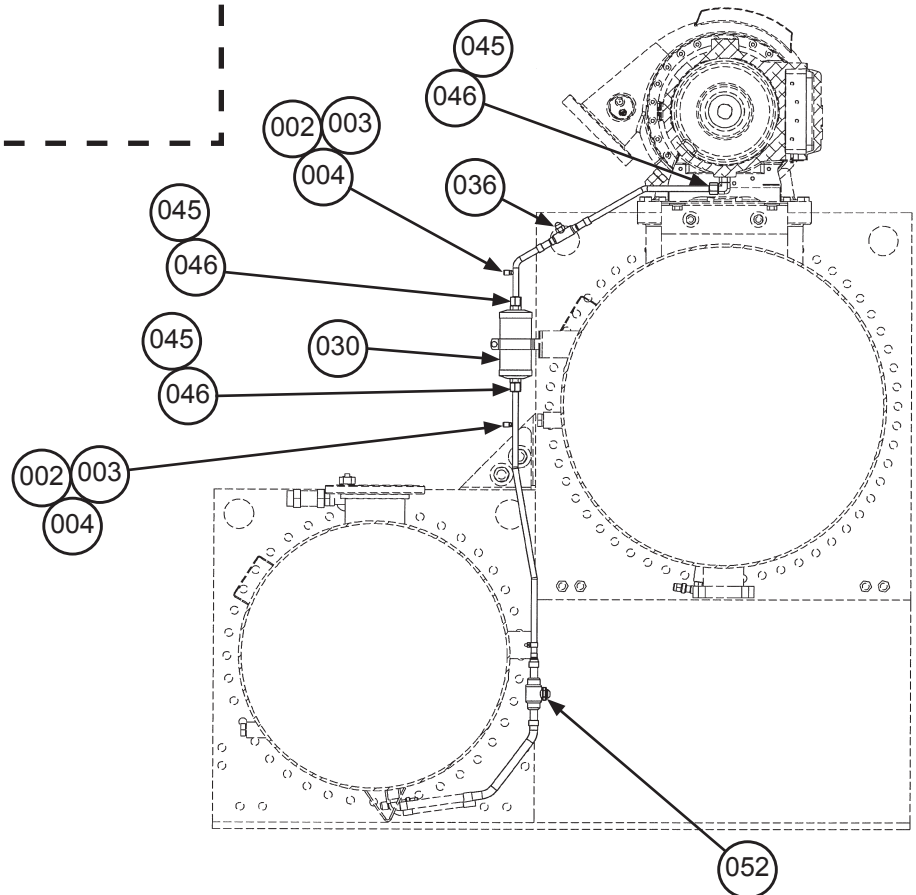
Unit Assembly

Stator Cooling 092 Impeller- Diagrams

Stator Cooling Return Section Piping Detail



Stator Cooling Supply Section Piping Detail



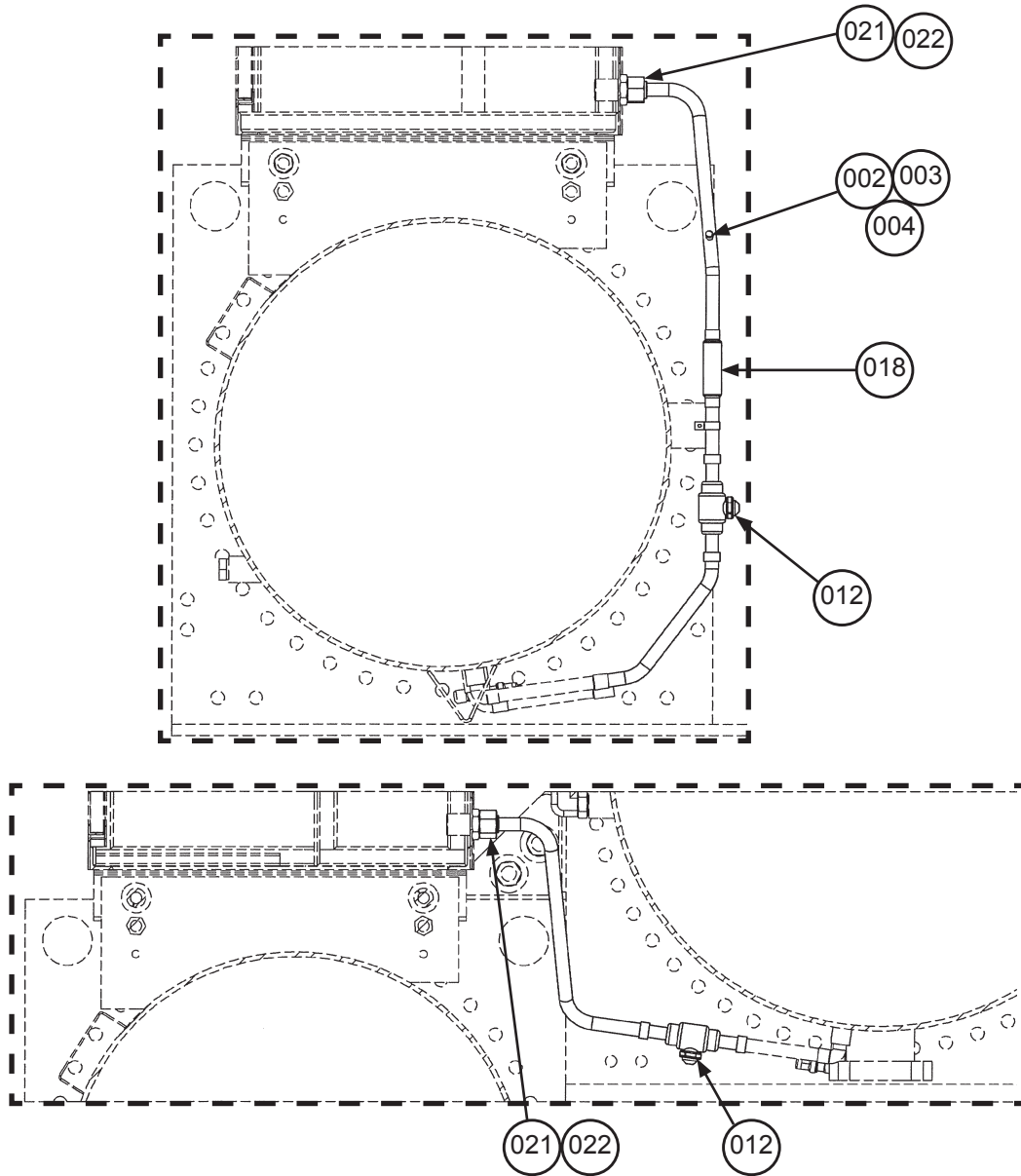
Unit Assembly

Stator Cooling 092 Impeller- Components

Ref. No.	Description	Part Number	Qty.
002	Core- Schrader Valve	026541100	2
003	Valve- Schrader	071100801	2
004	Cap- Schrader Valve	032943500	2
020	Fitting- Elbow ORFS to SAE	332471617	1
	O-Ring, ORFS ¹	070194968	1
	O-Ring, SAE ¹	070194980	1
022	Fitting- ORFS to Braze Sleeve	070789351	1
	O-Ring ¹	070194968	1
023	Nut- Braze Sleeve	070789354	1
026	Valve- Solenoid	331796002	1
	Coil- Solenoid Valve	24VDC 331796052	1
028	Fitting- Sleeve ORFS	070789361	1
	O-Ring, ORFS ¹	735073640	1
029	Fitting- Nut	070789360	1
030	Filter Drier	735028828	1
036	Valve- Ball	.625" 330286003	1
045	Fitting- ORFS to Braze Sleeve	070789316	3
	O-Ring, ORFS ¹	735073650	3
046	Fitting- Nut ORFS	070789310	3
	O-Ring, ORFS ¹	735073650	3
052	Valve- Ball	.875" 330286004	1

¹ O-Ring(s) are furnished standard with each fitting. Order additional O-Rings if needed. ORFS Style O-Rings seat on the face end of the fitting. SAE style O-Rings seat at the base of the fitting.

Unit Assembly VFD Cooling

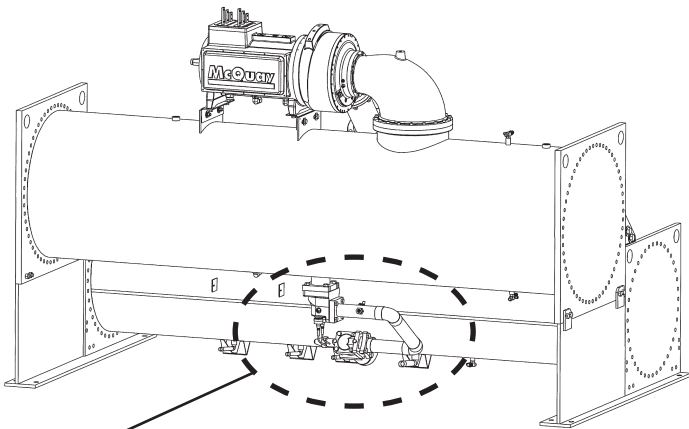


Ref. No.	Description	Part Number	Qty.
002	Core- Schrader Valve	026541100	1
003	Valve- Schrader	071100801	1
004	Cap- Schrader Valve	032943500	1
012	Valve- Ball .875"	330286004	2
018	Strainer	735030501	1
021	Fitting- ORFS to Braze Sleeve	070789351	2
	O-Ring ¹	070194968	2
022	Nut- Braze Sleeve	070789354	2

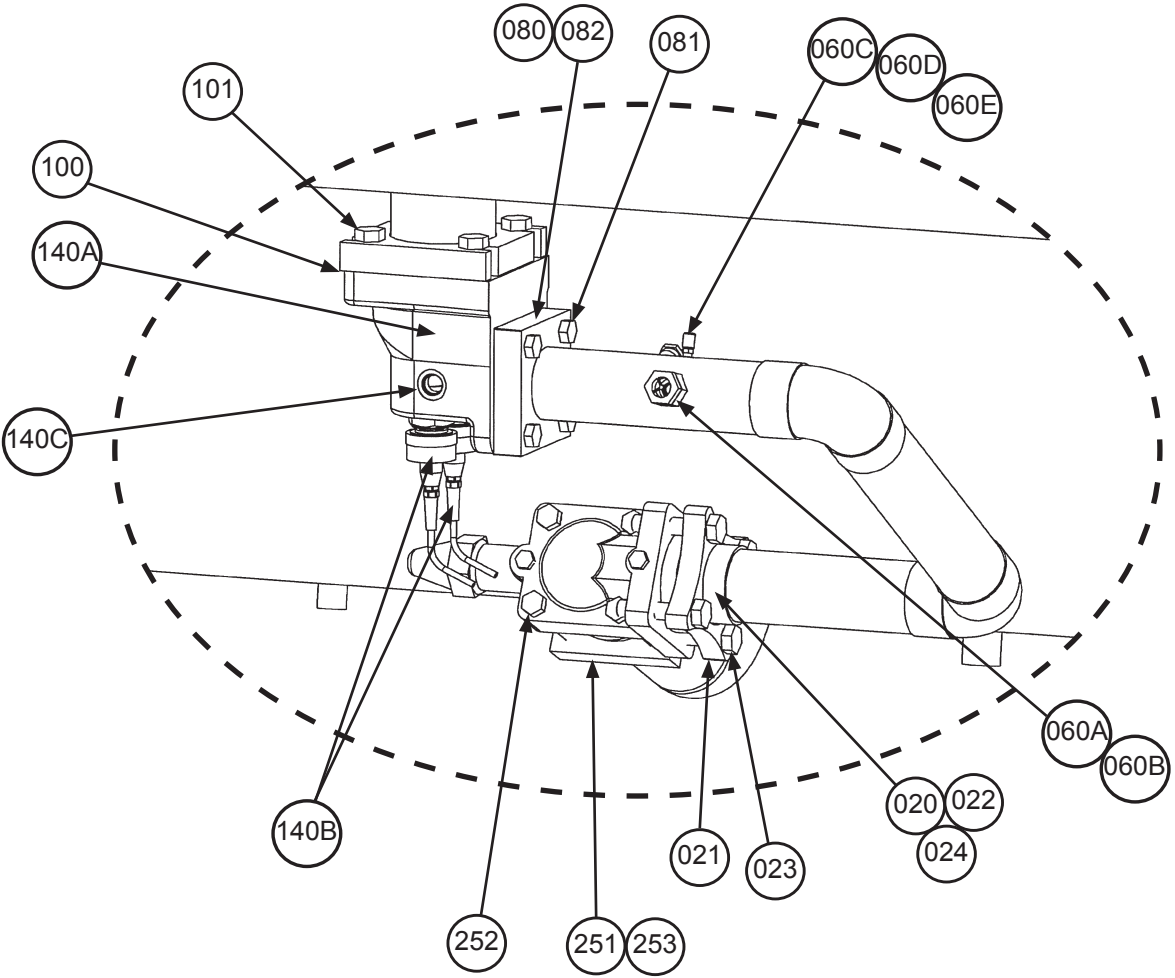
¹ O-Ring(s) are furnished standard with each fitting. Order additional O-Rings if needed. ORFS Style O-Rings seat on the face end of the fitting. SAE style O-Rings seat at the base of the fitting.

Unit Assembly

Liquid Line- Diagrams



See Detail Below

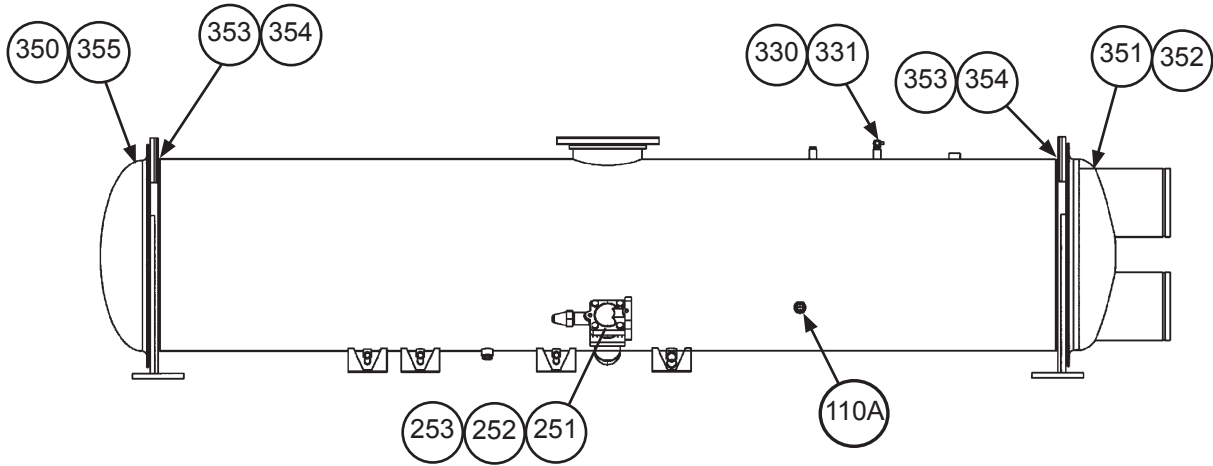


Unit Assembly Liquid Line- Components

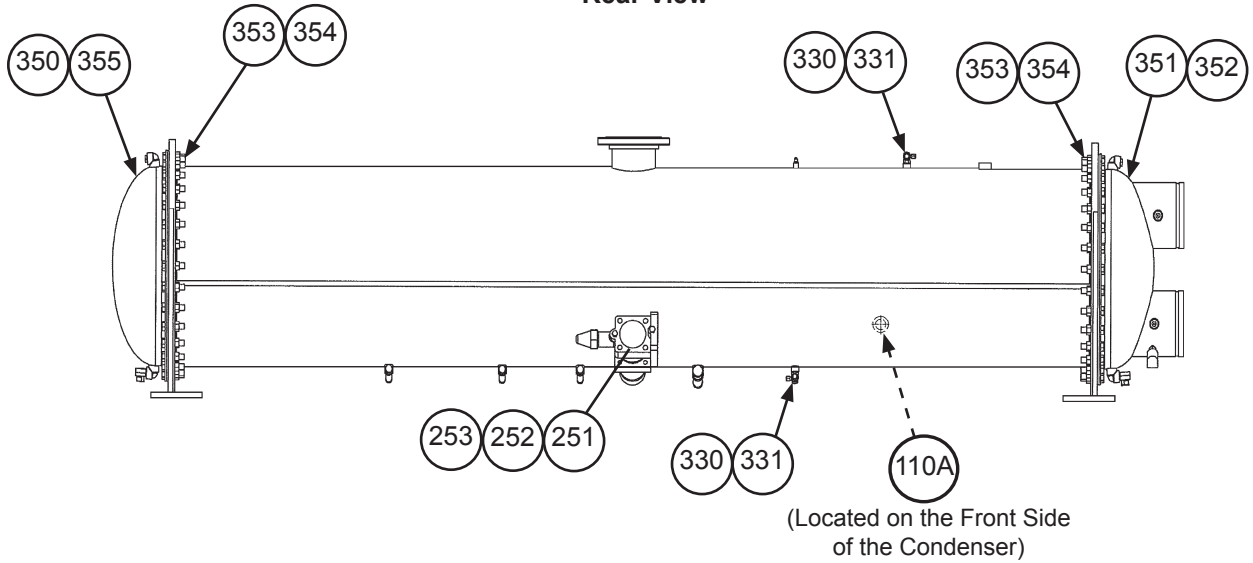
Ref. No.	Description	Part Number	Qty.
020	Coupling- Adapter	070760902	1
021	Flange	071992101	1
022	Gasket	735073402	1
023	Screw .75 x 3.5"	735033967	4
024	Strainer	070977801	1
060A	Saddle- Sight Glass	330743304	1
060B	Cap- Sight Glass	330508701	1
060C	Valve- Schrader	071100801	1
060D	Core- Schrader Valve	026541100	1
060E	Cap- Schrader Valve	032943500	1
080	Flange	070761402	1
081	Screw .625 x 2.50"	735033864	4
082	O-Ring	735043674	1
100	O-Ring	735073633	1
101	Screw .75 x 2.50"	735033877	4
140A	Expansion Valve- Body 650Ton	331861602	1
140B	Expansion Valve- Actuator	330386209	2
140C	Expansion Valve- Sight Glass .875"	015997817	2
251	Valve- Shut Off 3.0"	735039807	1
252	Screw .625 x 5.5"	735033958	4
253	Gasket- Shut Off Valve	070199104	1

Condenser Diagrams

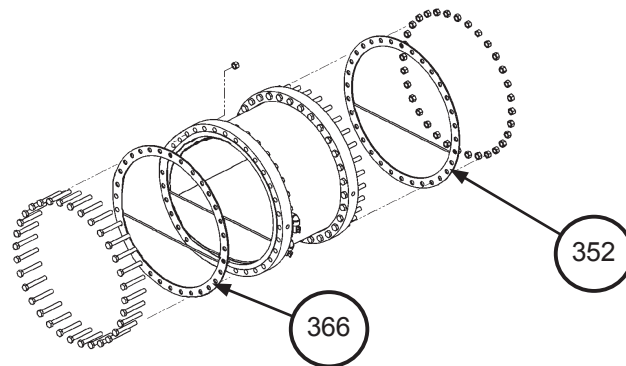
30" Condenser 087 Impeller
Rear View



26" & 30" Condenser 092 Impeller
Rear View



Water Box Head Option



Condenser

26" Condenser Heads, Head Gaskets & Hardware

Standard Heads- 2 Pass, 150 PSIG (Code 19= C4)

Ref. No.	Description	Part Number	Quantity
350	Return Head	332183102	1
351	Connection Head- Victaulic	332186503	1
	Connection Head- Flanged	332188303	1
352	Gasket- Connection Head	071557805	1
353	Screw .75 x 2.50"	735033877	64
354	Nut	735029626	64
355	Gasket- Return Head	070304646	1

Standard Heads- 2 Pass, 300 PSIG (Code 19= C5)

Ref. No.	Description	Part Number	Quantity
350	Return Head	333155742	1
351	Connection Head- Victaulic	333159143	1
352	Gasket- Connection Head	333849856	1
353	Screw .75 x 2.50"	735033572	128
354	Nut	735029628	128
355	Gasket- Return Head	070304636	1

Water Box Heads- 2 Pass

Ref. No.	Description	Part Number	Quantity
350	Return Head	332183102	1
351	Connection Head- Victaulic Water Box	1	1
	Connection Head- Flanged Water Box	1	1
352	Gasket- Water Box Head	071557855	1
355	Gasket- Return Head	070304646	1
366	Gasket- Water Box Cover	333850006	1

¹ Contact Daikin Applied with model and serial number information so that the correct part(s) can be identified.

Condenser

26" Condenser Heads, Head Gaskets & Hardware, Continued

Standard Heads- 3 Pass

Ref. No.	Description	Part Number	Quantity
351	Connection Head- Victaulic Water Inlet	331156904	1
	Connection Head- Victaulic Water Outlet	331156905	1
	Connection Head- Flanged Water Inlet	331158704	1
	Connection Head- Flanged Water Outlet	331158705	1
352	Gasket- Head	071557805	2
353	Screw .75 x 2.50"	735033877	64
354	Nut	735029626	64

Water Box Heads- 3 Pass

Ref. No.	Description	Part Number	Quantity
351	Connection Head- Victaulic Water Inlet	1	2
	Connection Head- Victaulic Water Outlet	1	2
	Connection Head- Flanged Water Inlet	1	2
	Connection Head- Flanged Water Outlet	1	2
352	Gasket- Water Box Head	071557855	2
355	Gasket- Return Head	070304646	2
366	Gasket- Water Box Cover	333850006	2

¹ Contact Daikin Applied with model and serial number information so that the correct part(s) can be identified.

Condenser

30" Condenser Heads, Head Gaskets & Hardware

Standard Heads- 2 Pass

Ref. No.	Description	Part Number	Quantity
350	Return Head	332183302	1
351	Connection Head- Victaulic	332186703	1
	Connection Head- Flanged	332188503	1
352	Gasket- Connection Head	071557806	1
353	Screw .75 x 3.00"	735033878	80
354	Nut	735029626	80
355	Gasket- Return Head	070304621	1

Water Box Heads- 2 Pass

Ref. No.	Description	Part Number	Quantity
350	Return Head	332183302	1
351	Connection Head- Victaulic Water Box	1	1
	Connection Head- Flanged Water Box	1	1
352	Gasket- Water Box Head	071557871	1
355	Gasket- Return Head	070304621	1
366	Gasket- Water Box Cover	333850007	1

¹ Contact Daikin Applied with model and serial number information so that the correct part(s) can be identified.

Condenser

30" Condenser Heads, Head Gaskets & Hardware, Continued

Standard Heads- 3 Pass

Ref. No.	Description	Part Number	Quantity
351	Connection Head- Victaulic Water Inlet	331157104	1
	Connection Head- Victaulic Water Outlet	331157105	1
	Connection Head- Flanged Water Inlet	331158904	1
	Connection Head- Flanged Water Outlet	331158905	1
352	Gasket- Head	071557806	2
353	Screw .75 x 3.00"	735033878	80
354	Nut	735029626	80

Water Box Heads- 3 Pass

Ref. No.	Description	Part Number	Quantity
351	Connection Head- Victaulic Water Box	1	2
	Connection Head- Flanged Water Box	1	2
352	Gasket- Water Box Head	071557871	2
355	Gasket- Return Head	070304621	2
366	Gasket- Water Box Cover	333850007	2

¹ Contact Daikin Applied with model and serial number information so that the correct part(s) can be identified.

Condenser

Tube Counts, Tubes, Sight Glass, Shut Off Valve & Gasket, Charge Valve & Cap

Tube Counts

For Tube counts see the Nomenclature Model Number- Complete section.

Tube Table ¹

Code 17 (2nd digit)	Wall Thickness	Type & Material	Part Number
L	.025	Turbo CSL, Cu	330441408
N	.028	Turbo CSL, Cu	330441425
P	.035	Turbo CSL, Cu	073238577

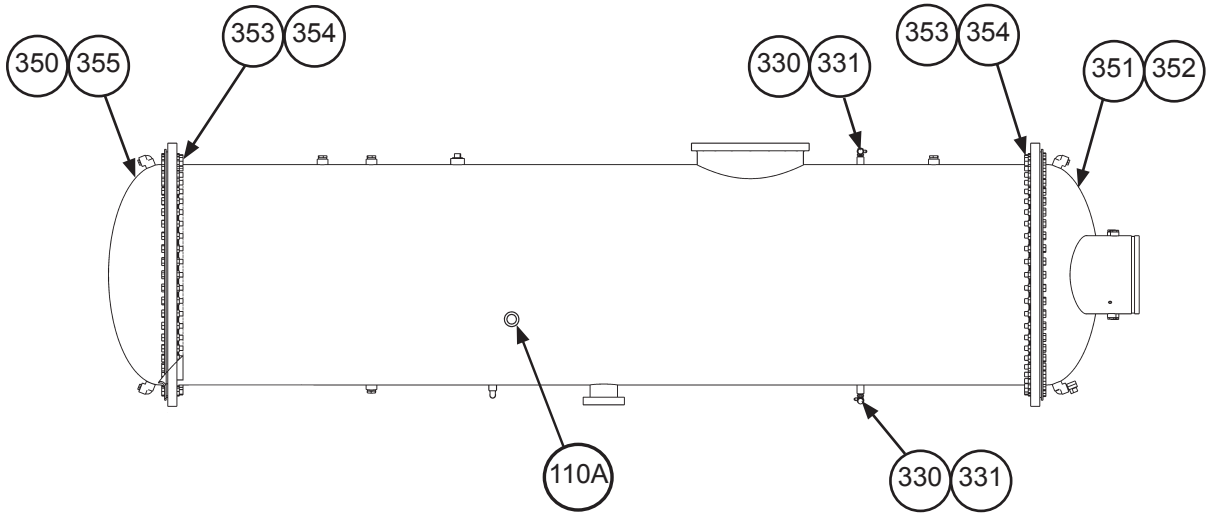
¹ For Tubes not listed, contact Daikin Applied with model and serial number information so that the correct tube(s) can be identified.

Sight Glass, Shut Off Valve & Gasket, Charge Valve & Cap

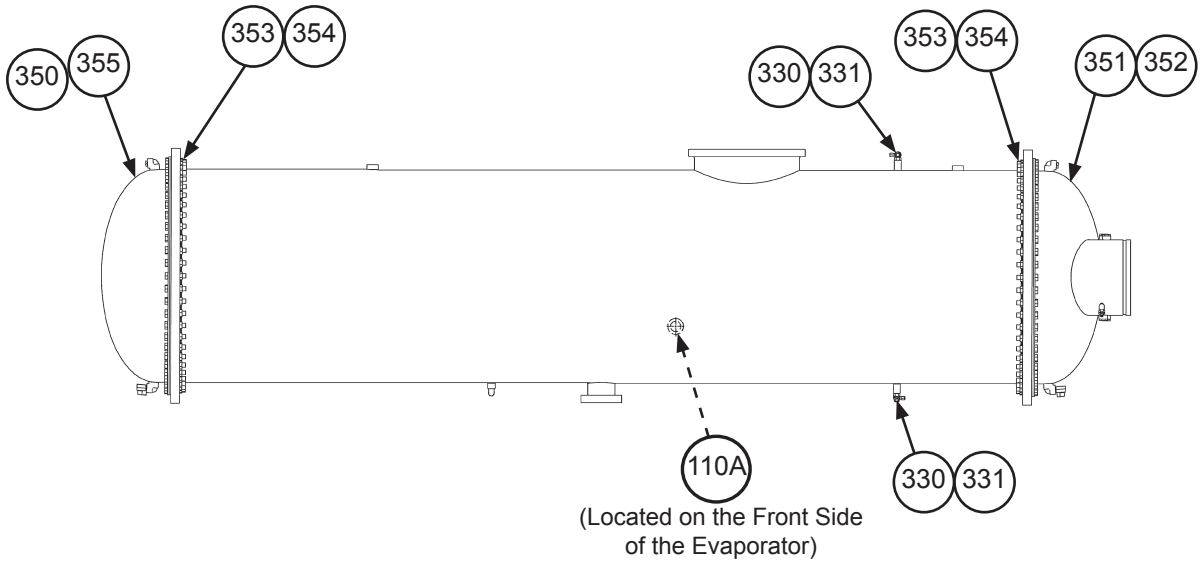
Ref. No.	Description	Part Number	Qty.
110A	Sight Glass 1.0" MPT	350229501	1
251	Valve- Shut Off (King Valve) 3.0"	735039807	1
252	Screw .625 x 5.5"	735033958	4
253	Gasket- Shut Off Valve	070199104	1
330	Valve- Charge (Code 7= AAA, 087 Impeller)	735039929	1
	Valve- Charge (Code 7= AAB, 092 Impeller)	332480201	2
331	Cap- Charge Valve	073243901	1 or 2

Evaporator Diagrams

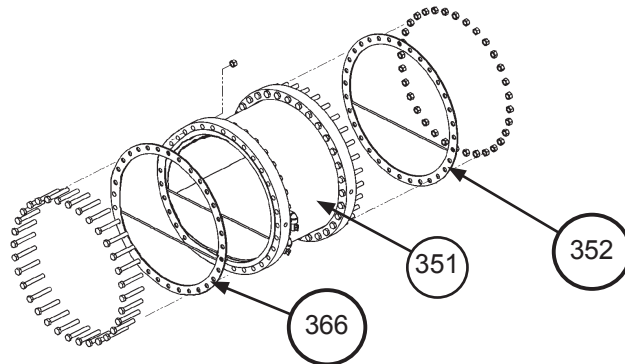
30" Evaporator 087 Impeller Rear View



26" & 30" Evaporator 092 Impeller Rear View



Water Box Head Option



Evaporator

30" Evaporator Heads, Head Gaskets & Hardware

Standard Heads- 2 Pass

Ref. No.	Description	Part Number	Quantity
350	Return Head	332183302	1
351	Connection Head- Victaulic	332183303	1
	Connection Head- Flanged	332184903	1
352	Gasket- Connection Head	071557806	1
353	Screw .75 x 3.00"	735033878	80
354	Nut	735029626	80
355	Gasket- Return Head	070304621	1

Water Box Heads- 2 Pass

Ref. No.	Description	Part Number	Quantity
350	Return Head	332183302	1
351	Connection Head- Victaulic Water Box	1	1
	Connection Head- Flanged Water Box	1	1
352	Gasket- Water Box Head	350296771	1
355	Gasket- Return Head	070304621	1
366	Gasket- Water Box Cover	333850007	1

¹ Contact Daikin Applied with model and serial number information so that the correct part(s) can be identified.

Evaporator

30" Evaporator Heads, Head Gaskets & Hardware, Continued

Standard Heads- 3 Pass

Ref. No.	Description	Part Number	Quantity
351	Connection Head- Victaulic	331153704	2
	Connection Head- Flanged	331155304	2
352	Gasket- Head	071557806	2
353	Screw .75 x 3.00"	735033878	80
354	Nut	735029626	80

Water Box Heads- 3 Pass

Ref. No.	Description	Part Number	Quantity
351	Connection Head- Victaulic	¹	2
	Connection Head- Flanged	1	2
352	Gasket- Water Box Head	350296771	2
366	Gasket- Water Box Cover	333850007	2

¹ Contact Daikin Applied with model and serial number information so that the correct part(s) can be identified.

Evaporator

36" Evaporator Heads, Head Gaskets & Hardware

Standard Heads- 2 Pass

Ref. No.	Description	Part Number	Quantity
350	Return Head	332183502	1
351	Connection Head- Victaulic	332183503	1
	Connection Head- Flanged	332185103	1
352	Gasket- Connection Head	071557807	1
353	Screw .75 x 3.00"	735033878	112
354	Nut	735029626	112
355	Gasket- Return Head	070304622	1

Water Box Heads- 2 Pass

Ref. No.	Description	Part Number	Quantity
350	Return Head	332183502	1
351	Connection Head- Victaulic Water Box	1	1
	Connection Head- Flanged Water Box	1	1
352	Gasket- Connection Head	350296772	1
355	Gasket- Return Head	070304622	1
366	Gasket- Water Box Cover	333850008	1

¹ Contact Daikin Applied with model and serial number information so that the correct part(s) can be identified.

Evaporator

36" Evaporator Heads, Head Gaskets & Hardware, Continued

Standard Heads- 3 Pass

Ref. No.	Description	Part Number	Quantity
351	Connection Head- Victaulic	331153904	2
	Connection Head- Flanged	331155504	2
352	Gasket- Head	071557807	2
353	Screw .75 x 3.00"	735033878	112
354	Nut	735029626	112

Water Box Heads- 3 Pass

Ref. No.	Description	Part Number	Quantity
351	Connection Head- Victaulic	1	2
	Connection Head- Flanged	1	2
352	Gasket- Water Box Head	350296772	2
366	Gasket- Water Box Cover	333850008	2

¹ Contact Daikin Applied with model and serial number information so that the correct part(s) can be identified.

Evaporator

Tubes, Tube Counts, Sight Glass, Charge Valve & Cap

Tube Counts

For Tube counts see the Nomenclature Model Number- Complete section.

Tube Table ¹

Code 09 (2nd digit)	Wall Thickness	Type & Material	Part Number
E	.025	Turbo EHP, Cu	073238590
F	.028	Turbo EHP, Cu	330441418
Q	.035	Turbo EHP, Cu	330441414

¹ For Tubes not listed, contact Daikin Applied with model and serial number information so that the correct tube(s) can be identified.

Sight Glass, Charge Valve & Cap

Ref. No.	Description	Part Number	Qty.
110A	Sight Glass 1.0" MPT	350229501	1
330	Valve- Charge (Code 7= AAA, 087 Impeller)	735039929	2
	Valve- Charge (Code 7= AAB, 092 Impeller)	332480201	2
331	Cap- Charge Valve	073243901	2

Critical Daikin Applied OEM Parts Are What Your HVAC Unit Needs!

Daikin Magnitude™ Centrifugal Chiller Daikin McQuay Magnitude™ Centrifugal Chiller McQuay Magnitude™ Centrifugal Chiller WME 0500

Critical Components	UNIT SIZE	Voltage	Part Number
Sensors			
S01 - Evap Entering Water Temp	0500	ALL	073007203
S02 - Evap Leaving Water Temp	0500	ALL	073007203
S05 - Cond Entering Water Temp	0500	ALL	073007203
S06 - Cond Leaving Water Temp	0500	ALL	073007203
S07, S13 - High Pressure Transducer (thru Aug. 2017)	0500	ALL	071568621
S07, S13 - High Pressure Transducer (beginning Sept. 2017)	0500	ALL	333992032
S09 - Liquid Line Temp	0500	ALL	073007203
S10 - Compr Suction Temp, 4.38" length *	0500	ALL	331795201
S10 - Compr Suction Temp, 6.0" length *	0500	ALL	331795205
S11 - Low Pressure Transducer (thru Aug. 2017)	0500	ALL	071568521
S11 - Low Pressure Transducer (beginning Sept. 2017)	0500	ALL	333992031
S12 - Compr Discharge Temp, 4.38" length *	0500	ALL	331795201
S12 - Compr Discharge Temp, 6.0" length *	0500	ALL	331795205
S14 - Motor Gap Temp	0500	ALL	331795205
*6.0" used in early production units. Confirm size before ordering.			
Switches			
S04 - Switch, Evap Entering Flow	0500	ALL	331796201
S08 - Switch, Cond Entering Flow	0500	ALL	331796201
S15 - Switch, High Pressure	0500	ALL	074796301
VFD Controls			
Wire Harness/Cable Kit	0500	ALL	300055446
Fuse, 20A/1000VAC	0500	ALL	300047094
Fuse, 600A/700V	0500	ALL	300047092
Fuse, 20A/800V	0500	ALL	300048941
Fuse, Power Supply Plate F1-2, F8-10	0500	ALL	300047089
Fuse, Power Supply Plate F3-5	0500	ALL	300047090
Fuse, Power Supply Plate F6-7	0500	ALL	300046902
Compressor O-Ring Kit			
Compressor O-Ring Kit	0500	ALL	300049071

Call Your Local Daikin Applied Parts Distributor For All Your Parts Needs.
To Locate A Distributor, Go To www.DaikinApplied.com or Call 1-800-37PARTS