

E-PAK TECHNOLOGY, INC.
 20 Haws Lane F-20
 FLOURTOWN, PA 19031



SUBMITTAL DATA
 Phone: 215-233-0608
 Fax: 215-233-0608

PROJECT SUMMARY:		
PROJECT NUMBER:	110608A	SOLD TO: Cyrus One
PROJECT NAME:	Houston Data Center	SALES OFFICE: HOME
PROJECT LOCATION:	Houston, TX	SALES ENGINEER: Thomas White
DATE:	06/08/11	E-PAK CONTACT: J. Guckin
ORDER DATE:	-	DESIGN ENGINEER: RLB Engineers
ORDER NUMBER:	-	NOTES: Final Proposal 82.8 WB

DESIGN CONDITIONS:		
WET BULB, F:	82.8	TOTAL FLOW RATE, GPM: 577
TOTAL CAPACITY, TONS:	288.3	PRESSURE DROP, FT: 12
COMPRESSOR POWER:	249.5	FLUID TYPE: H2O
TOTAL SYSTEM (kW):	297.5	FLUID PERCENT: 100%
TOTAL SYSTEM kW/TON:	1.03	FOULING FACTOR: 0.00010
SYSTEM EER:	11.6	SHIPPING WEIGHT: LBS. 44800
ENTERING FLUID TEMP, F:	60	OPERATING WEIGHT: LBS 56400
LEAVING FLUID TEMP, F:	48	REFRIGERANT TYPE: R-134a
VOLTS (60 HZ / 3 PH)	460	SYSTEM CHARGE LBS. : 2300

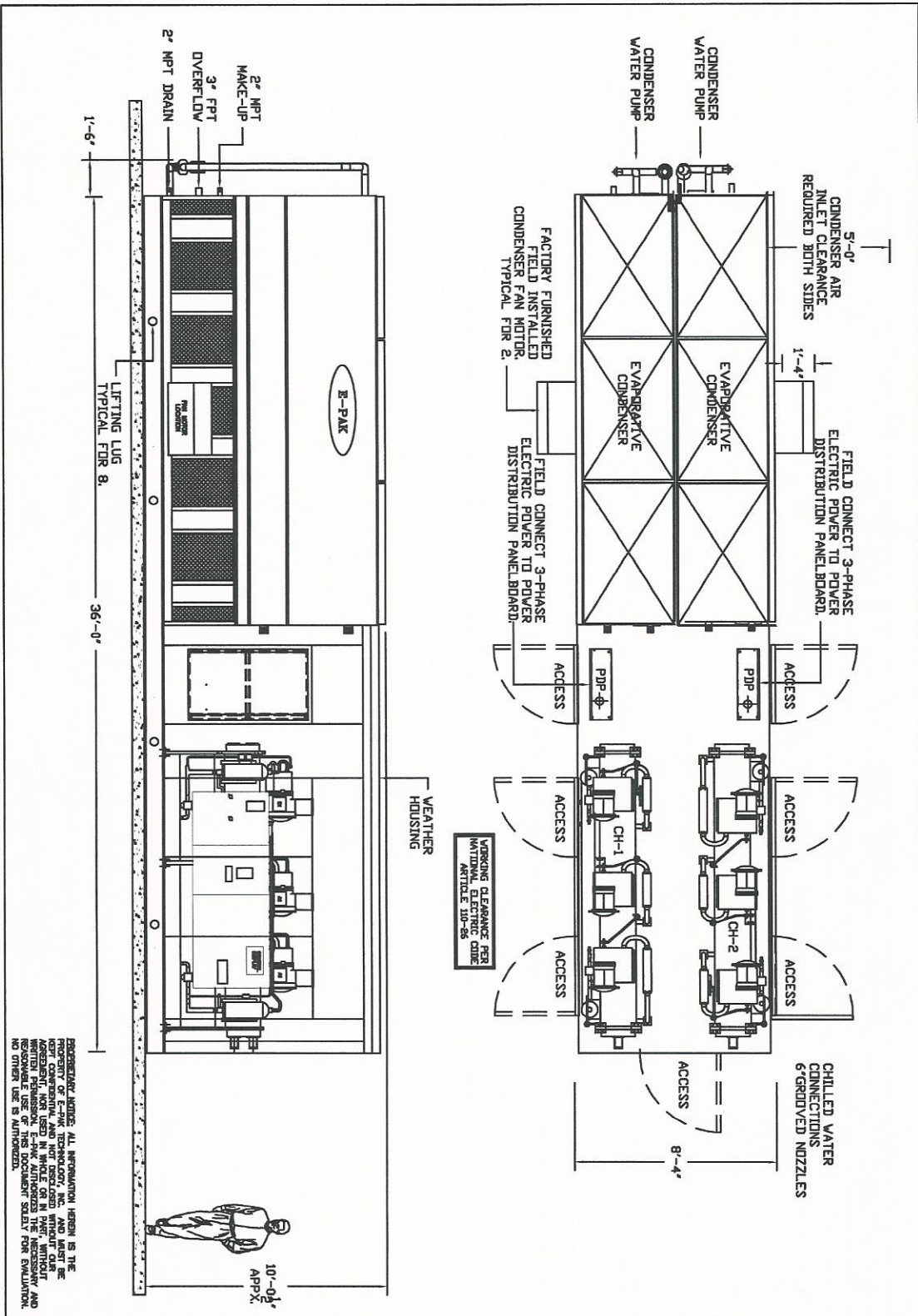
PROPOSAL SUMMARY:		
MODEL NO.:	ECC 530-268STT	NUMBER OF PRI. CHW PUMPS 0
		PUMP TDH IN FEET 0
		EACH PUMP % FLOW OF ENTIRE CHILLER PACKAGE 0%
DUTY:	Air Conditioning	NUMBER OF SEC. CHW PUMPS 0
	460 Volt Wye Delta	SEC. PUMP TDH IN FEET 0
STARTER:	Starter	EACH PUMP % FLOW OF SECONDARY SYSTEM 0%

Dual Power Souece Each Panel

EQUIPMENT LOADS :	TYPE	Volts	POWER	MCA	RLA	LRA	BRKR
CHILLER #1 HXA271	Chiller 1	460	249.5 kW	513.175	-	-	671.1
Compressor 1	H-Screw	460	-	-	157.9	371	NA
Compressor 2	H-Screw	460	-	-	157.9	371	NA
Compressor 3	H-Screw	460	-	-	157.9	371	NA
CHILLER #2 HXA271	Chiller 2	460	-	0	-	-	0.0
Compressor 1	H-Screw	460	-	-	-	-	NA
Compressor 2	H-Screw	460	-	-	-	-	NA
Compressor 3	H-Screw	460	-	-	-	-	NA
Condenser #1	-	460	-	-	0	0	0.0
Condenser Fan 1	TEFC	460	25 HP	-	34	182	76.5
Condenser Fan 2	TEFC	460	-	-	-	-	N/A
Condenser Pump 1	TEFC	460	2 HP	-	3.4	46	7.7
Condenser Pump 2	TEFC	460	-	-	-	0	N/A
	ODP	460	-	-	0	0	0.0
	ODP	460	-	-	0	0	0.0
	ODP	460	-	-	0	0	0.0
	ODP	460	-	-	0	0	0.0
Auxilliary power	Trnsfmr (Line/115V)	460	3 KVA	-	6.2	0	14.0
Totals	Totals	-	-	556.775	517.3	-	714.7

SOUND LEVEL = 66 dBA @ 50 ft

OUTDOOR DESIGN CONDITIONS = 112.6° F Dry Bulb Temp & 82.8° F Wet Bulb Temp



PROPRIETARY NOTICE: ALL INFORMATION HEREIN IS THE PROPERTY OF E-PAK TECHNOLOGY, INC. AND UNDER THE PROTECTIVE PATENT RIGHTS OF E-PAK TECHNOLOGY, INC. THIS AGREEMENT, NOT USED IN WHOLE OR IN PART, WITHOUT WRITTEN PERMISSION OF E-PAK TECHNOLOGY, INC. NO OTHER USE IS AUTHORIZED.

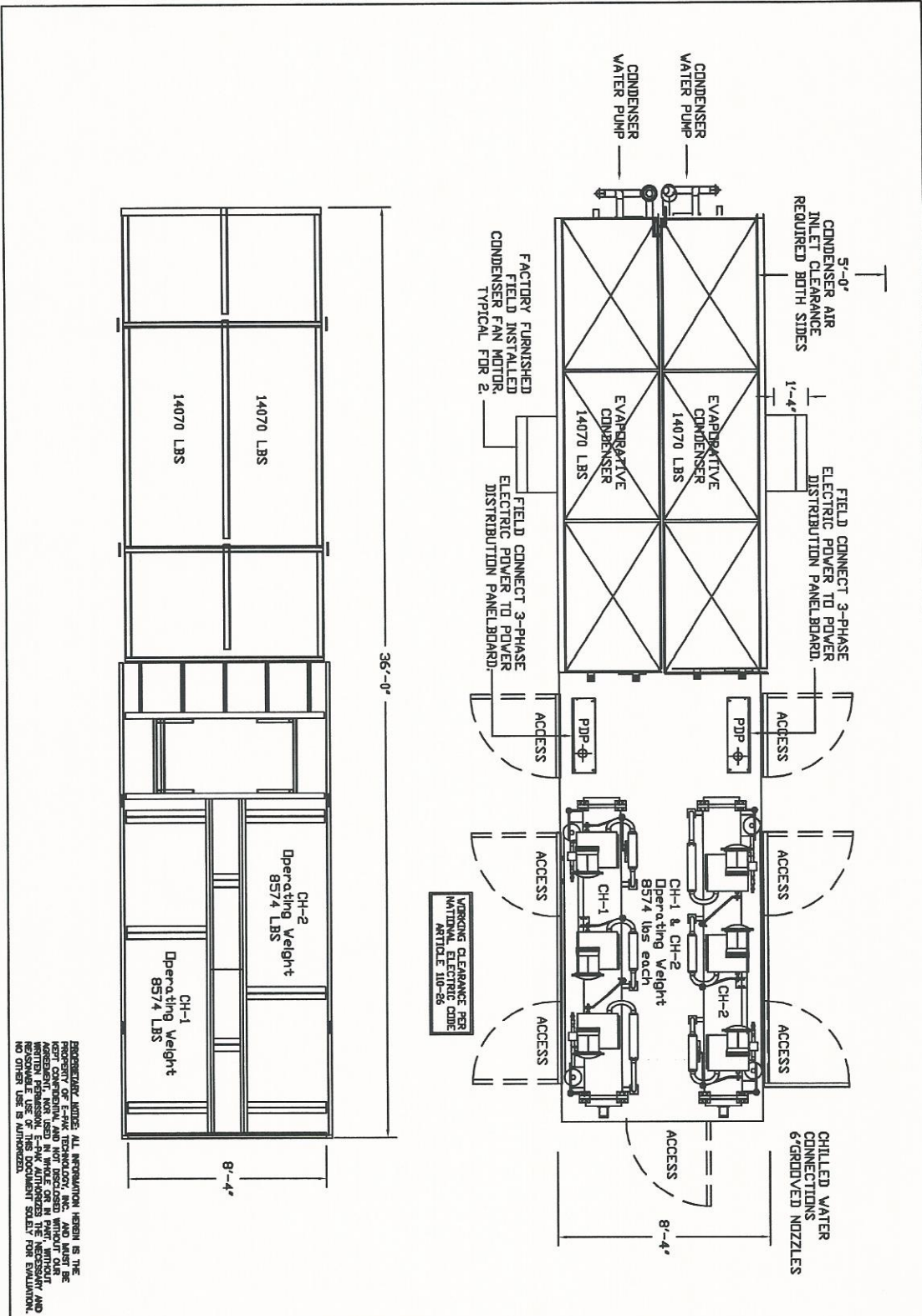
REV	DESCRIPTION	DRWN BY	DATE	APPROVED

E-PAK

E-PAK TECHNOLOGY, INCORPORATED

20 Hews Lane Suite F-20
 FLOUERTOWN, PA 19031
 PHONE: 215-233-0608
 FAX: 215-233-0608

DESCRIPTION: GENERAL ARRANGEMENT			
JOB NAME: CYRUS ONE DATA CENTER HOUSTON, TX		MODEL NO. ECC-530-268ST	
SIZE: B	JOB NO. 110608A	DWG NO. ECC-530-268ST	REV 0
SCALE: NTS	DRWN: BG	DATE: 12/10/02	SHEET: 1 OF 1



REPRODUCED HEREIN. ALL INFORMATION HEREIN IS THE PROPERTY OF E-PAK TECHNOLOGY, INC. AND SHALL BE KEPT CONFIDENTIAL AND NOT DISCLOSED WITHOUT OUR WRITTEN CONSENT. THIS DOCUMENT IS THE PROPERTY OF E-PAK TECHNOLOGY, INC. AND IS LOANED TO YOU FOR YOUR USE ONLY. NO OTHER USE IS AUTHORIZED.

REV	DESCRIPTION	DRWN BY	DATE	APPROVED

E-PAK

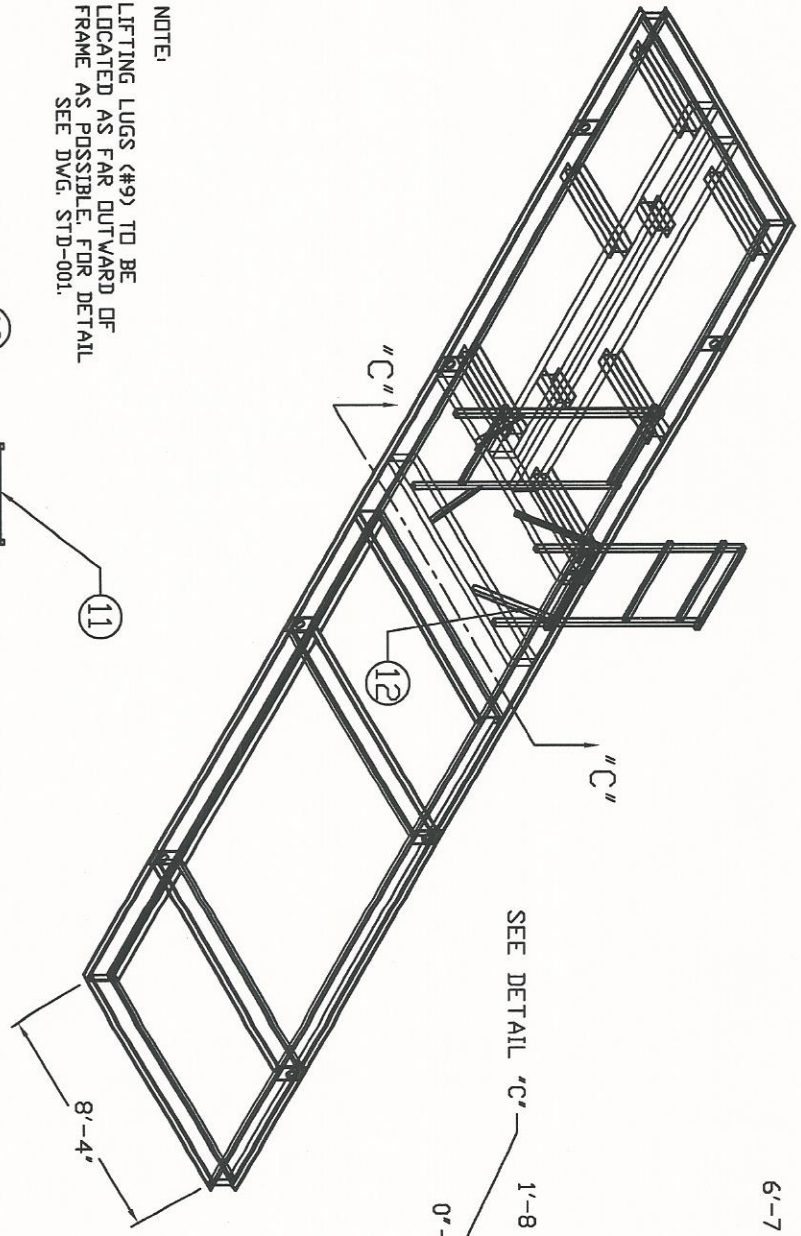
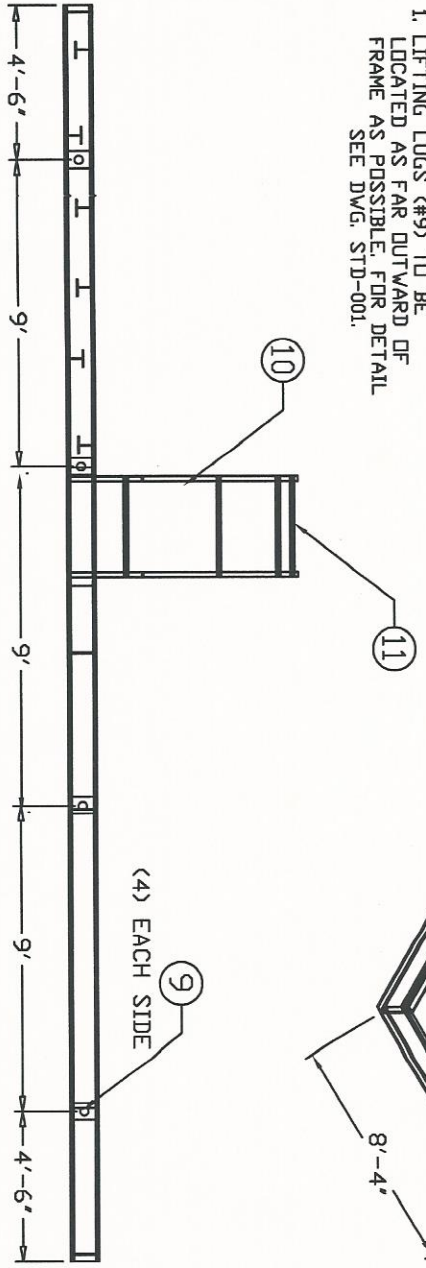
E-PAK TECHNOLOGY, INCORPORATED

20 Howe Lane Suite F-20
FLOURTOWN, PA 19031
PHONE: 215-233-0008
FAX: 215-233-0008

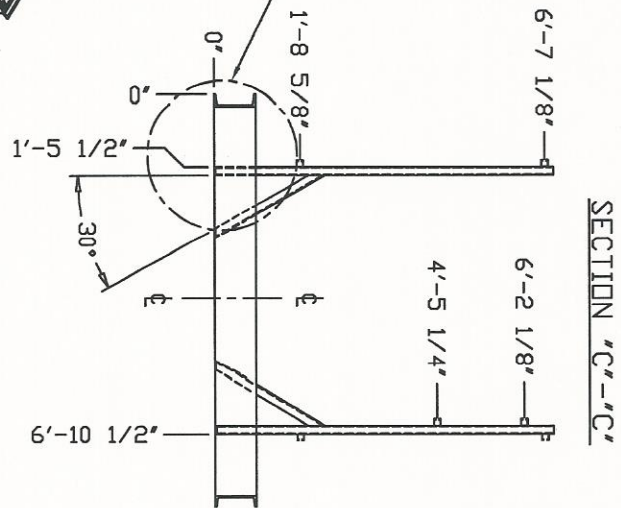
DESCRIPTION: EQUIPMENT WEIGHT LOADING			
JOB NAME: CYRUS ONE DATA CENTER HOUSTON, TX		MODEL NO. ECC-530-268ST	
SIZE	JOB NO.	DWG NO.	REV
B	110608A	ECC-530-268ST	0
SCALE: NTS	DWNG: BG	DATE: 12/10/02	SHEET: 1 OF 1

NOTE:
 1. LIFTING LUGS (#9) TO BE LOCATED AS FAR OUTWARD OF FRAME AS POSSIBLE. FOR DETAIL SEE DWG. STD-001.

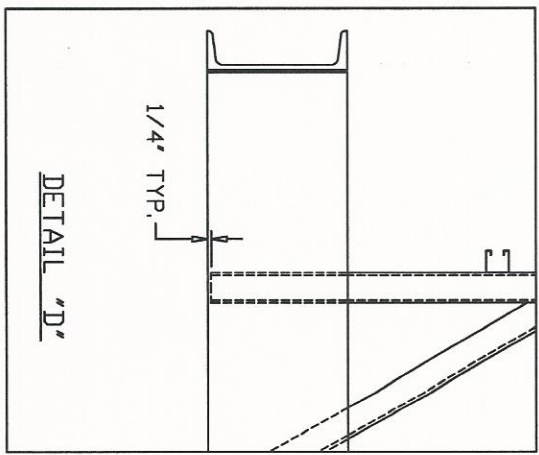
FRONT ELEVATION



SEE DETAIL 'C'



SECTION 'C-C'



DETAIL 'D'

REV	DESCRIPTION	DRWN BY	DATE	APPROVED

E-PAK
 E-PAK TECHNOLOGY, INCORPORATED
 20 HAWK LANE
 SUITE F-20
 FLOURTOWN, PA 19031
 PHONE: 215-233-0608
 FAX: 215-233-0608

DESCRIPTION: BASE FRAME FABRICATION			
JOB NAME: CYRUS ONE DATA CENTER HOUSTON, TX		MODEL NO. ECC-530-268ST	
SIZE: B	JOB NO. 110608A	DWG NO. 21216B-S1.DWG	REV 0
SCALE: NONE	DWN: AV	DATE: 11/12/02	SHEET: 3 OF 4

