

MODEL YCAL AIR-COOLED SCROLL CHILLERS WITH BRAZED PLATE HEAT EXCHANGERS STYLE E

15 – 65 TON
53 – 218 kW
50 and 60 Hz
R-410A

Model #: YCAL0056EE46XEBSDTXHXXRLXXXX44XXXXXXXXXXSXXXXXXXX1XXXXXSBXXXXX
Serial #: 11531E64741560

Year: 2016
Size: 56 Tons



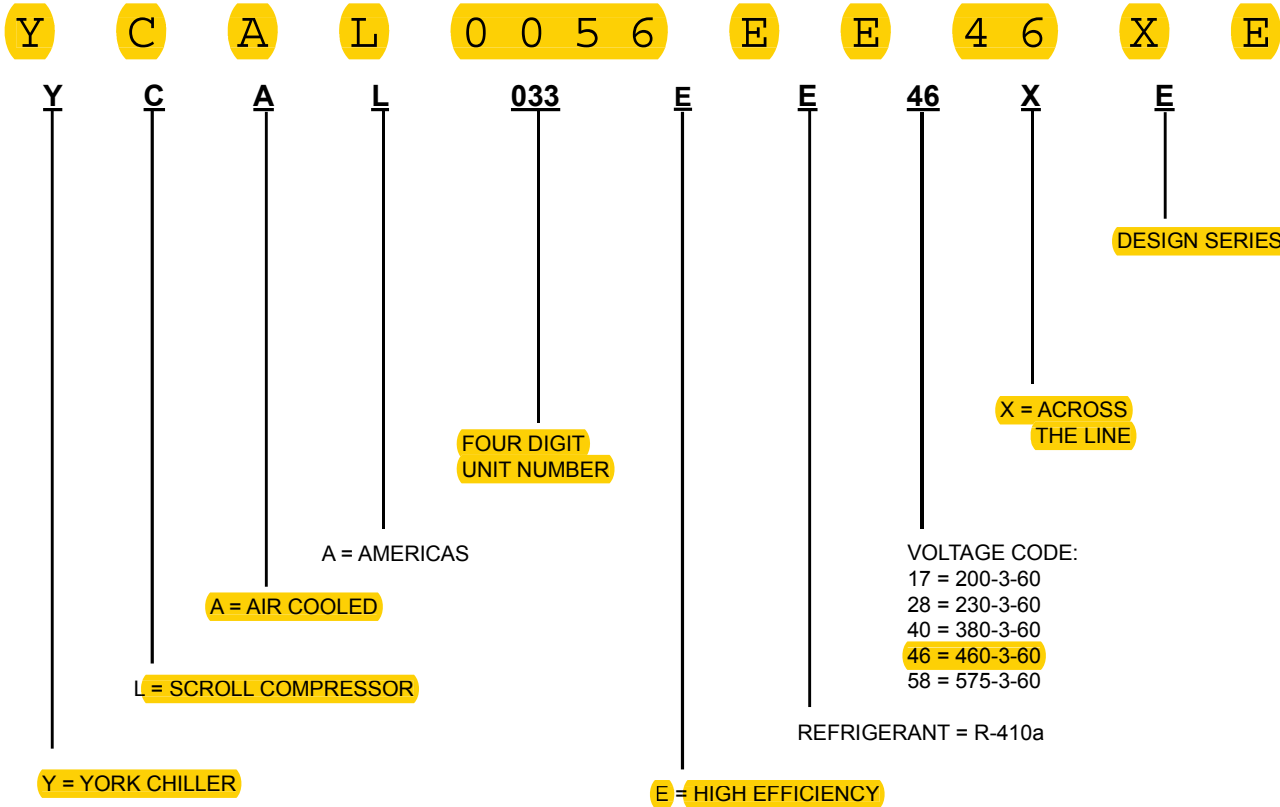
Shipping Weight: 3,208 lbs
Operating Weight: 3,245 lbs

L: 12' 6"
W 7' 7"
H: 5' 3"



 **YORK**[®]
INSTALL CONFIDENCE

Nomenclature



Approvals

- ASME Boiler and Pressure Vessel Code – Section VIII Division 1.
- AHRI Standard 550/590 and 551/591.
- UL 1995 – Heating and Cooling Equipment
- ASHRAE 15 – Safety Code for Mechanical Refrigeration
- ASHRAE Guideline 3 – Reducing Emission of Halogenated Refrigerants in Refrigeration and Air-Conditioning Equipment and Systems
- N.E.C. – National Electrical Code
- OSHA – Occupational Safety and Health Act



Products are produced at a facility whose quality-management systems are ISO9001 certified.

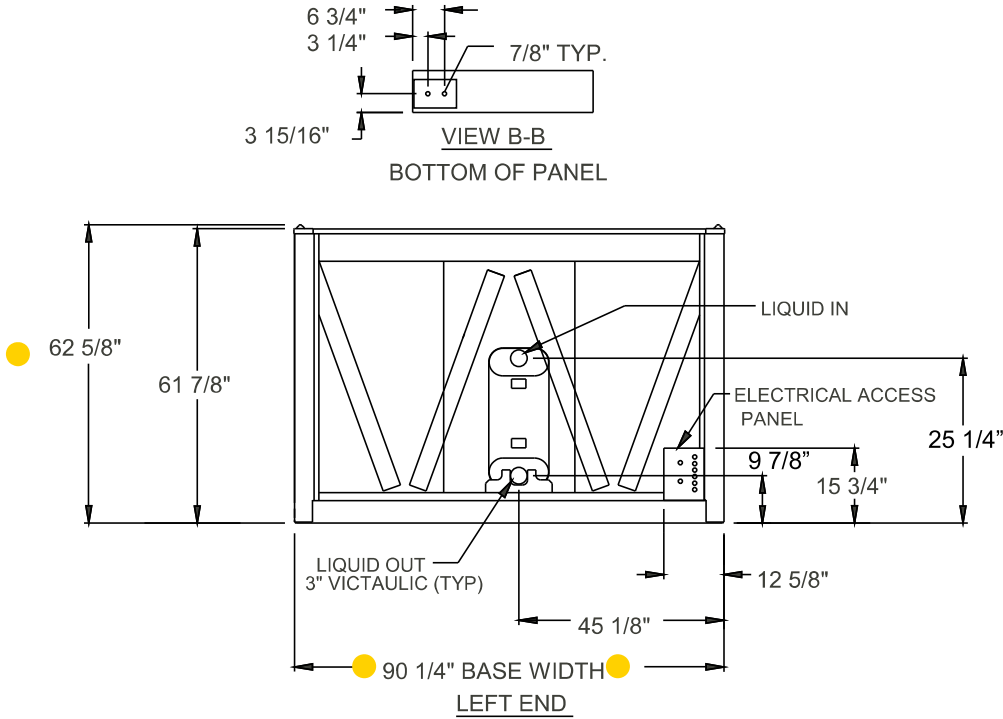
Physical Data and Nominal Ratings

60HZ

MODEL YCAL00		19	22	28	33	43	46	52	56	66
LENGTH		109.8	109.8	118.6	118.6	144.8	144.8	148.8	148.8	153.6
WIDTH		44.7	44.7	44.7	44.7	90.6	90.6	90.6	90.6	90.6
HEIGHT		46.1	46.1	50	50	47.8	47.8	62.6	62.6	62.6
NOMINAL TONS		14.5	17.8	24.3	28	34.9	38	45.2	45.2	60.1
Number of Refrigerant Circuits		1	1	1	1	2	2	2	2	2
Refrig. Chg, Opt, R-410A (lbs) ckt1/ckt2		25	30	45	50	35/35	40/35	45/45	50/50	65/65
Oil Charge, gallons ckt1/ckt2		1.8	1.8	1.7	2.2	1.8/1.8	1.8/1.8	1.7/1.7	1.7/1.7	2.3/2.2
Shipping	Alum. Fin Coils, lbs	1454	1567	1799	2034	2942	2968	3196	3208	4097
Weight	Copper Fin Coils, lbs	1597	1781	2005	2240	3300	3326	3673	3685	4703
Operating	Alum. Fin Coils, lbs	1481	1597	1829	2077	2967	3001	3233	3245	4142
Weight	Copper Fin Coils, lbs	1624	1811	2035	2283	3325	3359	3710	3722	4748
NOMINAL COMPRESSOR CAPACITY										
Compressor 1		8	10	15	15	10	12	13	15	20
Compressor 2		8	10	13	15	10	12	13	15	20
Compressor 3		–	–	–	–	–	–	–	–	–
Compressor 4		–	–	–	–	10	10	13	15	15
Compressor 5		–	–	–	–	10	10	13	15	15
Compressor 6		–	–	–	–	–	–	–	–	–
Condenser	Total Face Area ft ²	34.7	34.7	43.5	43.5	87	87	116	116	128
Number of Rows Deep	Ckt. 1	2	3	3	3	2	2	3	3	3
	Ckt. 2	–	–	–	–	2	2	3	3	3
Fins per Inch		17	17	13	13	17	17	17	17	13
CONDENSER FANS, LOW SOUND										
Number of Fans	Ckt. 1	2	2	2	2	2	2	2	2	2
	Ckt. 2	–	–	–	–	2	2	2	2	2
Fan Power hp/fan		0.3	0.3	1.2	1.2	1.2	1.2	1.2	1.2	1.2
Fan RPM		920	920	950	950	950	950	950	950	950
Total Chiller CFM		10833	10833	20000	20000	39500	39500	43333	43333	43333
CONDENSER FANS, ULTRA QUIET										
Number of Fans	Ckt. 1	2	2	2	2	2	2	2	2	2
	Ckt. 2	–	–	–	–	2	2	2	2	2
Fan Power hp/fan		1.2	1.2	1.2	1.2	1.2	1.2	1.2	1.2	1.2
Fan RPM		698	698	698	698	698	698	698	698	698
Total Chiller CFM		20000	20000	20000	20000	39500	39500	43333	43333	43333
EVAPORATOR										
Water Volume Gallons		1.2	1.6	2.5	3.2	2.7	3.5	3.5	4.1	4.9
Max Water Side Pressure PSIG		300	300	300	300	300	300	300	300	300
Max Refrig Side Pressure PSIG		450	450	450	450	450	450	450	450	450
Min. Chiller Water Flow GPM		10	10	10	10	40	40	60	60	60
Max. Chiller Water Flow GPM		150	150	150	150	200	200	300	300	300
Water Connection Size Inches		2	2	2	2	3	3	3	3	3

Unit Dimensions (Cont'd)

YCAL0056



LD18683

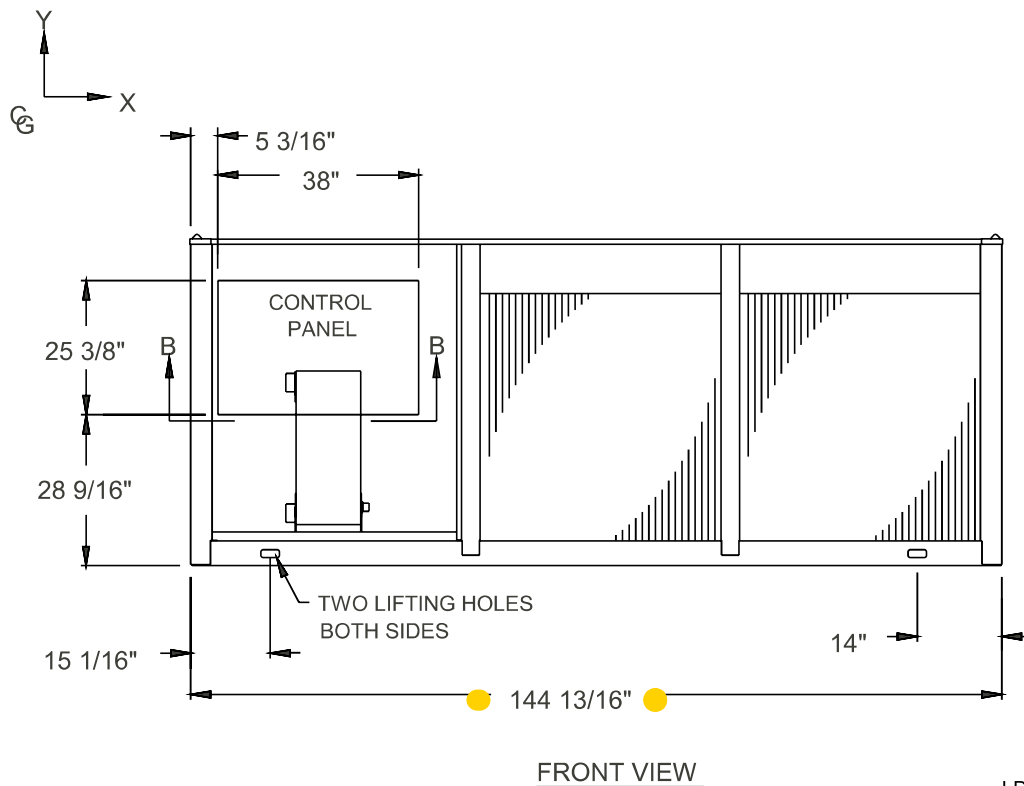
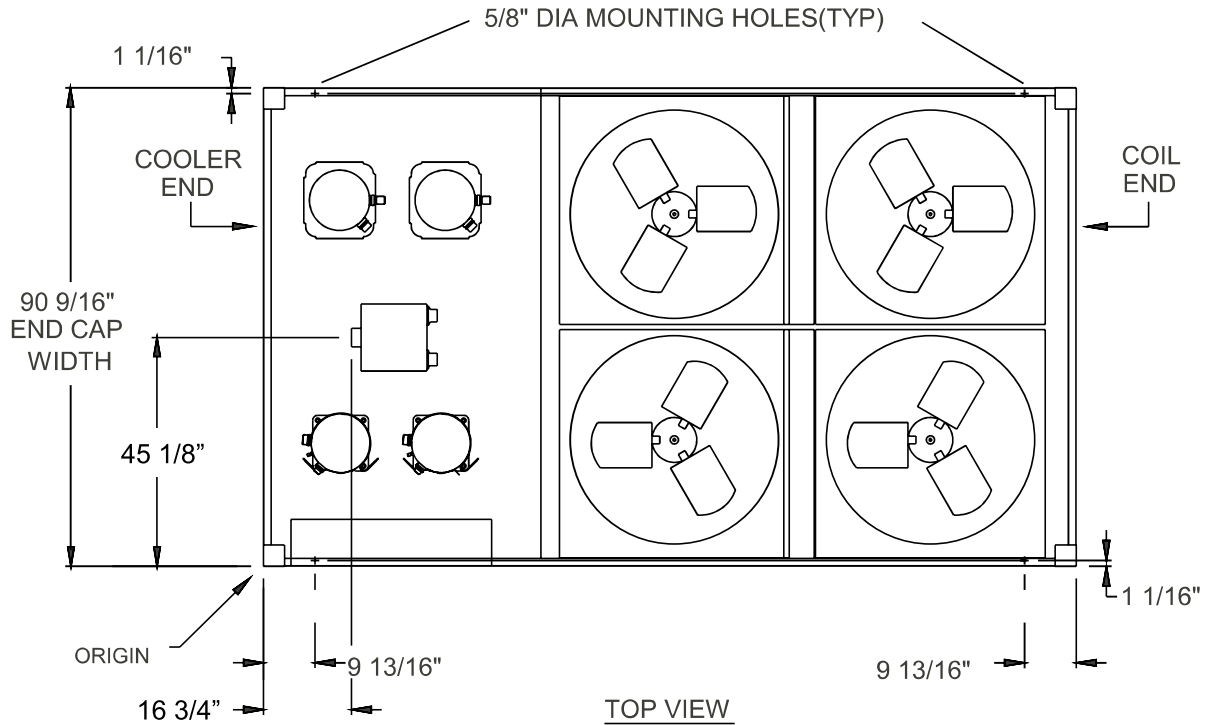
POWER: SINGLE POINT SUPPLY WITH TERMINAL BLOCK

NOTE:

Placement on a level surface of free of obstructions (including snow, for winter operation) or air circulation ensures rated performance, reliable operation, and ease of maintenance. Site restrictions may compromise minimum clearances indicated below, resulting in unpredictable airflow patterns and possible diminished performance. Johnson Controls's unit controls will optimize operation without nuisance high-pressure safety cut-outs; however, the system designer must consider potential performance degradation. Access to the unit control center assumes the unit is no higher than on spring isolators. Recommended minimum clearances: Side to wall – 6'; rear to wall – 6'; control panel to end wall – 4'0"; top – no obstructions allowed; distance between adjacent units – 10'. No more than one adjacent wall may be higher than the unit.

Unit Dimensions (Cont'd)

YCAL0056



LD18684

Electrical Data - 50 & 60Hz (Cont'd)

YCAL0019 - YCAL0066

WIRING WITHOUT PUMP

MODEL YCAL	VOLT	HZ	MIN CKT AMPS MCA	MIN N/F DISC SW MDSW	MIN DUAL ELEM FUSE	MAX DUAL ELEM FUSE MAX CB	SYSTEM # 1						SYSTEM # 2							
							COMPR 1		COMPR 2		FAN		COMPR 1		COMPR 2		FAN			
							RLA	LRA	RLA	LRA	QTY	FLA	LRA	RLA	LRA	RLA	LRA	QTY	FLA	LRA
0052	200	60	248	400	300	300	51.3	300	51.3	300	2	7.6	44.0	51.3	300	51.3	300	2	7.6	44.0
	230	60	248	400	300	300	51.3	300	51.3	300	2	7.4	19.1	51.3	300	51.3	300	2	7.4	19.1
	380	60	132	150	150	150	26.9	139	26.9	139	2	4.5	23.1	26.9	139	26.9	139	2	4.5	23.1
	460	60	114	150	125	125	23.1	150	23.1	150	2	4.0	19.0	23.1	150	23.1	150	2	4.0	19.0
	575	60	96	150	110	110	19.9	109	19.9	109	2	2.9	15.3	19.9	109	19.9	109	2	2.9	15.3
	400	50	106	150	125	125	21.8	140	21.8	140	2	3.4	17.5	21.8	140	21.8	140	2	3.4	17.5
0056	200	60	268	400	300	300	55.8	425	55.8	425	2	7.6	44.0	55.8	425	55.8	425	2	7.6	44.0
	230	60	267	400	300	300	55.8	425	55.8	425	2	7.4	19.1	55.8	425	55.8	425	2	7.4	19.1
	380	60	171	200	200	200	36.0	239	36.0	239	2	4.5	23.1	36.0	239	36.0	239	2	4.5	23.1
	460	60	130	150	150	150	26.9	187	26.9	187	2	4.0	19.0	26.9	187	26.9	187	2	4.0	19.0
	575	60	112	150	125	125	23.7	148	23.7	148	2	2.9	15.3	23.7	148	23.7	148	2	2.9	15.3
	400	50	114	150	125	125	23.7	198	23.7	198	2	3.4	17.5	23.7	198	23.7	198	2	3.4	17.5
0066	200	60	324	400	350	400	76.9	505	76.9	505	2	7.6	30.9	59.9	425	59.9	425	2	7.6	30.9
	230	60	301	400	350	350	71.2	505	71.2	505	2	7.4	37.0	55.5	425	55.5	425	2	7.4	37.0
	380	60	175	200	200	200	41.1	280	41.1	280	2	4.5	22.3	32.0	239	32.0	239	2	4.5	22.3
	460	60	143	200	175	175	33.9	225	33.9	225	2	3.4	17.2	26.4	187	26.4	187	2	3.4	17.2
	575	60	115	150	125	125	27.1	180	27.1	180	2	2.9	14.6	21.1	148	21.1	148	2	2.9	14.6
	400	50	146	200	175	175	33.9	225	33.9	225	2	4.0	19.0	26.4	198	26.4	198	2	4.0	19.0

See Notes on page 86.