

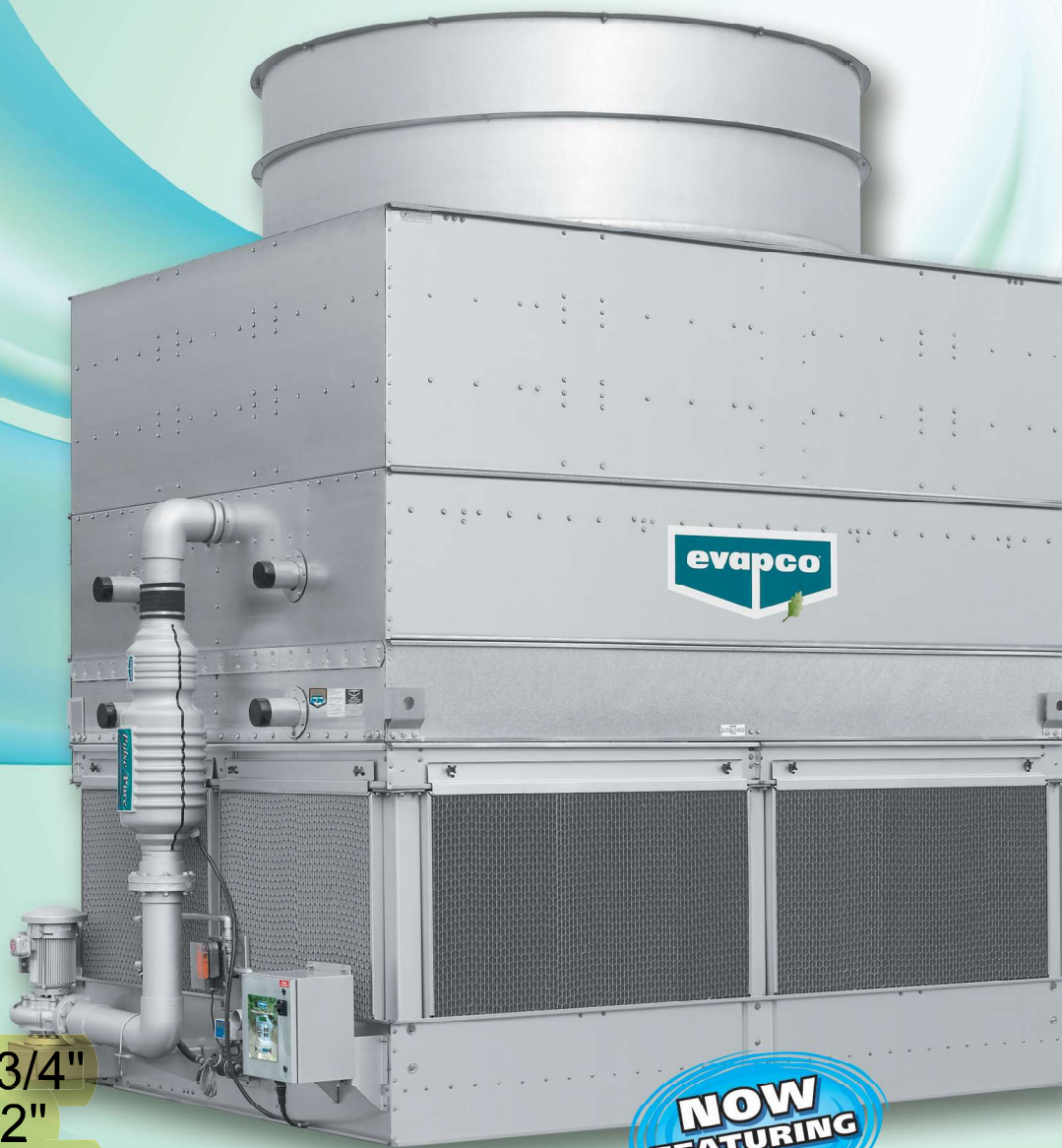
CLOSED CIRCUIT COOLERS

Model #: ATWB9-5M14-Z

2014
150 Tons

ATWB

The Industry's Smartest Induced Draft, Closed Circuit Coolers



L: 13' 11 3/4"
W: 8' 5 1/2"
H: 12' 10 3/4"

Operating Weight: 22,790 lbs
Shipping Weight: 15,170 lbs

**NOW
FEATURING**

CROSSCOOL™
INTERNALLY ENHANCED
COIL TECHNOLOGY



for LIFE

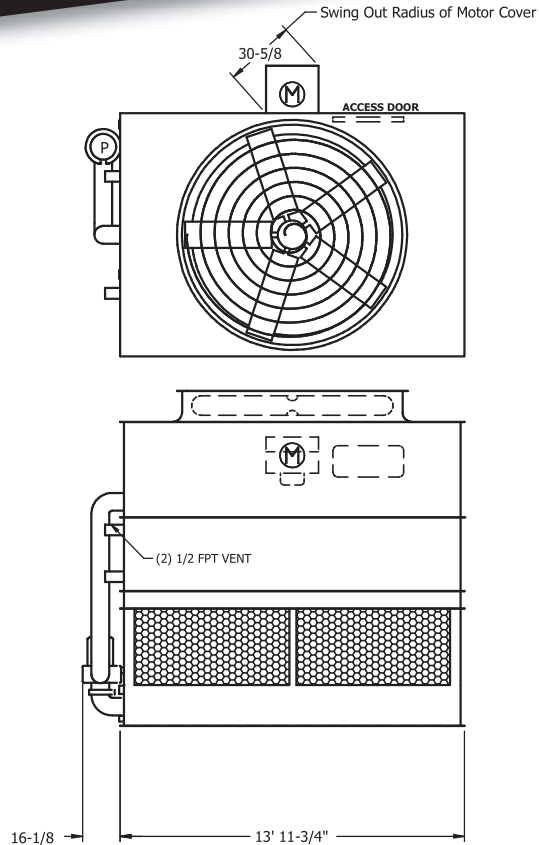
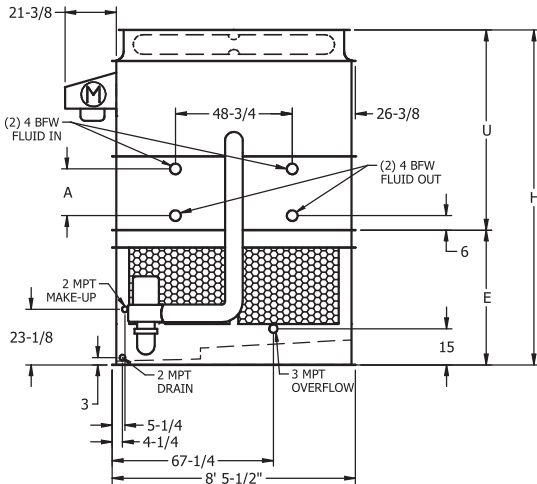


† Mark owned by the Cooling Technology Institute

Models: ATWB 9-3114 to 9-7M14

Closed Circuit Coolers

Selections for ATWB Closed Circuit Coolers are available from EVAPCO's evapSelect® Equipment Selection Program. Please contact your local sales representative for more information on the evapSelect® program.



Note: The number of coil connections doubles when the flow rate exceeds 900 GPM on ATWB 9x14 models. This required option is referred to as the High Flow coil configuration.

ATWB Model Number†	Weights (lbs)			Fans		Spray Pump		Coil Volume (Gallons)	Remote Sump Δ			Dimensions ▲			
	Shipping	Heaviest Section††	Operating	HP	CFM	HP	GPM		Gallons*‡	Conn. Size	Operating Weight (lbs)	Coil A	Upper U	Lower E	Height H
ATWB 9-3114	11,240	9,230	17,550	10	55,780	3	600	250	380	10"	15,590	19-1/2"	6' 11-1/2"	4' 8-1/4"	11' 7-3/4"
ATWB 9-3J14	11,370	9,360	17,680	15	63,850	3	600	250	380	10"	15,720	19-1/2"	6' 11-1/2"	4' 8-1/4"	11' 7-3/4"
ATWB 9-3K14	11,430	9,420	17,740	20	69,640	3	600	250	380	10"	15,780	19-1/2"	6' 11-1/2"	4' 8-1/4"	11' 7-3/4"
ATWB 9-3L14	11,460	9,450	17,770	25	74,130	3	600	250	380	10"	15,810	19-1/2"	6' 11-1/2"	4' 8-1/4"	11' 7-3/4"
ATWB 9-4J14	13,190	11,180	20,160	15	61,990	3	600	329	380	10"	18,200	27"	7' 7"	4' 8-1/4"	12' 3-1/4"
ATWB 9-4K14	13,250	11,240	20,220	20	67,620	3	600	329	380	10"	18,260	27"	7' 7"	4' 8-1/4"	12' 3-1/4"
ATWB 9-4L14	13,280	11,270	20,250	25	71,970	3	600	329	380	10"	18,290	27"	7' 7"	4' 8-1/4"	12' 3-1/4"
ATWB 9-4M14	13,330	11,320	20,300	30	75,740	3	600	329	380	10"	18,340	27"	7' 7"	4' 8-1/4"	12' 3-1/4"
ATWB 9-5J14	15,030	13,020	22,650	15	60,130	3	600	407	380	10"	20,690	34-1/2"	8' 2-1/2"	4' 8-1/4"	12' 10-3/4"
ATWB 9-5K14	15,090	13,080	22,710	20	65,590	3	600	407	380	10"	20,750	34-1/2"	8' 2-1/2"	4' 8-1/4"	12' 10-3/4"
ATWB 9-5L14	15,120	13,110	22,740	25	69,820	3	600	407	380	10"	20,780	34-1/2"	8' 2-1/2"	4' 8-1/4"	12' 10-3/4"
ATWB 9-5M14	15,170	13,160	22,790	30	73,470	3	600	407	380	10"	20,830	34-1/2"	8' 2-1/2"	4' 8-1/4"	12' 10-3/4"
ATWB 9-6K14	16,990	14,980	25,270	20	63,560	3	600	486	380	10"	23,310	42"	8' 10"	4' 8-1/4"	13' 6-1/4"
ATWB 9-6L14	17,020	15,010	25,300	25	67,660	3	600	486	380	10"	23,340	42"	8' 10"	4' 8-1/4"	13' 6-1/4"
ATWB 9-6M14	17,070	15,060	25,350	30	71,200	3	600	486	380	10"	23,390	42"	8' 10"	4' 8-1/4"	13' 6-1/4"
ATWB 9-7K14	19,250	17,240	28,190	20	61,530	3	600	565	380	10"	26,230	47-3/4"	9' 3-3/4"	4' 8-1/4"	14' 0"
ATWB 9-7L14	19,280	17,270	28,220	25	65,500	3	600	565	380	10"	26,260	47-3/4"	9' 3-3/4"	4' 8-1/4"	14' 0"
ATWB 9-7M14	19,330	17,320	28,270	30	68,930	3	600	565	380	10"	26,310	47-3/4"	9' 3-3/4"	4' 8-1/4"	14' 0"

† Model Numbers end in "-Z" for units with Series Flow piping configuration. Series Flow units may require additional coil connections and will require crossover piping. Model numbers will include "C" for units with Stainless Steel coil(s), "R" for units with Low Sound Fan(s) and "S" for units with an option that negates CTI certification.

†† Heaviest section is the coil/fan section.

* Gallons shown is water in suspension in unit and piping. Allow for additional water in bottom of remote sump to cover pump suction and strainer during operation (12" would normally be sufficient).

Δ When a remote sump arrangement is selected, the spray pump, suction strainer and associated piping are omitted; the unit is provided with an oversized outlet to facilitate drainage to the remote sump.

▲ Unit dimensions and coil connections may vary slightly from catalog. See factory certified prints for dimensions, quantity of coil connections, and piping configuration. Coil connections are 4" bevel for weld (BFW). Other connection types such as grooved for mechanical coupling or flanged are also available as options.