

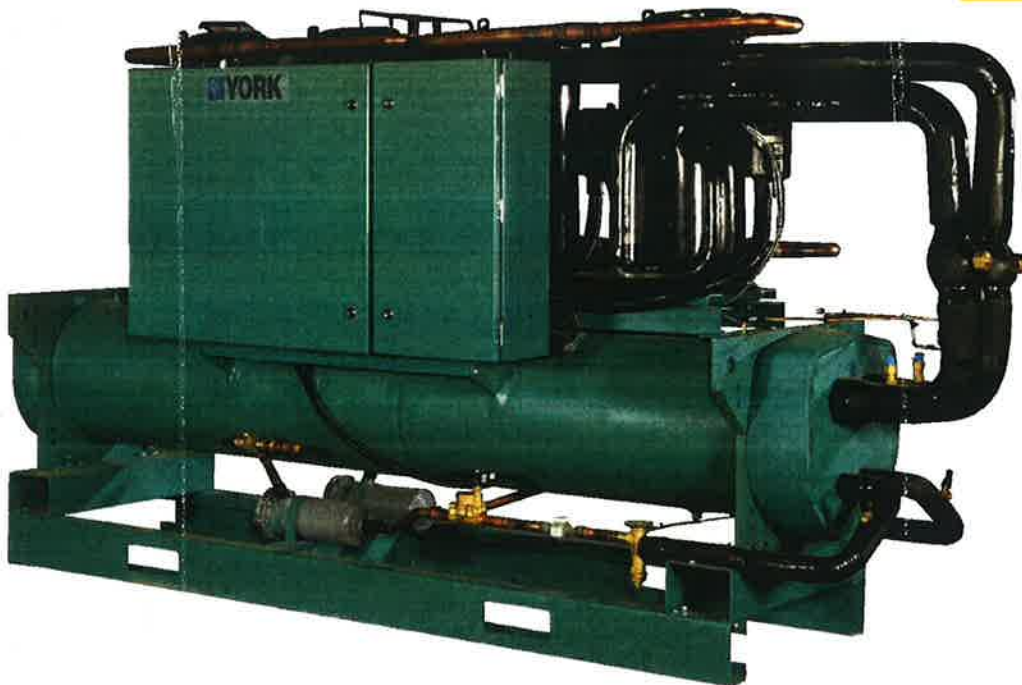
MODEL YCRL REMOTE CONDENSER SCROLL LIQUID CHILLER STYLE A

50 Through 170 Tons
175 Through 597 Kw
60Hz
R-410a

Model #: YCRL0177SE46XABBXTXXXXLXXXX45S1XXXXXXXXSAXXXXXBX2XX1PXXXXX
Serial #: 11531C53563282

L: 11' 9"
H: 5' 5"
W: 3' 2"

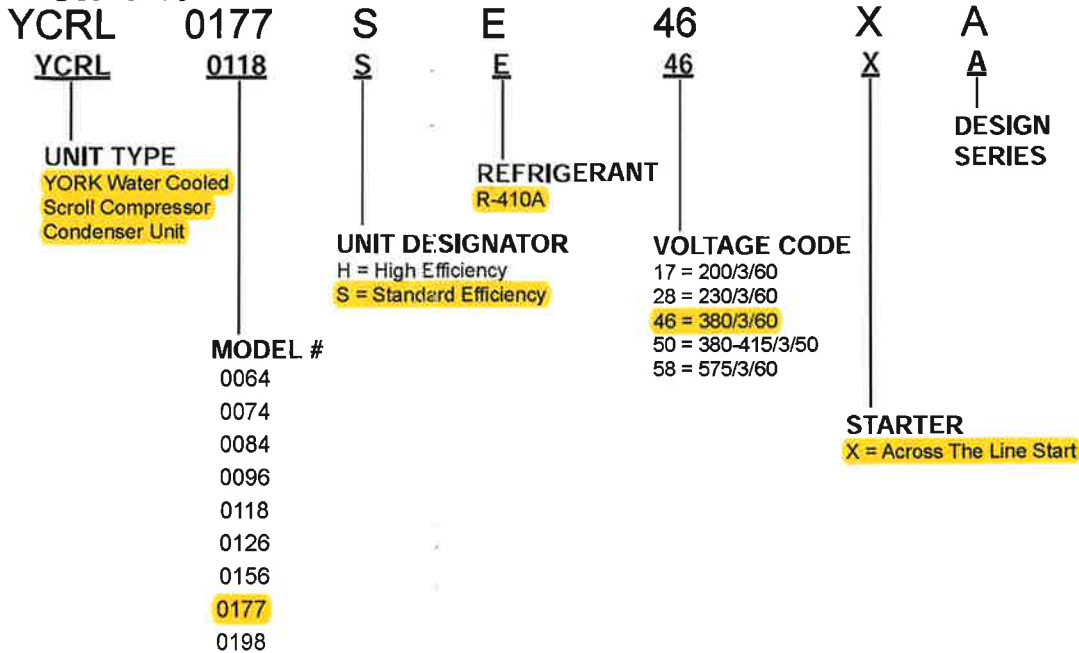
Shipping Weight: 4,418 lbs
Operating Weight: 4,868 lbs



 **YORK**[®]

BY JOHNSON CONTROLS

Nomenclature



Performance data provided in this document was created in accordance with Johnson Controls software: YORKworks version 15.01 and DXCHILL version 6.16.

Approvals

- ASME Boiler and Pressure Vessel Code –Section VIII Division 1
- AHRI Standard 550/590
- c/U.L. – Underwriters Laboratory
- ASHRAE 15 – Safety Code for Mechanical Refrigeration
- ASHRAE Guideline 3 – Reducing Emission of Halogenated Refrigerants in Refrigeration and Air Conditioning Equipment and Systems
- N.E.C. – National Electrical Code
- OSHA – Occupational Safety and Health Act

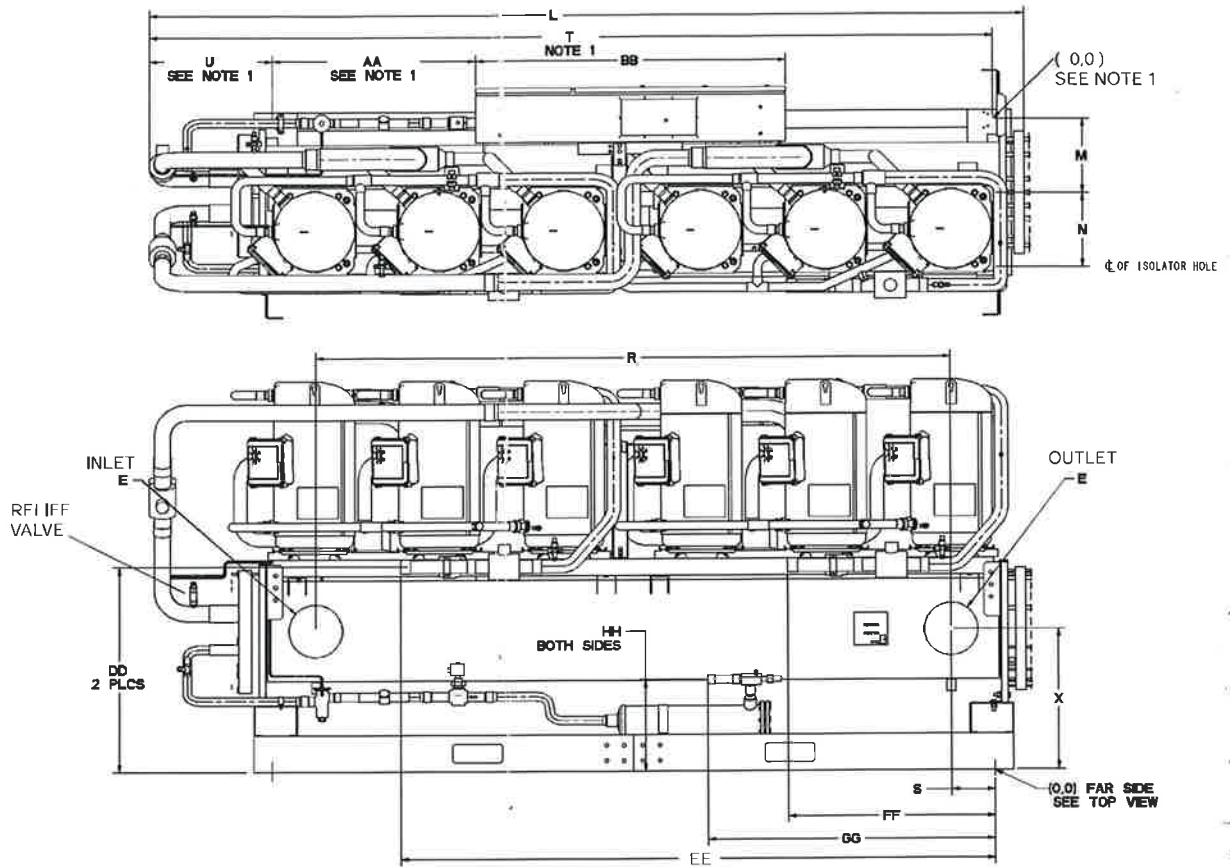


Products are produced at a facility whose quality-management systems are ISO9001 certified.

JOHNSON CONTROLS

Unit Dimensions (Cont'd)

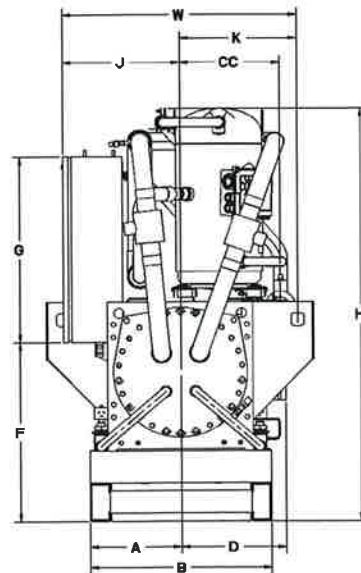
FIVE & SIX COMPRESSOR



LD18638

NOTES:

1. Recommended service clearances.
 Rear to wall: 20" (508mm)
 Front to wall: 36" (915mm)
 Top: 43" (1092mm)
 Tube cleaning and removal: 132" (3353mm) either end
2. Relief valve connection sizes.
 Low side (suction line): 1/2" flare



Unit Dimensions (Cont'd)**FIVE & SIX COMPRESSOR**

VCRL	0096HE	0126HE	0156HE	0177SE	0198SE
W	38.0	38.0	38.0	38.0	38.0
H	59.1	64.6	64.5	64.5	64.5
L	140.6	142.6	140.8	140.8	140.8
A	13.8	13.8	13.8	13.8	13.8
B	27.5	27.5	27.5	27.5	27.5
D	16.0	16.0	16.0	16.0	16.0
E	8.6	8.6	8.6	8.6	8.6
F	28.0	28.0	28.0	28.0	28.0
G	29.0	29.0	29.0	29.0	29.0
J	17.7	17.7	17.7	17.7	17.7
K	17.8	17.8	15.3	15.3	15.3
M	12.3	12.3	12.3	12.3	12.3
N	12.3	12.3	12.3	12.3	12.3
R	102.0	102.0	102.0	102.0	102.0
S	7.0	7.0	7.0	7.0	7.0
T	135.8	137.6	135.8	135.8	135.8
U	19.8	21.6	19.8	19.8	19.8
X	23.3	23.3	23.2	23.2	23.2
AA	32.8	32.8	32.8	32.8	32.8
BB	50.0	50.0	50.0	50.0	50.0
CC	15.0	15.3	17.8	17.8	17.8
DD	33.3	33.8	33.8	33.8	33.8
EE	94.2	95.4	95.4	95.4	95.4
FF	32.0	33.2	33.2	33.2	33.2
GG-1	57.9	57.7	53.7	53.7	53.7
GG-2	57.9	57.7	53.7	53.7	53.7
HH	14.7	14.9	14.9	14.9	14.9

H* - for 200/230 volt units, which require a larger electrical enclosure

Physical Data – High Efficiency

YCRL	0064HE	0074HE	0084HE	0096HE	0118HE	0126HE	0156HE	0177SE	0198SE
GENERAL UNIT DATA									
NOMINAL UNIT CAPACITY (TONS)	55.7	64.6	73.0	85.1	101.7	110.5	129.7	146.1	176.0
NUMBER OF INDEPENDENT REFRIGERANT CIRCUITS	2	2	2	2	2	2	2	2	2
OIL CHARGE, CKT. 1/CKT. 2, (GAL.)	2.2/2.2	2.5/2.2	2.5/2.5	3.3/3.3	3.3/3.1	3.7/3.7	4.7/4.7	4.7/4.7	4.7/4.7
SHIPPING WEIGHT (LBS.)	2883	3261	3439	3753	3705	4587	4939	4418	4773
OPERATING WEIGHT (LBS.)	2973	3531	3709	4043	3975	5037	5439	4868	5223
COMPRESSORS, SCROLL									
QUANTITY PER CHILLER	4	4	4	6	4	6	6	5	6
NOMINAL SIZE CKT. 1/ CKT. 2	15-15/ 15-15	20-20 / 15-15	20-20/ 20-20	15-15- 15/ 15-15-15	32-32/ 25-25	20-20- 20/ 20-20-20	25-25- 25/ 25-25-25	32-32- 32/ 32-32	32-32- 32/ 32-32-32
EVAPORATOR									
WATER VOLUME (GALS.)	37.3	59.8	59.8	57.6	59.8	77	77	77	77
MAXIMUM WATER SIDE PRESSURE (PSIG)	150	150	150	150	150	150	150	150	150
MAXIMUM REFRIGERANT SIDE PRESSURE (PSIG)	450	450	450	450	450	450	450	450	450
DIA. X LENGTH (INCHES X FEET)	13" X 8'	16" X 8'	16" X 8'	15" X 10'	16" X 8'	17" 10'	17" 10'	17" 10'	17" 10'
WATER NOZZLE CONNECTION SIZE, (IN.)	6	8	8	8	8	8	8	8	8