

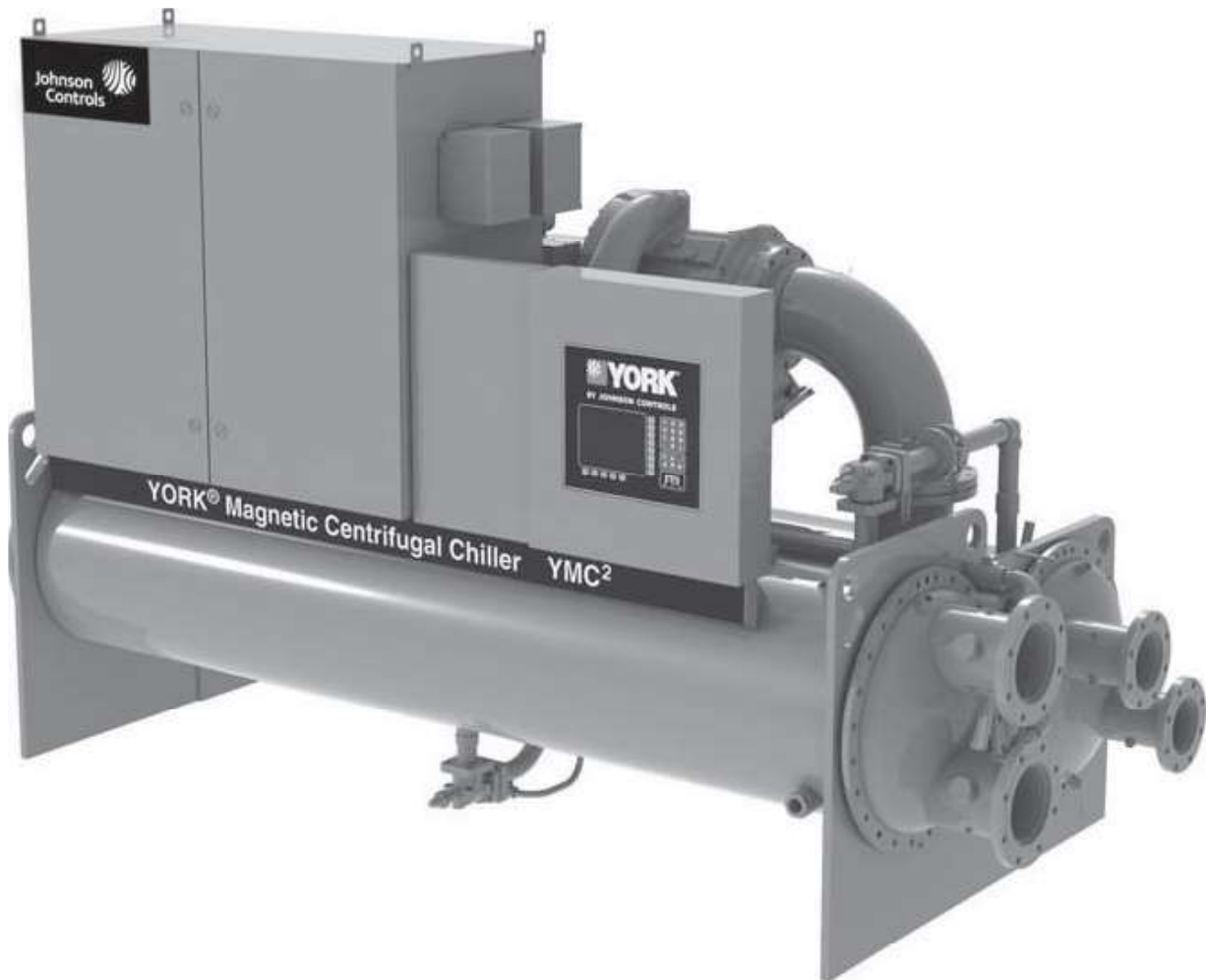
Model #: YCM2-S0879AA  
Serial #: SBXM-818480

FORM 160.78-EG1 (811)

2011  
250 Tons



BY JOHNSON CONTROLS

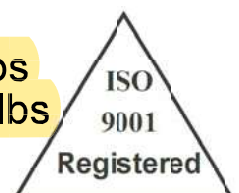


***Model YMC<sup>2</sup> Magnetic Bearing Centrifugal Liquid Chillers  
Design Level A***

L: 12' 7"  
W: 5' 9"  
H: 7' 8"

Shipping Weight: 13,578 lbs  
Operating Weight: 15,359 lbs

215 THROUGH 380 TONS  
(755 through 1340 kW)  
Utilizing HFC-134a



Products are produced at a facility whose quality-management systems are ISO9001 certified.

## Unit Nomenclature

Position:	1,2,3,4	-	5	6,7,8,9	10	11	
	YMC2	S	0879	A	A		Chiller Model
		S					Single Stage Compressor
			###				Capacity in KW
				A			Refrigerant HFC R-134a
					A		Mod Level

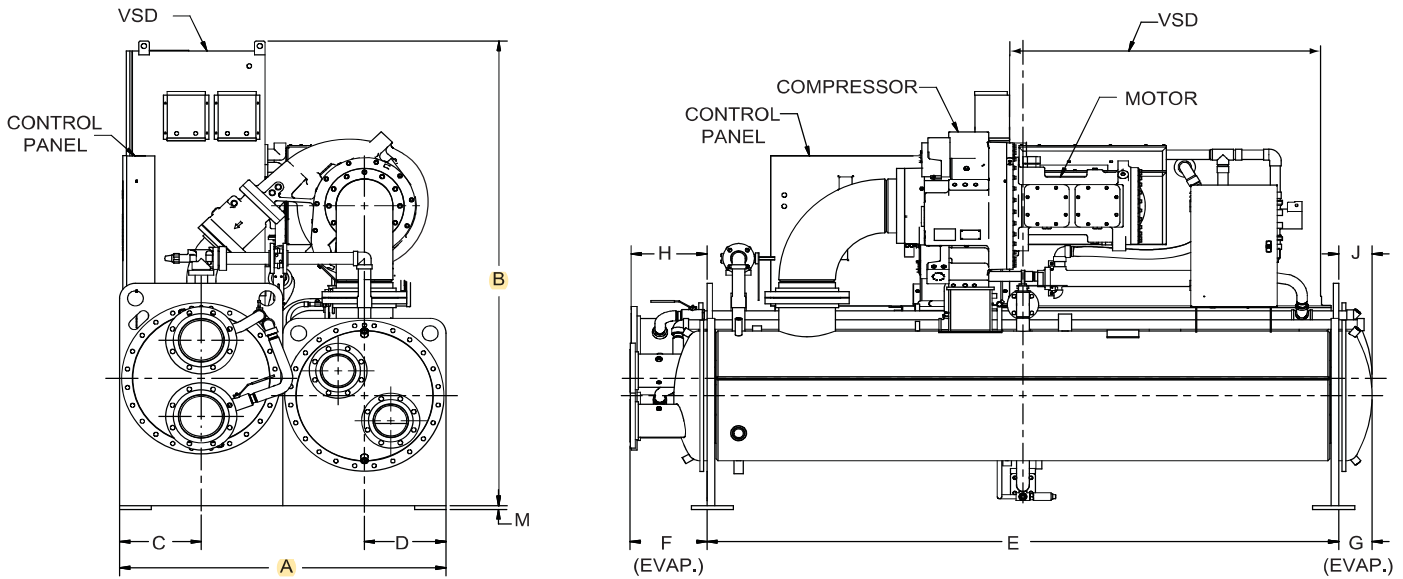
## Compressor Nomenclature

Position:	1,2	3	-	4	5	6	7	8	9
	M1	B	-	2	0	5	F	A	A
		B							
			###						
				F					
					A				
						B			

### Heat Exchanger Nomenclature

Position:	1	2	3,4	5,6	-	7	8	9	-	10	11	12	-	13	14	15	16	
	E	A	25	10	-	3	2	1	-	B	S	1	-	2	G	M	L	Evaporator
	C	A	25	10	-	2	6	0	-	E	S	1	-	2	G	M	L	Condenser
	A																	Heat Exchanger Mod Level
		XX																Nominal Inside Diameter in inches
			YY															Nominal Length in feet
						#	#	#										Tube Number
										B								3/4" Tube count code 1
										C								3/4" Tube count code 2
										D								3/4" Tube count code 3
										E								3/4" Tube count code 4
										2								1" Tube count code 1
										3								1" Tube count code 2
										4								1" Tube count code 3
										5								1" Tube count code 4
											S							Vessel Refrigerant Side Pressure Code, 235
												1						Water Side Pressure Code, 150 psi
												3						Water Side Pressure Code, 300 psi
													#					Number of passes
															G			Water connection type, Grooved, Standard
															F			Water connection type, Flanged
																C		Water box type, compact
																M		Water box type, Marine
																	R	Inlet on Right (when viewing control panel)
																	L	Inlet on Left (when viewing control panel)

# Dimensions (Ft. - In.) - Unit



### ADDITIONAL OPERATING HEIGHT CLEARANCE TO FLOOR

TYPE OF CHILLER MOUNTING	M
NEOPRENE PAD ISOLATORS	1-3/4"
SPRING ISOLATORS 1" DEFLECTION	1"
DIRECT MOUNT	3/4"

EVAPORATOR CODE	CONDENSER CODE	DIMENSIONS (FT-IN)				
		A	B	C	D	E
EA2510	CA2110	5'-5"	7'-4"	1'-3-1/2"	1'-3-1/2"	10'-0"
EA2510	CA2510	5'-5"	7'-9"	1'-3-1/2"	1'-3-1/2"	10'-0"
EA2514	CA2514	5'-5"	7'-9"	1'-3-1/2"	1'-3-1/2"	14'-0"

**NOTES:**

- All dimensions are approximate. Certified dimensions are available on request.
- Standard water nozzles are Schedule 40 pipe size, furnished as welding stub-outs with ANSI/AWWA C-606 grooves, allowing the option of welding, flanges, or use of ANSI/AWWA C-606 couplings. Factory-installed, class 150 (ANSI B16.5, round slip-on forged carbon steel with 1/16" raised face), water flanged nozzles are optional (add 1/2" to nozzle length). Companion flanges, nuts, bolts, and gaskets are not furnished.
- One, two, and three-pass nozzle arrangements are available only in pairs shown for all shell codes. Any pair of evaporator nozzles may be used in combination with any pair of condenser nozzles. Compact water boxes on one heat exchanger may be used with Marine Water Boxes on the other heat exchangers.
- Condenser water must enter the water box through the bottom connection for proper operation of the sub-cooler to achieve rated performance.
- To determine overall height, add dimension "M" for the appropriate isolator type.

# Weights - English

**TABLE 4 – APPROXIMATE UNIT WEIGHT\* (MAX TUBE COUNT USING 150 PSI COMPACT WATERBOXES)**

COMPRESSOR	EVAP	COND	EST REF CHRGR	SHIPPING WEIGHT	OPERATING WEIGHT
M1-197FAB	EA2510	CA2110	555	11770	12740
	EA2510	CA2510	610	12790	14070
	EA2514	CA2514	860	14970	16620
M1-205FAB	EA2510	CA2110	555	11790	12760
	EA2510	CA2510	610	12810	14090
	EA2514	CA2514	860	14990	16630

1. REFRIGERANT CHARGE QUANTITY AND WEIGHTS WILL VARY BASED ON TUBE COUNT.

2. SHIPPING WEIGHT BASED ON FORM 1 SHIPMENT

\* REFER TO PRODUCT DRAWINGS FOR DETAILED WEIGHT INFORMATION

**TABLE 5 – EVAPORATOR MARINE WATER BOX WEIGHTS (TO BE ADDED TO STANDARD UNIT WEIGHTS SHOWN ON TABLE 4)**

EVAPORATOR	SHIPPING WEIGHT INCREASE (LBS)			OPERATING WEIGHT INCREASE (LBS)		
	1-PASS	2-PASS	3-PASS	1-PASS	2-PASS	3-PASS
EA2510	702	365	737	1192	561	1130
EA2514	702	365	737	1192	561	1130

**TABLE 6 – CONDENSER MARINE WATER BOX WEIGHTS (TO BE ADDED TO STANDARD UNIT WEIGHTS SHOWN ON TABLE 4)**

CONDENSER	SHIPPING WEIGHT INCREASE (LBS)			OPERATING WEIGHT INCREASE (LBS)		
	1-PASS	2-PASS	3-PASS	1-PASS	2-PASS	3-PASS
CA2110	557	269	551	996	413	843
CA2510	797	403	805	1453	708	1400
CA2514	797	403	805	1453	708	1400