

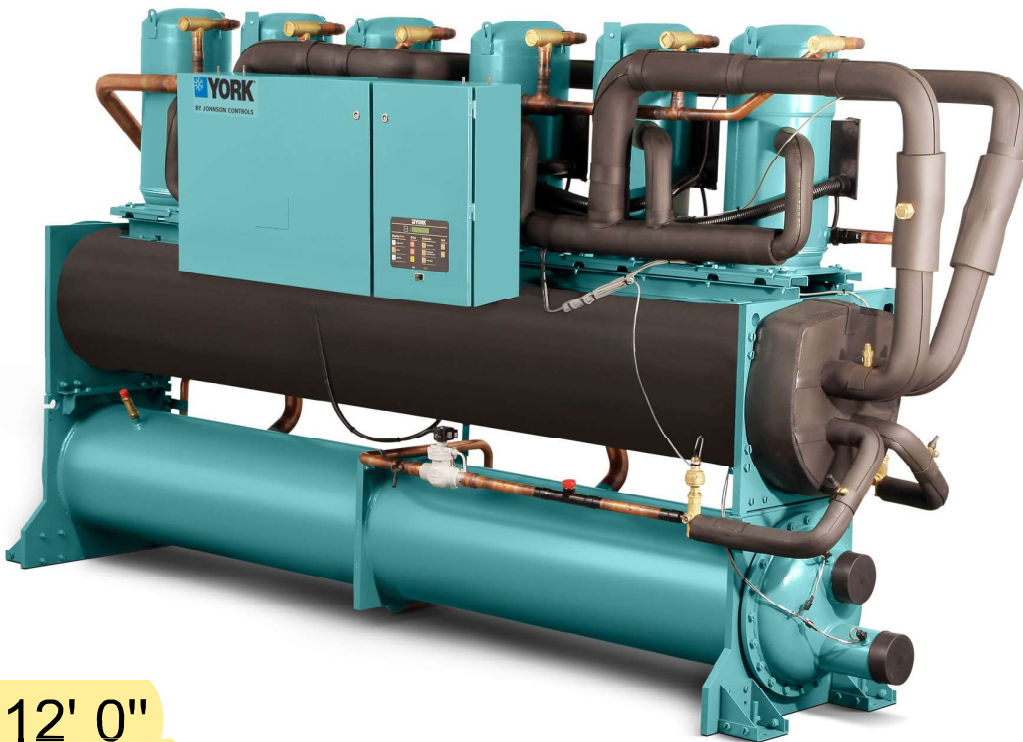
Model YCWL Water-Cooled Scroll Liquid Chiller

Style A

50 THROUGH 200 TONS
175kW THROUGH 700 kW
60Hz

Model #: YCWL0157HE17XAASDTXXXXLXXXX44SX1XEXXXXXSAXXXXXXXXXXXXXNBXAXXX
Serial #: SGAM-733700

2013
148 Tons



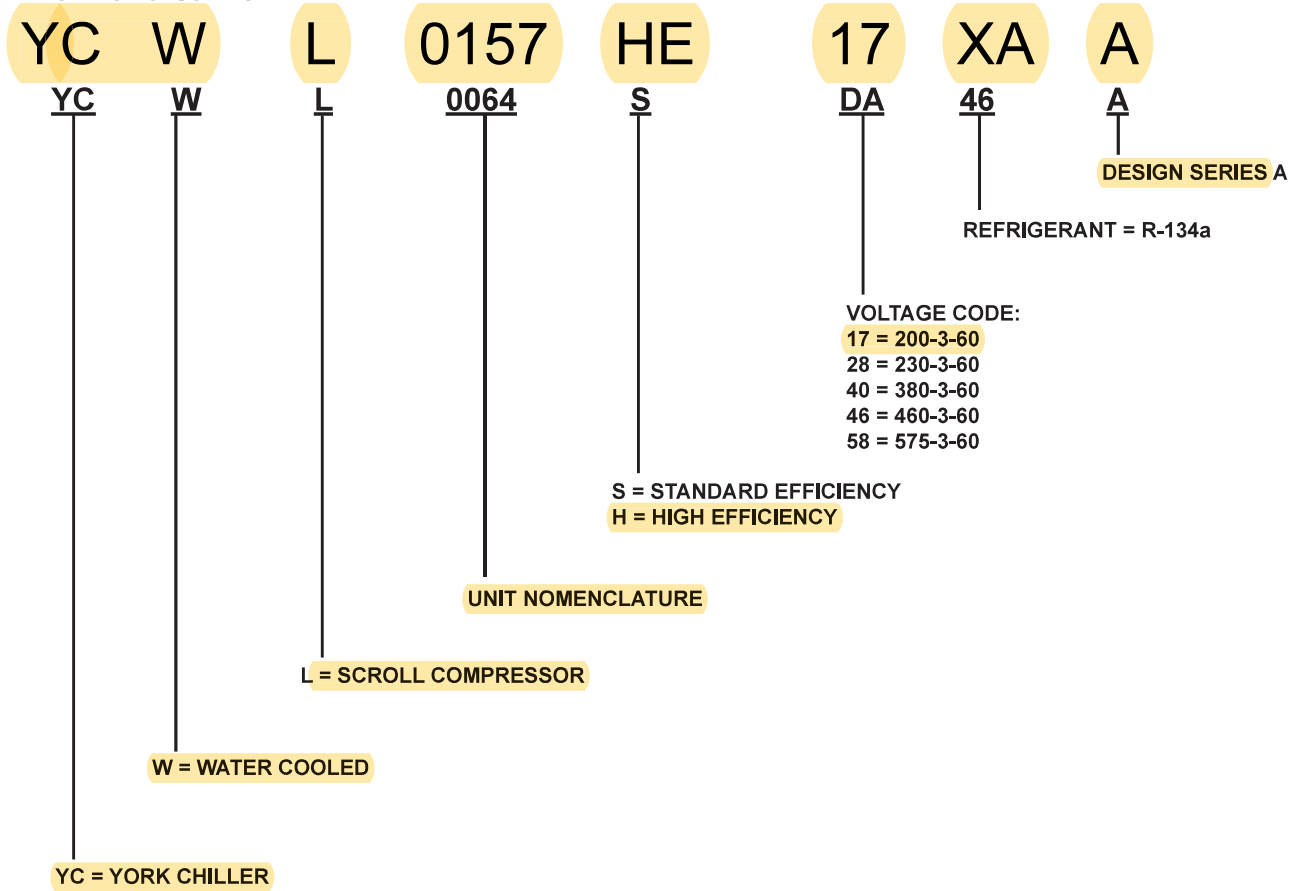
L: 12' 0"
W: 2' 11"
H: 6' 6"

Shipping Weight: 6,863 lbs
Operating Weight: 7,807 lbs



BY JOHNSON CONTROLS

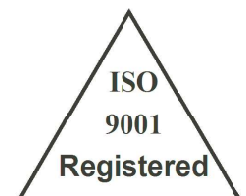
Nomenclature



PERFORMANCE DATA PROVIDED IN THIS DOCUMENT WAS CREATED IN ACCORDANCE WITH JOHNSON CONTROLS SOFTWARE: YORKWORKS VERSION 14.03 AND DXCHILL VERSION 6.13

Approvals

- ASME Boiler and Pressure Vessel Code –Section VIII Division 1.
- AHRI Standard 550/590 and 551/591
- c/U.L. – Underwriters Laboratory
- ASHRAE 15 – Safety Code for Mechanical Refrigeration
- ASHRAE Guideline 3 – Reducing Emission of Halogenated Refrigerants in Refrigeration and Air Conditioning Equipment and Systems
- N.E.C. – National Electrical Code
- OSHA – Occupational Safety and Health Act



Products are produced at a facility whose quality-management systems are ISO9001 certified.

JOHNSON CONTROLS

HIGH EFFICIENCY (HE)

YCWL	0064HE	0074HE	0084HE	0094HE	0096HE	0118HE	0127HE	0157HE
------	--------	--------	--------	--------	--------	--------	--------	--------

GENERAL UNIT DATA

NOMINAL UNIT CAPACITY (TONS)	63.2	73	82.4	92.6	95.8	117.2	132.1	148.5
NUMBER OF INDEPENDENT REFRIGERANT CIRCUITS	2	2	2	2	2	2	2	2
REFRIGERANT CHARGE, R-410A, CKT 1/CKT. 2 (LBS.)	65/65	90/90	90/90	155/155	170/170	155/155	180/180	195/195
OIL CHARGE, CKT. 1/CKT. 2, (GAL.)	2.2/2.2	2.5/2.2	2.5/2.5	3.1/2.5	3.3/3.3	3.3/3.1	3.7/3.7	4.7/4.7
SHIPPING WEIGHT (LBS.)	4373	4835	5097	5669	6013	5905	7087	6863
OPERATING WEIGHT (LBS.)	4688	5330	5592	6308	6741	6544	7975	7807

COMPRESSORS, SCROLL

QUANTITY PER CHILLER	4	4	4	4	6	4	5	4
NOMINAL SIZE CKT. 1/ CKT. 2	15-15/15-15	20-20/15-15	20-20/20-20	25-25/20-20	15-15-15/ 15-15-15	32-32/25-25	20-20-20/ 32-32	35-35/ 35-35

CONDENSER

WATER VOLUME (GAL.)	26.9	26.9	26.9	44.1	52.4	44.1	52.4	59.1
MAXIMUM WATER SIDE PRESSURE (PSIG)	150	150	150	150	150	150	150	150
MAXIMUM REFRIGERANT SIDE PRESSURE (PSIG)	560	560	560	560	560	560	560	560
DIA. X LENGTH (INCHES X FEET)	14" X 8'	14" X 8'	14" X 8'	18" X 8'	18" X 10'	18" X 8'	18" X 10'	18" X 10'
WATER NOZZLE CONNECTION SIZE, (INCHES)	4	4	4	5	5	5	5	5

EVAPORATOR

WATER VOLUME (GALS.)	37.3	59.8	59.8	59.8	57.6	59.8	77	77
MAXIMUM WATER SIDE PRESSURE (PSIG)	150	150	150	150	150	150	150	150
MAXIMUM REFRIGERANT SIDE PRESSURE (PSIG)	450	450	450	450	450	450	450	450
DIA. X LENGTH (INCHES X FEET)	13" X 8'	16" X 8'	16" X 8'	16" X 8'	15" X 10'	16" X 8'	17" X 10'	17" X 10'
WATER NOZZLE CONNECTION SIZE, (INCHES)	6	8	8	8	8	8	8	8

Unit Dimensions - English - Four Compressor

STANDARD EFFICIENCY (SE)									
YCWL	0056SE	0064SE	0074SE	0084SE	0094SE	0104SE	0118SE	0132SE	0157SE
W	34 5/8	34 5/8	33 13/16	33 13/16	33 13/16	33 13/16	33 13/16	33 13/16	34 13/16
H	64 15/32	64 15/32	68 29/32	68 29/32	72 9/32	71 25/32	71 25/32	74 1/2	76 17/32
H*	–	–	70 1/2	70 1/2	–	73 1/2	73 1/2	–	–
H**	–	–	70 1/2	70 1/2	–	73 1/2	75	75	–
L	119 5/8	119 5/8	125 15/16	125 15/16	125 15/16	124 1/8	124 1/8	123 5/16	143 7/16
A	14 1/2	14 1/2	14 1/2	14 1/2	14 1/2	14 1/2	14 1/2	14 1/2	15
B	29	29	29	29	29	29	29	29	30
C	4 1/2	4 1/2	4 1/2	4 1/2	4 1/2	4 1/2	4 1/2	5 9/16	5 9/16
D	15 17/32	15 17/32	15 17/32	15 17/32	11 25/32	15 17/32	15 17/32	16 1/32	16 1/32
E	6 5/8	6 5/8	6 5/8	6 5/8	6 5/8	6 5/8	6 5/8	8 5/8	8 5/8
F	35 15/32	35 15/32	35 15/32	35 15/32	35 15/32	38 1/2	38 1/2	40	41
G	29	29	29	29	29	29	29	29	29
J	17 11/16	17 11/16	17 11/16	17 11/16	17 11/16	17 11/16	17 11/16	17 11/16	17 11/16
K	8 15/16	8 15/16	8 15/16	8 15/16	12 1/4	12 1/4	12 1/4	12 3/4	17 25/32
M	9 7/8	9 7/8	9 7/8	9 7/8	9 7/8	9 7/8	9 7/8	9 7/8	10 3/8
N	9 7/8	9 7/8	9 7/8	9 7/8	9 7/8	9 7/8	9 7/8	9 7/8	10 3/8
O	5 1/2	5 1/2	5 1/2	7 1/8	7 1/8	7 1/8	7 1/8	8 1/8	8 5/8
P	9 1/8	9 1/8	9 1/8	8 3/8	8 3/8	8 3/8	8 3/8	7 7/8	8 1/2
Q	5 1/8	5 1/8	5 1/8	5 1/8	5 1/8	5 1/8	5 1/8	5 7/32	5 3/16
R	84 1/2	84 1/2	84 1/2	84 1/2	85	85	85	83	102
S	8 21/32	8 21/32	8 21/32	8 21/32	8 13/32	8 13/32	8 13/32	9 13/32	11 29/32
T	101 13/16	101 13/16	101 13/16	101 13/16	101 13/16	101 13/16	101 13/16	101 13/16	125 13/16
U	15 1/16	15 1/16	21 3/8	21 3/8	21 3/8	19 9/16	19 9/16	18 3/4	14 7/8
V	107 25/32	107 25/32	107 25/32	107 25/32	107 25/32	107 25/32	107 25/32	108 7/32	132 23/32
X	30 3/8	30 3/8	30 3/8	30 3/8	32	32	32	33 1/4	36 1/4
AA	25 29/32	25 29/32	25 29/32	25 29/32	25 29/32	25 29/32	25 29/32	25 29/32	35 17/32
BB	50	50	50	50	50	50	50	50	50

HIGH EFFICIENCY (HE)						
YCWL	0064HE	0074HE	0084HE	0094HE	0118HE	0157HE
W	33 13/16	33 13/16	33 13/16	33 27/32	33 27/32	34 13/16
H	67 19/32	74 5/8	74 19/32	76 19/32	76 1/2	77 9/32
H*	–	75	75	–	77	–
H**	–	75	75	–	77	76
L	124 3/8	123 5/16	125 11/16	121 3/4	123 5/16	143 7/16
A	14 1/2	14 1/2	14 1/2	15	15	15
B	29	29	29	30	30	30
C	4 1/2	4 1/2	4 1/2	5 9/16	5 9/16	5 9/16
D	11 25/32	16 1/32	16 1/32	16 1/32	16 1/32	16 1/32
E	6 5/8	8 5/8	8 5/8	8 5/8	8 5/8	8 5/8
F	35 15/32	40	40	42	42	41
G	29	29	29	29	29	29
J	17 11/16	17 11/16	17 11/16	17 11/16	17 11/16	17 11/16
K	12 1/4	12 3/4	12 3/4	12 3/4	12 3/4	17 25/32
M	9 7/8	9 7/8	9 7/8	9 7/8	9 7/8	10 3/8
N	9 7/8	9 7/8	9 7/8	9 7/8	9 7/8	10 3/8
O	7 1/8	7 1/8	7 1/8	8 5/8	8 5/8	8 5/8
P	8 1/4	8 1/4	8 1/4	8 1/2	8 1/2	8 1/2
Q	5 1/8	5 1/8	5 1/8	5 3/16	5 3/16	5 3/16
R	85	83	83	83	83	102
S	8 13/32	9 13/32	9 13/32	9 13/32	9 13/32	11 29/32
T	101 13/16	101 13/16	101 13/16	101 13/16	101 13/16	125 13/16
U	19 13/16	18 3/4	21 1/8	17 3/16	18 3/4	14 7/8
V	107 25/32	107 25/32	107 25/32	108 3/4	108 3/4	132 23/32
X	32	33 1/4	33 1/4	35 1/4	35 1/4	36 1/4
AA	25 29/32	28 9/32	25 29/32	27 15/32	25 29/32	37 21/32
BB	50	50	50	50	50	50

H* - for 200/230 volt units, which require a larger electrical enclosure.

H** - for multiple point circuit breaker units, 200/230 volt, which require a larger electrical enclosure.

NOTES:

1. Recommended service clearances
 - Rear to wall: 20" (508mm)
 - Front to wall: 36" (915mm)
 - Top: 43" (1092mm)
 - Tube cleaning and removal: 132" (3353mm) either end
2. Relief valve connection sizes
 - Low side (suction line): 1/2" flare
 - High side (condenser): 5/8" NPTI

